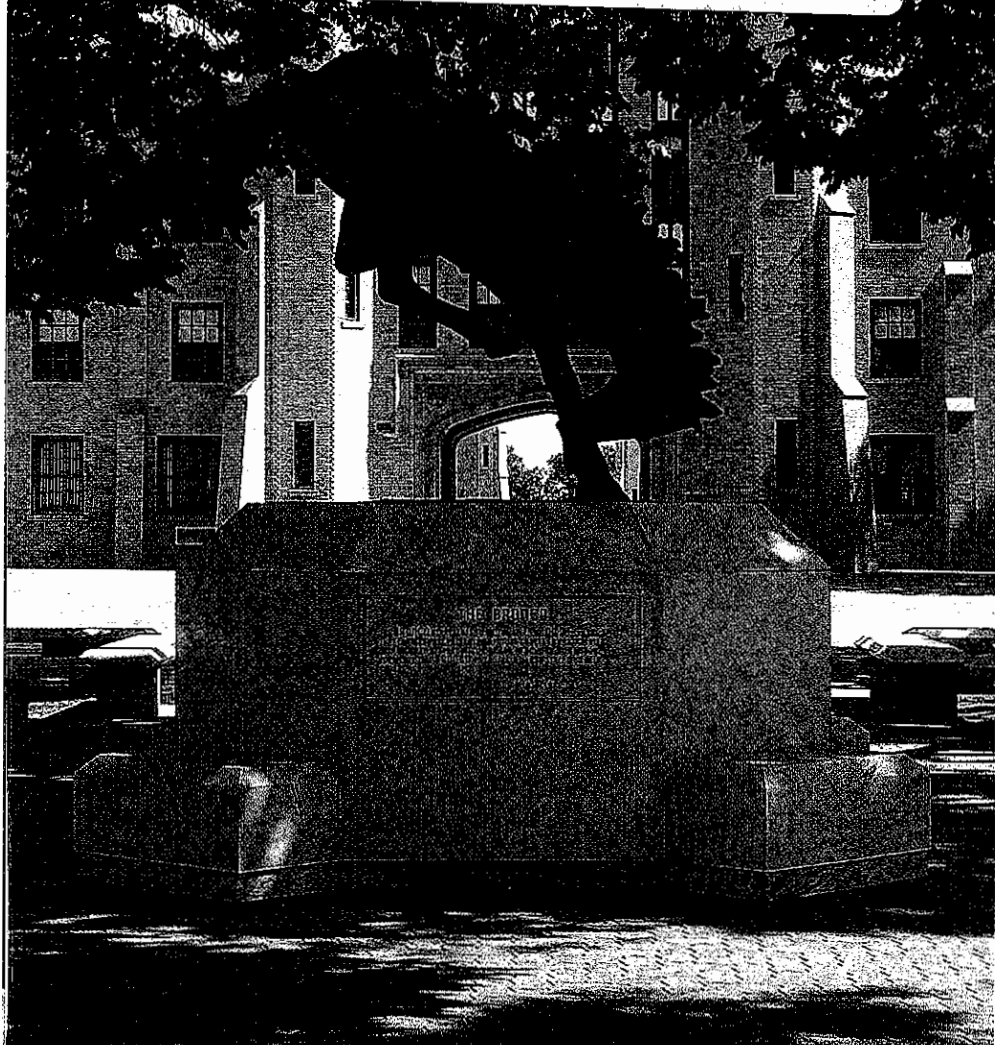


REGISTRAR Record Copy  
Do NOT REMOVE  
OFFICIAL NMMI RECORD



Catalog  
2006-2008  
New Mexico Military Institute  
Roswell, New Mexico



Catalog  
2006-2008  
New Mexico Military Institute  
Roswell, New Mexico

## COVER CREDITS:

Photograph:

Front, spine and rear design: LTC (NMMI) Wayne Whiting

## Change summary:

- a. Modified the Service Academy Preparatory Program
- b. Added NM General Education requirements
- c. Changed general education requirements to more closely reflect other institutions in New Mexico
- d. Added information on NM Common Course numbering
- e. Changed courses and course numbering
- f. Adjusted wording on AS Lab science requirement
- g. Adjusted procedures on high school correspondence transfer work
- h. Added the requirement for CAAP testing for junior college graduates
- i. Adjusted general requirements for junior college graduation
- Updates to many courses (course additions and descriptions)
- k. Faculty updates.

Current updates posted on the NMMI web site at <http://www.nmmi.edu/reg>

# TABLE OF CONTENTS

TABLE OF CONTENTS .....	3
SUPERINTENDENT'S MESSAGE .....	7
NEW MEXICO MILITARY INSTITUTE .....	8
Academic VISION .....	8
Academic MISSION .....	8
Equal Opportunity Policy .....	9
School Calendars (anticipated) .....	10
Key Personnel .....	12
Officers of the Institute .....	12
Accreditation .....	13
NMMI – A Historical Sketch .....	14
Academic Outcomes .....	15
NMMI Assessment Statement .....	15
Corps of Cadets .....	15
Troop Officers .....	17
NMMI Class Designations .....	18
Honor System .....	18
Furloughs .....	19
Services .....	19
Confidentiality of Student Records (FERPA) .....	19
Name Changes .....	20
Transcripts and transcript requests .....	20
Class Attendance .....	20
Class Drop-Add Procedures .....	20
Night Study Hall .....	21
Grades/Grading System .....	21
Residency and Residency Requirements .....	22
Course numbering system .....	22
Graduation Procedures .....	23
Academic Achievement Lists and Honor Societies .....	24
Superintendent's List .....	24
Dean's List .....	24
Commandant's List .....	24
Phi Theta Kappa (Junior College) .....	24
The National Honor Society (High School) .....	24
The National German Honor Society (High School) .....	25
US Academy Preparation (Prep) Program .....	25
Academic Suspension, Suspension, Withdrawal and/or Dismissal Policy .....	25
Academic Resources .....	27

J. Penrod Toles Learning Center . . . . .	27
Writing Center . . . . .	27
Franklin Student Assistance Center . . . . .	27
Academic Advising and College Placement . . . . .	28
Cadet Counseling Center . . . . .	29
ACT/SAT Program . . . . .	30
<b>FINANCIAL CHARGES AND PAYMENT POLICY . . . . .</b>	<b>30</b>
<b>ADMISSION REQUIREMENTS . . . . .</b>	<b>33</b>
Admission Procedures . . . . .	34
Financial Assistance . . . . .	34
Federal and State Programs . . . . .	35
Scholarships . . . . .	36
Academic Affairs . . . . .	36
Authority in Academic Affairs . . . . .	37
Academic Requirements and Policies . . . . .	37
Housing . . . . .	37
VA Benefits . . . . .	37
Athletics . . . . .	38
Varsity Athletics . . . . .	38
Facilities . . . . .	38
Toles Learning Center . . . . .	38
Paul Horgan Library . . . . .	38
Alumni Chapel . . . . .	40
Daniels Leadership Center . . . . .	40
<b>JUNIOR COLLEGE PROGRAM . . . . .</b>	<b>43</b>
<b>ADMISSION to the JUNIOR COLLEGE . . . . .</b>	<b>44</b>
New Mexico General Education Transfers . . . . .	45
New Mexico General Education/NMMI requirements . . . . .	45
Area I: Communications(new course number) . . . . .	45
Area II: Mathematics . . . . .	46
Area III: Laboratory Science . . . . .	46
Area IV: Social/Behavioral Sciences . . . . .	46
Area V: Humanities and Fine Arts . . . . .	46
<b>GRADUATION REQUIREMENTS – Junior College . . . . .</b>	<b>47</b>
Associate in Arts Degree . . . . .	47
Associate in Science Degree . . . . .	48
Service Academy Preparatory Program Certificate . . . . .	50
Transfer Credit . . . . .	50
NMMI Degree . . . . .	51
Normal Class Loads . . . . .	52
Overloads . . . . .	52
College Distance Learning Courses . . . . .	53
College Level Examination Program (CLEP) . . . . .	53
Credit by Advanced Placement Examination . . . . .	55

Challenge Examinations . . . . .	56
Honor Code/Academic Forgiveness . . . . .	56
COLLEGE COURSES . . . . .	57
DIVISION OF HUMANITIES . . . . .	57
ENGLISH . . . . .	57
COMMUNICATIONS . . . . .	59
Modern Languages . . . . .	60
HUMANITIES . . . . .	61
FINE ARTS . . . . .	61
ART . . . . .	61
DRAMA . . . . .	62
MUSIC . . . . .	62
PHILOSOPHY . . . . .	63
DIVISION NATURAL SCIENCES AND MATHEMATICS . . . . .	64
Biology . . . . .	64
Physics . . . . .	65
Chemistry . . . . .	65
Geology . . . . .	66
Mathematics . . . . .	66
DIVISION OF SOCIAL SCIENCE, BUSINESS ADMINISTRATION AND SECURITY STUDIES . . . . .	68
History . . . . .	68
Political Science . . . . .	70
Psychology . . . . .	70
Sociology . . . . .	71
Geography . . . . .	71
Anthropology . . . . .	72
Business Administration . . . . .	72
Criminal Justice . . . . .	73
LEADERSHIP DIVISION . . . . .	74
LIBRARY DIVISION . . . . .	74
DEPARTMENT OF ACADEMIC ADVISING AND COLLEGE PLACEMENT . . . . .	74
DIVISION OF HEALTH, PHYSICAL EDUCATION AND RECREATION . . . . .	74
MILITARY SCIENCE . . . . .	77
HIGH SCHOOL PROGRAM . . . . .	83
High School Admission . . . . .	84
TRANSFER OF HIGH SCHOOL CREDITS . . . . .	84
ADVANCED PLACEMENT COURSE CREDIT . . . . .	85
GRADUATION REQUIREMENTS - High School . . . . .	87

High School Residence/Course Completion Requirements . . . . .	89
High School Correspondence/Summer School/Distance Learning Standards . . . . .	89
Normal Class Load . . . . .	90
Overloads . . . . .	90
Scholastic Tests . . . . .	91
College courses taken for High School credit . . . . .	91
<b>HIGH SCHOOL COURSES . . . . .</b>	<b>92</b>
<b>DIVISION OF HUMANITIES . . . . .</b>	<b>93</b>
English . . . . .	93
Modern Languages . . . . .	94
Art . . . . .	96
Music . . . . .	96
<b>DIVISION OF NATURAL SCIENCES AND MATHEMATICS . . . . .</b>	<b>97</b>
Biology . . . . .	97
Physics . . . . .	97
Earth Science . . . . .	98
Chemistry . . . . .	98
Mathematics . . . . .	98
<b>DIVISION SOCIAL SCIENCE, BUSINESS ADMINISTRATION AND SECURITY STUDIES . . . . .</b>	<b>100</b>
Social Science . . . . .	100
History . . . . .	100
Business Administration . . . . .	101
<b>DIVISION OF HEALTH, PHYSICAL EDUCATION AND RECREATION . . . . .</b>	<b>102</b>
<b>JUNIOR ROTC LEADERSHIP EDUCATION . . . . .</b>	<b>103</b>
<b>DEPARTMENT OF ACADEMIC ADVISING AND COLLEGE PLACEMENT . . . . .</b>	<b>103</b>
<b>FACULTY . . . . .</b>	<b>105</b>

## **SUPERINTENDENT'S MESSAGE**

As a military school, New Mexico Military Institute (NMMI) is about developing the "whole person." Our vision is to produce leaders who are capable of critical thinking and sound analysis, leaders who have uncompromising integrity and leaders who can meet the demanding physical challenges of those who choose to lead. Should you choose to attend NMMI, you will be challenged in each of these areas on a daily basis.

Our high school program prepares cadets to attend the best colleges in the country, while our college program enables cadets to satisfy college general education requirements and concentrate in areas that will provide a "head start" toward completion of a bachelor's degree in specialized areas. Our high school students may choose to do the first two years of college at NMMI, before transferring to a four-year college or university. Our college students, with careful preparation, can go on to other colleges and complete their degrees in two additional years or remain at NMMI to complete a bachelor's degree in business leadership from New Mexico State University. Regardless of the options chosen, NMMI is all about preparing cadets for expanded opportunities.

A significant testament to our "whole person" development is our service academy prep program. Each year NMMI sends 75-100 Foundation Scholars and self-preps to our five federal service academies, each of which is among the top universities of higher education in our country. If you desire a quality education and challenging leadership, character, and physical development, NMMI is for you!



David R. Ellison  
Rear Admiral, USN (ret)  
Superintendent



# NEW MEXICO MILITARY INSTITUTE

## *Academic VISION*

New Mexico Military Institute will be the nation's finest college preparatory high school and university parallel junior college, operating within a conducive military environment.

## *Academic MISSION*

As an institution of higher and secondary education, NMMI will provide challenging academic preparation through a structured learning environment affording extensive opportunities for leadership and character development.

---

New Mexico Military Institute is primarily an academic institution operating within the framework of a military environment.

The junior college is primarily designed to prepare students for transfer to four-year colleges and universities. An Associate in Arts or Associate in Science degree is awarded to qualified graduates.

The high school curriculum is for those students planning to pursue a college course of study after graduation.

Members of the staff and faculty are selected for their professional qualifications and their willingness to work in a program that is both academic and military.

Every effort is made to instill integrity through an honor system and to develop individual responsibility.

Cadets are both instructed in and offered opportunities to practice the principles and techniques of good leadership. Only cadets in full residence may be members of the Corps of Cadets.

Cadets at New Mexico Military Institute are encouraged to attend chapel. Chapel services are conducted at the Institute at such times as to permit and encourage cadets to attend other church services of their choice in Roswell.

All full-time cadets are required to be unmarried (never been married), without dependents, and resident members of the Corps of Cadets, to participate in military science and physical education activities, and wear the cadet uniform.

The New Mexico Military Institute Board of Regents' reserves the right to change or withdraw, without notice, courses, curricula, policies, tuition, fees, or any other matter contained in this catalog. Such changes are recorded in the Registrar's Office.

An entering college cadet falls under the requirements stated in the catalog at the time of admission or the catalog in effect at the time of return. A college cadet may elect to change to the new catalog upon written request.

### *Equal Opportunity Policy*

NMMI is open to all persons regardless of race, color, religion, sex, or national origin who are otherwise eligible for admission as cadets. The college is an Equal Opportunity Employer and no applicant or employee will be discriminated against because of race, color, religion, gender, or national origin concerning employment or during the course of employment at this Institute.

## SCHOOL CALENDARS (anticipated)

### *Fall 2006 (anticipated)*

Cadet leadership arrives . . . . .	27 Jul 2006
Cadet cadre arrives . . . . .	27 Jul 2006
New cadets arrive . . . . .	4 Aug 2006
Old cadets arrive . . . . .	10 Aug 2006
Advising . . . . .	14 Aug 2006
High school classes . . . . .	15 Aug 2006
Junior College classes start . . . . .	16 Aug 2006
End drop/add . . . . .	25 Aug 2006
Progress report . . . . .	8 Sep 2006
Mid-term grades . . . . .	13 Oct 2006
Penalty withdrawal . . . . .	20 Aug 2006
Thanksgiving Break . . . . .	18 Nov 2006
Term end . . . . .	14 Dec 2006

### *Spring 2007 (anticipated)*

Cadet cadre arrives . . . . .	3 Jan 2007
New cadets arrive . . . . .	4 Jan 2007
Old cadets arrive . . . . .	5 Jan 2007
Advising . . . . .	8 Jan 2007
Classes start . . . . .	9 Jan 2007
End drop/add . . . . .	19 Jan 2007
Progress report . . . . .	2 Feb 2007
Mid-term grades . . . . .	9 Mar 2007
Spring Break starts . . . . .	9 Mar 2007
Penalty withdrawal . . . . .	24 Mar 2007
Re-enrollment . . . . .	24 Mar 2007
Term end . . . . .	11 May 2007

NOTE: All dates from this point are tentative

*Fall 2007*

Cadet leadership arrives . . . . .	26 Jul 2007
Cadet cadre arrives . . . . .	26 Jul 2007
New cadets arrive . . . . .	3 Aug 2007
Old cadets arrive . . . . .	9 Aug 2007
Advising . . . . .	13 Aug 2007
High school classes start . . . . .	14 Aug 2007
Junior College classes start . . . . .	15 Aug 2007
End drop/add . . . . .	31 Aug 2007
Progress report . . . . .	7 Sep 2007
Mid-term grades . . . . .	12 Oct 2007
Penalty withdrawal . . . . .	19 Oct 2007
Thanksgiving break . . . . .	16 Nov 2007
Term end . . . . .	19 Dec 2007

*Spring 2008*

Cadet cadre arrives . . . . .	2 Jan 2008
New cadets arrive . . . . .	3 Jan 2008
Old cadets arrive . . . . .	4 Jan 2008
Advising . . . . .	7 Jan 2008
Classes start . . . . .	8 Jan 2008
End drop/add . . . . .	18 Jan 2008
Progress report . . . . .	1 Feb 2008
Mid-term grades . . . . .	7 Mar 2008
Spring Break starts . . . . .	7 Mar 2008
Penalty withdrawal . . . . .	21 Mar 2008
Re-enrollment . . . . .	21 Mar 2008
Term end . . . . .	10 May 2008

## KEY PERSONNEL

### THE BOARD OF REGENTS

Bill Armstrong, Jr., President,...Roswell  
Jesus A. Salazar, Vice President,...Albuquerque  
Steve Elliott, Past President,...Roswell  
Phillip C. Ingram, member,...Albuquerque  
Bruce D. Ritter, member,...Roswell

### OFFICERS OF THE INSTITUTE

(Year) indicates beginning of Institute service.

#### ADMINISTRATION

##### **Superintendent/President**

David R. Ellison, Rear Admiral, USN Ret (2004) Ph.D., Pennsylvania State University

##### **Executive Vice President**

Judy A. Collins, Colonel, NMMI (1980) M.B.A., Eastern New Mexico University

##### **Dean of Academics**

Larry C. Skogen, Lieutenant Colonel, USAF Ret (2001) Ph.D., Arizona State University

##### **Commandant of Cadets**

Richard V. Geraci, Brigadier General, USA Ret (2005) M.S, Florida Inst of Tech, M.A. Webster University,

##### **Vice President for Health Physical Education and Recreation**

Gregory South, Colonel, NMMI (2005), Ph.D., University of Idaho

##### **Vice President of Advancement**

vacant

##### **Vice Dean/High School Principal**

Donald Beard, Lieutenant Colonel, NMMI (2002), M.A., Eastern New Mexico University

##### **Vice President of Enrollment**

Steven D. Klein, Lieutenant Colonel, NMMI (2006), M.PA, California State University Long Beach

##### **Vice President for Facilities**

Noel H.S. Knille, AIA, RLA (2005)

## GENERAL INFORMATION

### *Member of:*

American Association of Community and Junior Colleges  
American Council on Education  
Association of Governing Boards  
Association of Military Colleges and Schools of the U.S.  
National Association of Campus Activities  
North Central Conference of Summer Schools  
New Mexico Association of Community Colleges  
College Board

## ACCREDITATION

### *Junior College accredited by:*

Higher Learning Commission

(a commission of the North Central Association of Colleges and Schools)

30 North LaSalle Street, Suite 2400

Chicago, Illinois 60602

800-621-7440

<http://www.ncacihe.org/>

### *College Preparatory High School accredited by:*

North Central Association Commission

on Accreditation and School Improvement

Arizona State University

P.O. Box 873011

Tempe, Arizona 85287-3011

800-525-9517

<http://www.ncacasi.org>

### *Additional certifications/licensure:*

State of New Mexico

Public Education Department

Department of the Army as a Military Junior College offering JROTC and SROTC Programs. Honor School with distinction (or its equivalent) since 1909.

## NMMI – A HISTORICAL SKETCH



Roswell, New Mexico dates back to 1866 when it, then known as Rio Hondo, was a cowboy outfitting station on a cattle trail. It acquired a post office in 1873 as well as the name Roswell. This area of Southeastern New Mexico around Roswell, the historic border between the Comanche and Mescalero Apache tribes, was then only sparsely settled.

In 1891, Captain Joseph C. and Mabel Lea invited Robert S. Goss to start a military school similar to the school Goss directed in Fort Worth, Texas. In September, Goss Military Institute opened its doors to twenty-eight pupils. Struggling as a result of poor management and insufficient funds, Goss Military Institute did secure designation as a territorial school and a new name, New Mexico Military Institute, but had to close its doors in 1895.

An appropriations bill passed by the territorial legislature and a generous donation by a resident philanthropist, J.J. Hagerman, of a forty-acre plot of land on North Hill helped reopen the doors of New Mexico Military Institute in its present location on September 6, 1898. The school provided then eight years of academic work and the cadets were organized into two companies. After the Institute inaugurated the junior college in 1915, the school offered four years of high school (NCA accredited, 1917) and two years of college work (NCA accredited, 1938).

New Mexico Military Institute gained special recognition as a military school receiving the distinction as one of ten such distinguished institutions in 1909. In addition to retaining this distinction ever since, the school became a member of the Reserve Office Training Corps program in 1916. Shortly thereafter, NMMI sent 320 alumni and 163 officers into its country's service during World War I. The school's service to World War II was virtually unparalleled with over 170 young men losing their lives.

After experimentation with a four-year college in the fifties, NMMI returned to its high school and junior college program. With the support of a strong Early Commission (ROTC) Program in the junior college and special NCA recognition (1980) as a college-preparatory high school, the school has persistently increased its emphasis in recent years on its academic programs. Annually, approximately seventy cadets prepare for admission to the national service academies and join nine hundred thirty other young men and women in meeting the challenges of one of the nation's most unique and finest preparatory schools.

## **Academic Outcomes**

Graduates will work independently in the pursuit of academic excellence.

Graduates will demonstrate an understanding of a comprehensive body of knowledge.

Graduates will exhibit sound reasoning through critical thinking.

Graduates will demonstrate effective oral and written communication skills.

Graduates will utilize a variety of learning techniques.

Graduates will use technology and resources effectively.

Graduates will demonstrate an awareness of fine arts, music, drama, and languages.

Graduates will understand cultural and ethnic diversity.

Graduates will learn the importance of lifelong learning.

Graduates will demonstrate a global perspective.

Graduates will exhibit a sense of community and responsibility to others.

Graduates will demonstrate moral and ethical decision-making.

## **NMMI Assessment Statement**

NMMI is dedicated to student learning. Cadets are active participants in the learning process. This process includes a variety of measurements encountered throughout their experiences at the Institute.

## **Corps of Cadets**

The Corps of Cadets at New Mexico Military Institute operates within the framework of a military organization with a cadet chain of command, headed by a Cadet Regimental Commander, under the supervision of the Commandant of Cadets and his staff. Working closely with the regimental commander and other cadet commanders, the staff is composed of officers and noncommissioned officers of the U.S. Army in the Military Science Division and other highly trained



professional leaders, either retired military or with military experience. Upon enrollment, new cadets become part of the Corps under the traditional "new cadet-old cadet" system. New cadets are generally assigned to rooms in the barracks with fellow new cadets of the same academic year. Periodically, they may have a roommate that is one class behind or ahead of them. As a new cadet, the cadet is trained and held to the highest standards in the following areas:

1. Respect for authority
2. Self-control, self-discipline and personal accountability
3. Military bearing and appearance
4. Knowledge of New Mexico Military Institute standards of conduct
5. Time management and attention to detail
6. Honor Code and System
7. Leadership and character development
8. Ethical and moral behavior
9. Social etiquette, customs and traditions

Yearlings (second semester in college or second year of high school) may be given supervision over new cadets in his/her unit. It is during this period that the cadet is carefully coached, mentored and evaluated by Troop Officers on their management skills and leadership development.

Old cadets (at least one year college or two years high school) are the leaders in the Corps, having the responsibilities of training the new cadets and monitoring and helping the progress of the yearlings. They are expected to lead by example, running day-to-day Corps operations, and enforce the school standards.

The Institute reserves the right to dismiss, suspend, or otherwise penalize any cadet who does not properly adapt to the academic, disciplinary and physical readiness requirements. Among offenses that may result in dismissal or suspension are those considered to undermine the purposes, goals and mission of the Institute and compromise the standards of character and conduct expected of all cadets. These include the following: hazing or endangerment of any cadet, sexual misconduct, disgraceful or refractory behavior, use or possession of alcoholic beverages, absence without leave, unexcused class absences, or any conduct that may bring discredit upon the Institute. Any use or possession of unauthorized drugs or drug paraphernalia is a dismissal offense; additionally failure to turn prescription drugs into the infirmary may be grounds for dismissal.

Lesser offenses will result in demerits, marching tours or restrictions to the campus. An excessive number of demerits is regarded as a failure or inability to adjust satisfactorily to the demanding environment and may result in suspension or dismissal. NMMI has high academic standards, so poor academic performance may result in suspension.

## Troop Officers

The Troop Officer (TO) is directly responsible for the safety, security, health and welfare, mentoring, counseling, leadership development, discipline and accountability of the cadets assigned to his/her troop. He/she is responsible for helping every cadet realize his/her full potential by maintaining a positive leadership environment in which every cadet can achieve academic excellence, become a leader of character and develop a desire for lifelong physical fitness.

The Troop Officers (TO's) are key members of the Commandant's staff. He/she directly supervises the leadership development of those cadets assigned to the Troop and is focused on the maintenance of good order, discipline, general cadet training and general day to day activities within their troop. He/she, will plan, direct, and enforce regulations, policies, programs, and procedures directly impacting the morale, welfare, administration, activities and training of up to 90 cadets. TO's are key to integrating all information and aspects of a cadet's daily experiences in the development of the "whole" person. He/she must cultivate a positive leadership environment and develop a positive rapport with cadets, parents, guardians and members of the faculty and staff



## **NMMI CLASS DESIGNATIONS**

**Sixth Class** (equivalent to high school freshman). Approximately 65-100 high school freshmen are admitted to New Mexico Military Institute each year.

**Fifth Class** (equivalent to high school sophomore). A cadet must have completed five-and-one-half academic units that apply toward the high school diploma. English I must be one of the units submitted.

**Fourth Class** (equivalent to high school junior). A cadet must have completed eleven academic units to include English I and II that apply toward the high school diploma.

**Third Class** (equivalent to high school senior). A cadet must have completed seventeen academic units to include English I, II, and III that apply toward the high school diploma and have completed all but one unit in each of the core curriculum sequences.

**Second Class** (equivalent to college freshman). A cadet must have a high school diploma, its equivalent from an accredited high school, or meet other minimum admissions requirements.

**First Class** (equivalent to college sophomore). A cadet must have completed 32 academic units that apply toward the associate degree. In addition, completion of one semester in residence at the college level is required.

### **Honor System**

The Honor Code and Honor System of the Corps of Cadets at NMMI belong to the Corps of Cadets but operate under the sanction of the Commandant of Cadets. Simply stated: A cadet will not lie, cheat, steal, nor tolerate those who do. Every cadet is obligated to support and enforce the honor system. Violations of the code may result in serious disciplinary action, suspension or dismissal based on the recommendations of the Cadet Honor Board/Committee as finally determined by the Commandant of Cadets. New cadets are fully trained in all aspects of the honor system, and prospective cadets are encouraged to consider carefully the implications of non-toleration before joining the Corps.

The normal repeat policy for NMMI is to grant credit only for the highest grade. However, if a cadet taking a college course is found in violation of the honor code by cheating, the cadet will receive a grade awarded by the instructor (normally an "F" grade) for that course. Any repeat of that course will be assigned both grades (no academic forgiveness) for the GPA. Thus a cadet may receive both the "F" and any subsequent letter grade earned.

## **Furloughs**

A furlough is the time a cadet may leave NMMI to go home. Furloughs are directly related to activities, grades or deportment. A cadet whose grades or deportment fall below a "C" average loses his or her furlough privilege. Furloughs are taken only on specific weekends designated by the Commandant of Cadets. The three major furloughs during which all cadets may leave NMMI for more than three days are the Thanksgiving, Christmas, and Spring breaks. Dormitories are closed during these extended breaks.

## **Services**

### *Confidentiality of Student Records (FERPA)*

Student records are released only for use by faculty and professional staff for authorized academic-related purposes. The release of student records for off-campus use occurs only with a student's knowledge and consent, or when required by law.

A student's high school record is open for inspection by the student's parents or guardians. College students fall under FERPA regulations and can limit access to their record as specified in federal law. Financially, New Mexico Military Institute considers all students, whose parents provide any portion of their expenses, as "dependent" as defined by Internal Revenue Code of 1954, Section 152 (for form 1098s). The cadet must provide proof of "independent" status to the Registrar prior to the start of the third academic week. College cadets must elect whether or not their grades go to their parents.

The Registrar is the custodian of the student's academic record. A student's academic record may include application for admission information, residency certificate, immunization certificate, date of school entry, student schedules and schedule changes, academic work completed, standardized achievement test scores, transcripts from previous schools attended, and various Veteran's Administration forms.

Public information which may be released upon request includes a student's name, local address, telephone number, date and place of birth, area of concentration, dates of attendance, height, weight, scholastic and/or athletic achievement, degree (if any), previous schools attended and date of graduation. If a student does not wish for this public information to be released, he/she must so notify the Registrar during the first two weeks of classes in each semester. This is normally done during matriculation.

Cadets have the right to inspect and review their educational records within 45 days of the date of their request, but must specify which educational records. They also have the right to request amendment of the records they believe to be in error. They also have the right to file a complaint with the US Department of Education if they determine their rights have been violated. The address for such complaints is at the Registrar's Office.

### *Name Changes*

Name changes are only accepted with proper legal/court documents. NMMI will add the changed name to the transcript with the original name to track such changes.

### *Transcripts and transcript requests*

Transcript requests must be in writing. For cadets over 18 or enrolled in college work, the request must come from the individual whose name is on the transcript. Parents may request transcripts on high school cadets who are not enrolled in college. Transcript requests may be printed from the web at the registrar web site - <http://www.nmmi.edu/reg/> or by following links from the NMMI home page.

### *Class Attendance*

Attendance at all scheduled classes is mandatory and considered essential to the discipline and education of each cadet. For each unexcused absence from class, the cadet will receive tours and demerits. A cadet with more than 10 unexcused absences in an academic year is subject to suspension.

### *Class Drop-Add Procedures*

Cadets may add classes through the first two weeks of a semester.

Cadets who wish to drop a course must initiate the drop with the academic advisor. High school cadet drops are then routed through course instructor to the Associate Dean, the Principal and then forwarded to the Registrar.

The last day for cadets to drop a class with a (W) is the Friday of the 10th week of classes.

## Night Study Hall

NMMI has a Night Study Hall program for all cadets.

## Grades/Grading System

NMMI's grading system is a 4.0 system with no extra credit given for honors or advanced placement courses. Grades with a "T" or "D" prefix are special grades for either transfer work (TA, TB, etc.) or department (DA, DB, DC, etc.). Transfer grades will show on transcripts, however, department grades will only show on report cards.

A-, A, A+	Excellent (90-100)	4.00
B-, B, B+	Above Average (80-89)	3.00
C-, C, C+	Average (70-79)	2.00
D-, D, D+	Below Average (60-69)	1.00
F	Failing	0.00
W	Withdrawn	
WP	Withdrawn while passing	
WF	Withdrawn while failing	0.00
I	Incomplete (semester grade) Grades of "Incomplete" (I) must be made up within one semester after awarded or they become grades of "F."	
S	Satisfactory	
P	Pass	
TR	Transfer grade credits that count towards total credits earned not GPA credits	
TA, TB, etc.	High School transfer grades used to indicate the grade transferred from another school and factored into GPA. Same as letter grade	Same as letter grade
DA, DB, etc.	Letter grade for department as in DA, DB, etc.	

Cadets may retake a course in an attempt to raise a grade. If a higher grade is made the second time the course is taken, the lower grade is removed from the overall GPA but remains on the transcript. However, credit hours may not be awarded twice for the same course.

## *Residency and Residency Requirements*

Enrollment at NMMI is in itself not sufficient to change residency, and NMMI will classify a cadet based on his/her residency at the time of admission. Per state law, any action which will bring into question residency must be resolved by the Registrar.

An individual is considered a resident if he/she has lived in New Mexico for over one year (with property). An individual may become a resident of New Mexico through certain steps, but must complete those steps and one year residency before the cadet status changes to resident from nonresident.

Legal residency is the person's permanent home, which requires a physical presence coupled with an intent to remain and make that location/state one's permanent home. One only has one residence at a time, and retains the former residence until all items are met in the new residence.

At the time of first enrollment, residency is determined by the census date and anyone not meeting residency requirements will be classified as a nonresident. An individual's classification remains as determined at first enrollment, as long as he/she is a continuing cadet, unless the registrar's office has knowledge of a circumstance calling for a reclassification.

### **Requirements to establish NM residency are:**

- a. Twelve month residence in New Mexico (consecutive).
- b. Financial independence to establish residency.
- c. Written declaration of intent to relinquish residency in any other state.
- d. Overt Acts (at least two of these items):
  - 1) If employed, employment within New Mexico
  - 2) Payment of NM income taxes
  - 3) NM drivers' license
  - 4) NM vehicle registration
  - 5) NM voter registration
  - 6) No act inconsistent with being a NM resident, e.g., voting in another state

### *Course numbering system*

All NMMI high school courses are numbers from 001 to 099. All NMMI junior college courses are numbered from 100 to 2999 and are "lower level" college courses designed to meet basic college educational requirements. NMMI is

undergoing conversion to the New Mexico Common Course Numbering System over the next two years. NMMI currently links NMMI course numbers to the NMCCN, but will use the NMCCN whenever possible. College courses so renumbered will have four characters and four numbers assigned by level, course sequence and credits awarded as in ENGL 1113.

### *Graduation Procedures*

The semester prior to graduation, after scheduling starts for their final semester a cadet must apply for graduation. Those planning to graduate must sign up at that time. All graduates are expected to participate in the graduation exercise unless specifically excused by the Academic Dean.

Midyear graduates may participate in graduation exercises if they desire. If they do so, they must appear in the designated military uniform with approved appearance standards.

Graduates who have attained certain levels of academic excellence will be recognized in the graduation exercises according to the following scale:

Graduation with Highest Honors	3.75-4.00
Graduation with High Honors	3.50-3.74
Graduation with Honors	3.25-3.49





## ACADEMIC ACHIEVEMENT LISTS AND HONOR SOCIETIES

### *Superintendent's List*

To qualify for the Superintendent's List a cadet must earn a minimum GPA of 3.50 (both high school and college). The high school cadet must be carrying a load of five solid subjects and the college cadet a minimum of 14 semester hours. Additionally, the cadet's department grade must be an "A." Cadets who take grades of Incomplete are not eligible for the Superintendent's List in the semester in which the Incomplete is received. Credits from developmental courses will not apply.

### *Dean's List*

To qualify for the Dean's List a cadet must earn a minimum GPA of 3.25 (both high school and college). The high school cadet must be carrying a load of five solid subjects and the college cadet a minimum of 14 semester hours. Additionally, the cadet's department grade must be an "A." Cadets who take grades of Incomplete are not eligible for the Dean's List in the semester in which the Incomplete is received. Credits from developmental courses will not apply.

### *Commandant's List*

To qualify for the Commandant's List a cadet must earn an "A" or "B" in department and have a GPA of 2.75 or higher during a semester (both high school and college).

### *Phi Theta Kappa (Junior College)*

New Mexico Military Institute maintains a chapter of the junior college honor society Phi Theta Kappa. Election to the society rewards academic excellence and provides additional opportunities for leadership training. Junior college cadets carrying a full academic load, possessing recognized qualities of citizenship, and holding a 3.25 cumulative GPA in nonremedial courses will meet the minimum qualifications for membership. A or B in department.

### *The National Honor Society (High School)*

The National Honor Society Chapter enables the faculty to select and recognize those members of the 10th, 11th and 12th grades who are outstanding scholars and leaders. Each cadet chosen has demonstrated academic ability, leadership,

character, and service to his/her peers. Naturally, the honor becomes more difficult to attain as the student matures and course work becomes more difficult. Thus, membership at the 12th grade level is a major criterion for acceptance by leading colleges. National Honor Society selection at NMMI requires a 3.4 or higher cumulative GPA.

### *The National German Honor Society (High School)*

The National German Honor Society, Delta Epsilon Phi, enables the faculty to select and recognize those students enrolled in German classes at NMMI who have demonstrated high scholastic attainment in the study of German. Participation in the national education honorary fraternity promotes interest in the study of the German language, literature, culture, and civilization. Selection at NMMI requires a minimum 3.00 cumulative GPA, 3.60 in German courses at NMMI, and demonstrated interest in cocurricular or extracurricular German learning activities.

### **US Academy Preparation (Prep) Program**

NMMI participates as a receiving school for the service academy preparatory programs. The Associations' of Graduates from the Air Force, US Military Academy, and the Naval Academy sponsor qualified students to attend NMMI for one year and participate fully in both the academic program and the Corps of Cadets. Additionally, the SEAGRITS program sponsors students to attend NMMI for a year prior to being appointed to the Coast Guard Academy. NMMI also supports a similar program with the Merchant Marine Academy. Following a successful year at NMMI, these cadets receive appointments to the academies.

### **Academic Suspension, Suspension, Withdrawal and/or Dismissal Policy**

While in attendance at NMMI a grade point average of 2.00 is required of all cadets in order to maintain "good academic standing." Any NMMI cadet whose GPA falls below 1.50 at the end of a semester may be suspended. Any NMMI cadet whose GPA falls below 1.75 at the end of a semester is placed on Academic Probation. The cadet then has one more semester in which to attain a GPA of 1.75 or better. Failing to do so, may result in academic suspension. An entering new cadet whose GPA for the previous semester or whose cumulative GPA for all secondary schooling does not meet the normal admissions criterion of 2.00 for college and at least 2.25 for high school may be admitted conditionally, (AP). Such a cadet must attain a GPA of 1.75 in the first semester at NMMI. Failing to do so, the cadet's overall record will be reviewed by the Academic Review Board and academic suspension may result.

Suspended cadets (academic or department) may apply for readmission to the Institute after one full semester; however, dismissed cadets may not. A cadet who has been placed on suspension may apply for permission to enroll at NMMI after a break of at least one semester. The application for readmission must include evidence that the cadet's record has improved to the extent that success at NMMI is highly probable.

The Registrar will report a cadet's conditional admission and enrollment or probationary status to the cadet, the cadet's parents, advisor, and the Dean.

A cadet whose name has been published in the Daily Status Report under the category of Dismissed, Suspended, Withdrawn or "Drop From Rolls" is not permitted to take final examinations nor participate in any further academic assignments. Cadets who have been suspended must regain "good standing" within the academic division (college or high school) from which they departed before they may be permitted to participate in challenge examinations and/or be awarded a diploma or degree. Normally a cadet regains "good standing" after the application for enrollment has been approved by the Admissions Committee and the cadet attends academic classes for a semester. Enrollment in NMMI summer classes does not constitute reenrollment. However, a cadet, otherwise eligible to return to NMMI at any time, may regain "good standing" upon the recommendation of the Commandant (if department) or the Academic Dean (if academic) with the approval of the Superintendent/President.

Final grades and suspension policy. Cadets must complete the last scheduled day of classes and if suspended/dismissed on or before that day they will receive a WP/WF (college) or W (high school) on their transcript. High school cadets will receive withdrawal grades for the gaining school to use for transfer. If the cadet is suspended after the last day of classes (1515 hours), but before or during finals the cadet will receive a final grade for the class computed with a zero grade for finals not yet completed. Any cadet suspended or dismissed prior to graduation will not graduate with his/her class and can only graduate if he/she regains status as a cadet in good standing (suspensions only).

Cadets who complete all course requirements, including final exams, will receive letter grades on their transcripts for all courses so completed. However, if a cadet completes all work toward a high school diploma or associate degree but is dismissed or suspended just prior to graduation for disciplinary reasons, that cadet will not receive the diploma, nor degree nor take part in graduation. The transcript will be annotated "Met NMMI requirements for graduation. Diploma not awarded. Cadet withdrew."

For cadets in the military who withdraw due to a military emergency (national defense purposes) the following conditions apply. Nongraduating cadets with-

drawing prior to the 12th week of classes will receive a “W” and a full refund of all tuition and fees. Nongraduating cadets withdrawing after the 12th week will receive full credit for the course if they have earned a letter grade of “C” or better. For classes where the grade is below a “C”, the cadet will receive a “W” grade and a refund of that fee. Graduating cadets who have completed at least nine weeks of work with a grade of “C” or better may be eligible for graduation, if their work, all other academic work, Corps requirements and financial requirements are complete at the time of withdrawal.

## **Academic Resources**

### **J. Penrod Toles Learning Center**

Opened in 1985, this modern facility combines the traditional architecture of the campus with modern functions, esthetics, and technology. As a focal point of the Institute’s academic life, the Learning Center is the home of the Paul Horgan Library, Franklin Student Assistance Center, Writing Center, and Information Services.

For more information and an introduction to our resources, please visit the Library’s website: <http://www.nmmi.edu/library/>

### **Writing Center**

The Writing Center provides assistance to every cadet who needs assistance with his/her writing. Cadets learn about the writing process and receive instructions on how to improve their writing skills. They receive instruction on any part of the writing task – from planning to write to checking on correct grammar and usage conventions. The center is open during night study hall, and in the mornings from 0715 to 0750.

### **Franklin Student Assistance Center**

The Franklin Student Assistance Center, located in the J. Penrod Toles Learning Center, houses the Academic Advising and College Placement Department, the Career Lab, and the High School Principal’s office. The Division serves as a focal point for all high school academic advising, career development and testing information. Additionally the Cadet Counseling Center, staffed by licensed counselors and the NMMI chaplain, provides personal and crisis counseling and handles referrals made by advisors and/or other faculty and staff. The Career Lab houses an extensive collection of college catalogs, viewbooks and brochures, col-

lege videos, testing information, test preparation programs and applications as well as several computers and printers connected to the Web for online applications and searches. The Career Lab Coordinator assists cadets with applications online, searches using the "ACT's DISCOVER" college, career and financial aid search web based software, and with print media.

### Academic Advising and College Placement

New Mexico Military Institute has a centralized advising system for high school cadets located in the Franklin Student Assistance Center (SAC), and a faculty advising system for college cadets. A system of developmental advising is implemented for high school cadets whereby the advisor assists through a series of advising sessions the cadet in identifying personal and educational goals. Beginning in the Sixth Class year, advisors introduce cadets to time management and study skills, goal-setting and interest inventories, advancing to the Fifth Class to begin standardized test taking with the mandatory PLAN test. The Fourth Class begins the college planning process, identification of potential majors and search for appropriate colleges. Additionally, juniors take the PSAT, ACT, TOEFL and SAT, if desired. College plans and applications are finalized in the Third Class year culminating in final college choices, applications, scholarship searches and final testing.

Each cadet is assigned an academic advisor upon enrollment at New Mexico Military Institute. Each high school advisor/counselor is responsible for one high school grade level, moving progressively with that class from sixth class to graduation. Advising of college cadets is coordinated through SAC.

Academic Advisors work closely with Troop Officers to mentor council, advise and advocate for the cadets, establishing a rapport and a caring attitude toward them and providing support for them as they learn to deal with the obligations in academics and in the Corps of Cadets, as well as the pressures of being away from home. Academic Advisors act as a resource person providing information on a myriad of topics such as course requirements, learning resources, job markets and selection of colleges after NMMI. They are a liaison between the parents and the teaching faculty, Commandant's Office and Counseling Center to help assure that the cadet is given every avenue available to succeed. Finally, they coordinate preparation of the cadet's graduation plans and provide guidance to the cadet in the achievement of individuals academic goals.

Specialists in personal counseling and academic guidance and counseling are available to all cadets. They provide cadets with career and educational information as well as administer and interpret achievement tests and interest inventories. The New Mexico Military Institute serves as a regional test center for Educational Testing Service's testing programs (PSAT, SAT I, SAT II, GRE, TOEFL AND

CLEP) and the American College Testing Program. (PLAN and ACT). The Student Assistance Center maintains these regularly updated materials for cadet use: general and specialized college guides and directories, a computerized "ACT's DISCOVER" program on colleges, careers and financial aid; college catalogs and view books, books and pamphlets; video cassette materials; general and specialized financial aid guides and directories; college admissions and recruiting materials; admission application materials for schools regularly attended by New Mexico Military Institute graduates; and specialized guidance materials for preparation for professions.

In the library and associated with the advising center is the NMMI Liaison for the service academies. This individual works with cadets who desire to transfer to the five service academies (USAFA, USCGA, USMA, USMMA, and USNA)

### Cadet Counseling Center

The Cadet Counseling Center (CCC) provides cadets advice, counsel, and encouragement in the areas of human interaction, interpersonal relationships, personal growth, spiritual growth, social awareness, and intellectual achievement. It provides cadets with a person who will listen and give feedback on a wide variety of issues.

The personnel of the CCC help the cadets deal with family matters, roommate problems, tobacco/alcohol involvement, homesickness, personal attitude, Corps life, authority, ethical/moral issues, depression, anxiety, eating problems, isolation, conformity to discipline and basic adjustment problems. If the cadet needs more specialized or longterm counseling than the Cadet Counseling Center can provide, referrals are made to appropriate medical, legal or social professionals at the Cadet's expense. Psychiatric services are not available through the CCC.

The CCC is part of the Commandant's Crisis Action Team, a team of various professionals who work together in the event of a crisis. They also are available to counsel cadets in the case of death in the family, loss of home to fire, or various other crises which may arise.

The CCC staff maintains close cooperation and coordination with the Academic Advisors, Commandant's staff which includes the Deputy Commandants for Operations and Support, Squadron Officers and most importantly Troop Officers, Staff and Faculty, and Cadet Regimental Staff in addressing concerns of the cadet's educational, social, and personal development.

Each week the CCC staff, the Commandant, and the Deans meet or exchange information to identify ways to help cadets succeed.

## ACT/SAT Program

NMMI offers an ACT/SAT preparatory program each semester. These courses give the cadet a knowledge base as well as the opportunity to develop skills used in the testing process. The courses cover ACT/SAT test content, test-taking techniques and concentrates on practice tests in order to make the cadet more comfortable and familiar with the examination process.

## **FINANCIAL CHARGES AND PAYMENT POLICY**

1. **Accounts** – Each cadet is assigned two financial accounts:

*Tuition and Fees* – Tuition, fixed fees, room, board, and laundry (limited to specific number of items each trip) are charged each semester.

A yearly charge is made in the first semester for cadet accident insurance. The accident policy is a mandatory plan for all cadets. In addition, **PROOF OF MEDICAL INSURANCE IS REQUIRED FOR ALL CADETS**. If such proof is not received by August 31 for the Fall Semester and January 31 for the Spring Semester, the cadet will be charged for the yearly NMMI Cadet Health Insurance in addition to the mandatory Accident Insurance. Both policies are low-cost plans which are not intended to cover all costs.

*Cadet Account* – The Cadet Account is intended to meet day today expenses (personal hygiene items and school supplies) and uniform costs. The following are Authorized On-Campus Uses:

- Uniform purchases
- Books and supplies
- Lab fees
- Barracks breakage
- Personal items purchased at the Cadet Store
- Military property shortage
- Diploma
- Dry cleaning
- Excess laundry charges
- Infirmary prescription charges
- Library losses and fines
- State textbook losses

Please note that these items may be charged only if the Cadet Account balance is adequate. For those cadets depending on Financial Aid and/or Scholarships for funding, a limit will be established for spending based on each cadet's individual award letter. Charges above the limit will not be allowed.

A monthly statement itemizing all purchases will be forwarded to the parent (copy to cadet) before the tenth of the following month. A minimum balance of \$50 is required at all times. You may maintain as large a balance as you desire. Parents who desire may request their cadet to be placed on a "Necessities Only" program. This limits purchases by the cadet to items that are necessary for personal hygiene, school supplies, and uniform items. **CASH WITHDRAWALS FROM THE CADET ACCOUNT ARE NOT PERMITTED.**

Those uses of the Cadet Account which are **NOT ALLOWED** are listed below with a recommended means of payment. It will be left to the parent and cadet to determine a suitable method to meet these expenses. Alternatives include local bank accounts, maintaining hometown bank accounts, automatic teller machines (one is located at Hinkle Hall - more information concerning the ATM and a special account is available upon request), mailing check directly to cadets, etc. Money orders may be purchased from the Cashier in the Business Office.

**Cash withdrawal** – Personal checks will be cashed in the Cadet Store

**Student activity costs** – personal check or cash accepted

**Travel expenses** – must be arranged by parent and cadet

**Dances** – personal check or cash

**Doctor-dentist charges** – must be arranged by parent and cadet

**Driver's training** – personal check at course registration

**Golf Course charges** – personal check or cash

**ACT-SAT** – personal check or cash

**Photographs** – personal check or cash

2. **Payment Plan** – There are two plans for paying tuition and fees. The cadet account may not be deferred. Payments should be made payable to NMMI. Please write the cadet's name and cadet number in a legible manner on the face of your check. Wire transfers may be sent to Wells Fargo Bank in Roswell, NM, 88201. Wire transfer information is available at the Business Office.

*Cash plan:* You pay total tuition and fee charges prior to or at matriculation. This includes all the Tuition and Fee costs plus an amount necessary for the purchase of uniforms and school supplies.

*Deferred payment plan:* A fee is charged for this service. Under this plan, a deposit is required for Tuition and Fees as well as the amount needed for uniforms and school supplies. This initial payment is followed by monthly payments.



3. **Credit Cards** – The Business Office, Cadet Store, and Golf Shop will accept VISA/MC, American Express and Discover cards. The credit cards will be accepted for total or partial payment of Tuition and Fees and Cadet Account deposits. The Cadet Store and Golf Shop will accept the cards for purchases. Cash advances are not available.

4. **Financial Responsibility** – At the end of any semester, any cadet whose accounts have not been paid in full will not be eligible to reenroll for the subsequent semester. NMMI reserves the right to cancel the registration of any cadet who fails to pay, when due any indebtedness. Credits, transcripts, and diplomas will be withheld until all financial obligations are met.

5. **Scholarship Policy**

- a.) All current cadets and accepted applicants will automatically receive scholarship consideration.
- b.) Institutional scholarships will be credited to the recipient's tuition account on Friday of the third week of classes. Cadets who have withdrawn from NMMI for any reason prior to Friday of the third week of classes will not receive scholarship funds. If a cadet withdraws from school for any reason during the first semester, he/she is not entitled to the scholarship if he/she is reenrolled during the same academic year.
- c.) ROTC scholarships are administered under policies provided by the US Army and will be credited to recipients' accounts upon receipt.

6. **Refund Policy**

- a.) Should a cadet withdraw or be dismissed, the semester tuition and fee charges (other than matriculation and fees imposed as a penalty) will be refunded as follows:

1st five class days	100%
Next five class days	75%
Next ten class days	50%
Next ten class days	25%
- b.) There will be no refund for the semester room charge after the first day of classes. Semester board and laundry charges will be prorated on a weekly basis. The insurance fee is non-refundable. No refund will be made for uniform items which have been altered, laundry marked or worn. Balances remaining in the Cadet Account will be refunded in full provided a balance is not due for tuition and fees.

Please allow four (4) to six (6) weeks to process your account.

## ADMISSION REQUIREMENTS

In addition to meeting reasonable standards of good health, applicants to the NMMI high school and junior college must demonstrate a pattern of good conduct, a willingness to accept responsibilities for their actions and a respect for others. Applicants must also meet academic, physical and English language competency standards as part of their admission, which may exclude cadets with specific disabilities. They must have exhibited the capacity to adjust to and work effectively in a closely supervised, highly disciplined and occasionally stressful environment as well as the ability to live independently in a dormitory setting.

All cadets are required to participate in certain physical activities (e.g., marching with a rifle in formation, running the obstacle course, intramural athletics), all considered essential to the traditions of a military school and to the development of individual leadership skills and a sense of camaraderie as a member of the Corps of Cadets.

### 1. Physical standards considered disqualifying for admission:

- Active epilepsy,
- Diabetes requiring special diet and insulin therapy,
- Blindness,
- Deafness,
- Chronic renal disease,
- Chronic cardiac disease,
- Severe symptomatic asthma,
- Any severe neuromuscular or orthopedic disease or any other substantial physical limiting condition, which, in the opinion of the medical staff, would interfere with the cadet's performance and physical activity in accordance with New Mexico Military Institute's requirements,
- A medical or behavioral condition that could preclude their participation in required physical and academic programs will be reviewed by the Medical Review Board to determine eligibility,
- Inability to participate fully in required physical activities.

### 2. Behavioral/health standards considered disqualifying for admission:

- Any felony criminal conviction,
- Any other conviction where the cadet is still on probation, or under the jurisdiction of the courts adjudication phase. This includes charges that have not been fully resolved because of pending court dates, directed educational programs or community service or mandatory counseling requirements,
- Any permanent dismissal from any school,
- Been suspended three or more times from schools attended within the last three years,
- Any attempted suicide,

- Mani-depressive disorder, evidence of emotional disturbance, bipolar disorder, regularly scheduled psychological counseling or any other severe psychological disorders or limiting condition which in the opinion of the medical staff would interfere with the cadet's ability to function satisfactorily at the New Mexico Military Institute, demonstrated inability to meet the existing NMMI academic requirements without significant accommodations that would alter the academic mission of the Institute,
- A drug addiction,
- An alcohol addiction,
- Inability to participate in the existing college preparatory or university parallel required academic programs.

Acceptance decisions are made without regard to disabilities and in accordance with state and federal law, and are nondiscriminatory.

### Admission Procedures

Cadets must be physically and mentally sound and meet the academic requirements for admission in order to participate fully in the Institute's programs. (Chronic or acute disabilities existing before or after matriculation are causes for dismissal.)

The application for admission should be completed and returned with a check for \$60.00 (payable to NMMI) to the Admissions Office; \$10.00 of this amount is an application processing fee and is not refundable. The remaining \$50.00 is a deposit and is subject to the conditions set forth on the application. Under some circumstances, the Director of Admissions may waive the deposit.

The family physician must fill out the medical forms and return them to the Admissions Office.

A former NMMI cadet reapplies for readmission by submitting a readmission form and a formal application signed by the parent or guardian (or by the cadet if 18 years of age or older). A deposit of \$50.00 must be included with the request. If readmitted the cadet will be classified based upon the academic and disciplinary status that had been established upon departure. If the request for readmission is not granted, the \$50.00 will be returned.

### Financial Assistance

The New Mexico Military Institute provides an extensive program of cadet financial assistance. The program has two distinctive areas. One area involves the var-

ious federal student aid programs and requires proven financial need. These programs are limited to college cadets. The second area of assistance involves institutional scholarships available to both high school and college cadets. Cadet or prospective cadets with a genuine financial need may secure information by contacting the Director of Financial Aid, New Mexico Military Institute.

### Federal and State Programs

Current laws on student aid programs, which are funded by the federal government and the state of New Mexico, limit such aid to college students. The programs are available to those students who provide evidence of need for this assistance in order to attend college, so a family need analysis is part of the application process. Approximately 45% of the college cadets at New Mexico Military Institute receive assistance from these programs. The application priority deadline is May 1 with assistance awarded after that date depending upon availability of funds. The assistance programs open to NMMI cadets include:

1. **Federal Pell Grant.** At New Mexico Military Institute, cadets applying for assistance from any of the Federal programs must apply first for the Pell Grant. The amount of the grant may range from \$400 to \$3300.
2. **Federal Supplemental Educational Opportunity Grants.** New Mexico Military Institute has a limited number of these grants available for students with exceptional need.
3. **Federal Perkins Loan.** Students with exceptional need may receive loans up to \$4000 for each year of junior college. The loans carry an interest rate of 5%. Repayment begins nine months after the recipient ceases to be a student in any college or university, or after an authorized deferment.
4. **Federal Subsidized & Unsubsidized Stafford Student Loan.** Students may borrow up to \$2625 annually at variable interest. The federal government pays the interest while the student is in college. Repayment begins six months after the student leaves college or completes a deferment. The loan is secured from a participating bank, savings and loan agency, or credit union with New Mexico Military Institute certifying the cost of education and degree of student need. A number of states have also instituted student loan programs.
5. **Federal Parents Loans for Undergraduate Students (PLUS).** Parents may borrow directly from participating lenders. Borrowers must complete a standard credit application and be credit worthy. Repayment begins 60 days after the final loan disbursement.

6. **Federal Work Study Program.** Eligible cadets are employed on campus during their free time. Cadets work on the New Mexico work study average of six to ten hours weekly and are paid at or above current minimum wage.
7. **State Student Incentive Grant.** This program provides a limited number of grants of \$200 to \$2500 for especially needy college students who are residents of the State of New Mexico.
8. **New Mexico Lottery Success Scholarship.** This tuition scholarship is available to New Mexico resident students who graduate from a New Mexico high school program, enroll full time in college, and establish and maintain a 2.50 GPA or above.

### Scholarships

The scholarship program at New Mexico Military Institute is the result of endowments made by individuals and organizations interested in NMMI and its cadets. Scholarships vary from those whose criteria are very specific to those that are quite liberally expressed. Many are strictly competitive on academic performance while others are awarded on the basis of need. Both high school and college cadets are eligible to apply for NMMI scholarships. (Refer to ROTC Scholarship section in this catalog for information regarding US Army ROTC Scholarships.)

### The General Richard T. Knowles Legislative Scholarship Program

The Program allows each of New Mexico's 112 legislators to nominate a cadet from his/her district for scholarship consideration. In addition, non-selected applicants may be eligible to receive a scholarship that may not be awarded in a contiguous district. The award includes a state gratis scholarship covering the cost of tuition, fees and an amount to be applied towards uniforms for up to four total years. Renewal of the scholarship requires the cadet to maintain satisfactory academic progress toward graduation and acceptable performance in the Corps of Cadets. Information on the prestigious General Richard T. Knowles Legislative Scholarship Program may be obtained from the Office of Admissions.

### Academic Affairs

Academic offerings are grouped into seven divisions. Associate Deans', acting under the Dean, exercise close supervision over course content and instructional procedures. The divisions are Humanities, including art, English, foreign languages, communications, philosophy, and music; Natural Sciences and Mathematics, including biology, chemistry, geology, physics, and mathematics;

Social Sciences, Business Administration, and Security Studies, including criminal justice, business, political science, history, sociology, psychology and computer concepts; the Student Assistance Center including academic advising and college placement along with cadet counseling; Toles Learning Center, including the Library, Writing Center and other state of the art learning resource resources; Health, Physical Education and Recreation; and Military Science. The Military Science Division offers senior (college) ROTC programs operated by active duty and noncommissioned officers of the Department of the Army. The Junior ROTC Department also offers leadership courses for the high school.

Courses are offered leading to the high school diploma, associate in science and the associate in arts degree. Preprofessional curricula at the college level address concentration areas and specializations.

The Institute's high school academic program is identified by the North Central Association Commission on Accreditation and School Improvement as "College Preparatory." The Institute does not offer vocational-technical programs.

#### Authority in Academic Affairs

The Academic Dean, aided by the Vice Dean/High School Principal, has final authority in academic matters pertaining to high school and college cadets.

#### Academic Requirements and Policies

New Mexico Military Institute is first and foremost a strong academic institution. The policies in the academic area are designed to underscore this fact to maintain the strong reputation of the degrees and diplomas held by NMMI graduates. Failure to meet minimum academic standards can lead to suspension.

#### Housing

All NMMI cadets are required to reside in the barracks.

#### VA Benefits

NMMI enrolls a number of cadets who also drill with New Mexico National Guard and reserve units making them eligible for Chapter 1606 VA benefits. NMMI also grants credit for basic and advanced training, and for certain MOS training applicable to NMMI coursework. Chapter 30, 35 and 1607 benefits are also available.

## Athletics

NMMI is aware that physical fitness builds minds as well as bodies. Therefore, participation either through physical education classes, intramural sports, or other sponsored sports is required of all cadets each semester of attendance at NMMI.

Health, Physical Education and Recreation division offers activities such as: tennis, golf, bowling, racquetball, swimming, backpacking, pickle ball, free weights, and nautilus. They also offer many academic classes such as water safety instruction, foundations in physical education and sports, introduction to recreation, and fundamentals of athletic training.

## Varsity Athletics

New Mexico Military Institute participates in varsity sports in both the high school and junior college divisions. As members of the National Junior College Athletic Association, the junior college teams compete with other colleges in football, basketball, golf, tennis, baseball, and volleyball.

The high school varsity teams are members of the New Mexico Activities Association and participate at the AAA level of competition. Varsity teams are sponsored in the areas of football, basketball, track, soccer, volleyball, swimming, golf, tennis, baseball, wrestling, track, and cross country.

# **FACILITIES**

## Toles Learning Center

### Paul Horgan Library

Centerpiece of Toles Learning Center, the Paul Horgan Library embodies the NMMI mission to “provide challenging academic preparation through a structured learning environment.” The Library offers cadets opportunities for intellectual growth and disciplined study. An educated person must locate, interpret, and apply vast subjects, formats, and amounts of information. To be college-ready, cadets must analyze, synthesize, evaluate, and assess varied sources of data and information. In so doing, they will acquire knowledge and continue a life of learning with a global perspective.

An impressive space of multiple sides and 2½ floors, the Paul Horgan Library reflects the vision of its namesake, the Pulitzer Prize winning author, librarian, and former cadet. In keeping with Colonel Horgan's spirit, the Library is student-centered and inviting. Southwestern accents, leather sofas, deep-seated chairs, and dark wood trim create a warm refuge in the Library. Our friendly, specialized staff and librarians will help you navigate your way around the complicated world of information, in scheduled classes, impromptu requests, and in a Library course.

Organized by the Dewey decimal system, the Library contains over 70,000 items, across disciplines, including:

- Reference;
- Periodicals;
- Literature and literary criticism;
- Ethics and Philosophy;
- History and Social Sciences;
- Contemporary issues;
- Audio-visuals – DVD's, CD's, VHS, & audiobooks.

The Library's electronic access and equipment opens its walls. From classrooms, dorms, and beyond, our Webpage directly connects cadets with the online catalog and electronic sources such as:

- Business Source Elite
- Electric Library
- OCLC's FirstSearch (with inter-library loan capabilities among 6,700 libraries)
- The Internet
- InfoTrac's Health and Wellness Resource Center
- Medline Plus
- Oxford English Dictionary
- ProQuest

The Library further enriches the campus culture through its facilities:

- conference rooms for group study;
- classrooms with emerging technology;
- Mabee Lecture Hall for theater-quality presentations;
- the Ward Room Special Collection of rare and unique scholarly materials; and
- NMMI's Writing Center for class or individual instruction.

The **Daniels Television Center** broadcast studio and production facility makes possible the production of various media for classes, student projects, and Institute history. Courses in broadcast media are available through the Humanities division.



## Alumni Chapel

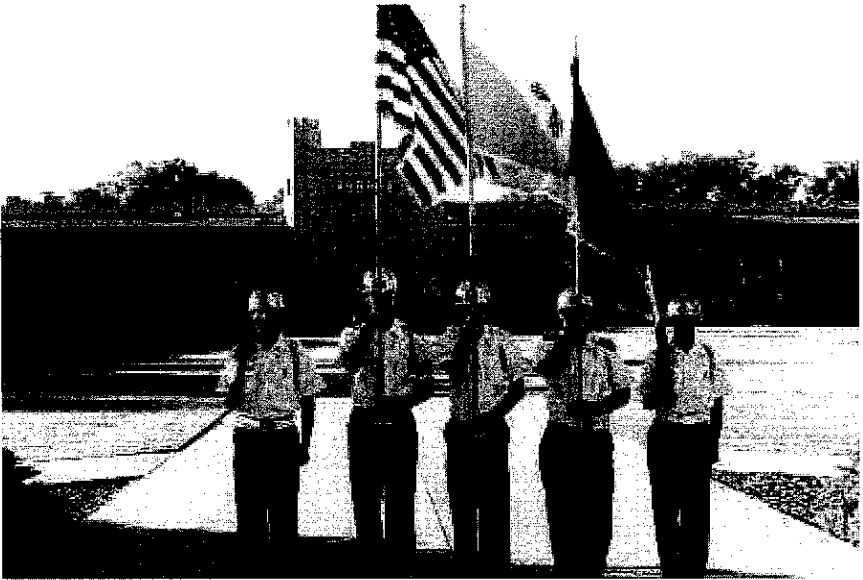
The Alumni Memorial Chapel was dedicated 15 May 1975 to those who gave their “Last Full Measure of Devotion,” NMMI alumni who lost their lives in military service, fighting to preserve the freedoms we now enjoy. Their names and graduating classes are listed on the main bronze plaque in the Memorial Narthex. Contributions from hundreds of alumni and friends of NMMI funded the construction of the building. Lieutenant Colonel L.T. “Babe” Godfrey, Class of 1924 was both the spirit and leader of the effort for the chapel. Through his leadership and the efforts of many others, the Corps has this beautiful house of prayer.

The chapel is located at the entrance to the campus as a solid statement of NMMI’s philosophy that spiritual development is necessary for a complete education. As such, it is the spiritual center of the life of the Corps of Cadets. The chapel serves as a worship center for Catholic, Protestant, Moslem, Jewish and other faith groups represented in the Corps. The chapel and the chapel garden are quiet places of refuge in the midst of an otherwise hectic cadet life. Cadets come to sit in the chapel or memorial garden to study, talk quietly with friends, meditate, and pray.

## Daniels Leadership Center

The Daniels Leadership Center is housed in a new 25,000 square foot building located at the northwest quadrant of the NMMI campus. The Center contains a multi-use Leadership Immersion Theatre, the Leadership Engagement Auditorium with tiered seating for lectures and immersed multi-media events, the Leadership Simulation and Reenactment Stage where the audience may strategize alongside famous leaders in making decisions that would affect the nation or world, and an operative Emergency Operations Center, as well as traditional computer labs, meeting and conference rooms, seminar classrooms, a resource library, and offices. The Center provides administrative oversight of the Institute's leadership and character education programs, and offers both credit and noncredit bearing instruction to high school and college cadets. In addition, the Center offers extended education and professional development programs in leadership and character education to NMMI faculty and staff, and instruction and related contractual services for external constituents, such as those representing schools, government, homeland security and defense, and the private sector. The Center also administers the activities of the Yates Leadership Challenge Complex, which houses a Leadership Reaction Course as well as a low and high Ropes Course that has a capacity to accommodate 70 participants simultaneously. The Center hosts classes in managerial leadership leading to the Bachelor of Business Administration degree offered at the Institute by New Mexico State University. In addition, the Institute's annual Distinguished Speakers Series is hosted at the

Institute through the Center. Summer school camps promoting leadership and character development, such as CHARACTER COUNTS<sup>SM</sup>, are also sponsored by the Institute through the Center.







## **JUNIOR COLLEGE PROGRAM**



## ADMISSION to the JUNIOR COLLEGE

New cadets are admitted only at the beginning of the Fall and Spring semesters at New Mexico Military Institute.

The New Mexico Military Institute admits college freshmen from regionally accredited high schools (or foreign equivalents) to its Associate of Arts or Associate of Science degree under one of three sets of criteria:

1. Minimum of a 2.0 average or better on a 4.00 scale for all high school core courses and an ACT or SAT score of 18 or 870, respectively, or better; or admission to a commissioning program or preparatory program leading to a commission with any branch of the United States Armed Forces.
  - High school core courses used in calculating the average shall include courses in: Humanities, Mathematics, Sciences, Computer Sciences, and Social Sciences.

**or**

2. Minimum of a 2.5 average or better on a 4.00 scale for all high school core courses and graduating in the top 50% of the high school class.
  - High school core courses defined as in paragraph 1 above.

**or**

3. Failing to meet the above academic standards, cadets must be recommended by the NMMI Admission Committee in accordance with established procedures.

**NOTE: NMMI reserves the right to admit those candidates it determines to be best qualified for entrance.**

In some cases, a candidate with an acceptable (NM – 45) score on the General Education Development (GED) examination may be accepted.

Those cadets seeking a commission should also refer to the section for admissions requirements into the Contract Senior ROTC Program leading to the US Army Reserve Commission.

Foreign cadets whose primary language is not English must have a score of 500 (paper based test) or 173 (computer) or better in the Test of English as a Foreign Language (TOEFL), and may substitute these tests for the ACT.

## New Mexico General Education Transfers (HED)

During the 2005 New Mexico Legislative session, Senate Bill 161, consistent with the requirements of state law, was signed into law to further enhance and facilitate the articulation of general education courses among New Mexico's colleges and universities. Designated general education core course, successfully completed at any regionally accredited public institution of higher education in New Mexico are guaranteed to transfer to any New Mexico public institution.

The core matrix of approved courses guaranteed to transfer and meet general education requirements can be found on the New Mexico Higher Education Department website (as of May 2006) <http://hed.state.nm.us> and follow the colleges and universities link to the drop down menu for transferring credits and core matrix.

This is the current listing of NMMI courses to the New Mexico Common Course Numbering (NMCCN) System. This system facilitates the articulation of coursework through a set of uniform course designations.

The NMCCN is a four alpha prefix that identifies the subject area and then four digits each having a specific meaning. The first digit represents the course level (1 - freshman, 2 - sophomore etc.), the next two represent the sequence of the course, while the last represents the credit hours assigned to the course.

For example: ENGL 1113 is the general freshmen composition course required at all schools. A course of ENGL 1093 would be a lower level college level course, while ENGL 0113 would be a developmental English course.

Over the next two years NMMI will convert all course numbers to the NMCCN course number or place a course in its proper sequence in that schema. The General Education Common Core is 35 semester hours.

### **New Mexico General Education/NMMI requirements**

<i>course (NMCCN) future courses</i>	<i>Area I: Communications (new course number)</i>	<i>9 hours</i>
College-level English Composition (ENGL 1113)	ENG 111 (ENGL 1113)	3 hours
College-level writing (ENGL 1123) (ENGL 2113)	ENG 112 (ENGL 1123) or ENG 218 (ENGL 2113)/BUS 204	3 hours
Oral Communications (COMM 1113)	COM 123 (COMM 1113)	3 hours

Area II: Mathematics			6-9 hours
College Algebra (MATH 1113)	MTH 136 (MATH 1113)		3 hours
Calculus I (MATH 1613 or 1614)	MTH 195 (Calculus I)		4 hours
Other College level math (Calc, Stats)	MTH 125, 137, 186, 190, 196, 241 and 295		3 or 4 hours

Area III: Laboratory Science			8 hours
General Biology w/lab (BIOL 114, 1124 (non-majors), BIOL 1214, 1224 majors)	BIO 101, 102, BIOL 1114		4 hours
General Chemistry w/lab (CHEM 1114, 1214, 1224)	CHM 111, 112		4 hours
General Physics w/lab (PHYS 1114, 1214)	PHY 111, 112		4 hours
Geology/Earth Science w/lab (GEOL 1114/1214)	ESC 111, 112		4 hours
Astronomy w/lab			

Area IV: Social Behavioral Sciences			6-9 hours
Economics (ECON 2113 (macro) ECON 2123 (micro))	ECN 211, 212		3 hours
Introductory Political Science (POLS 1113)	POL 111		3 hours
Introductory Psychology (PSYC 1113)	PSY 101		3 hours
Introductory Sociology (SOC 1113)	SOC 101		3 hours
Introductory Anthropology (ANTH 1113)	ANT 150		3 hours

Area V: Humanities and Fine Arts			6-9 hours
Introductory History Survey (HIST 1113, 1123, 1053, 1063, 2113)	HIS 101, 102 (Western Civ) HIS 105, 106 (World) HIS 211, 212 (US)		3 hours
Introductory Philosophy (PHIL 1113)	PHL 111		3 hours
Introductory course history, theory, or aesthetics of arts/literature	ENG 200 level courses (literature) ART 131, 132 (Art History) MUS 130 (Music Appreciation) PHL 181 (Crit Thinking), PHL 201 (Ethics)		3 hours

## GRADUATION REQUIREMENTS – Junior College

NMMI's curriculum is university parallel and most cadets continue for their baccalaureate degrees by completing requirements for the Associate of Arts or Associate of Science degree.

### Associate in Arts Degree

The Associate in Arts Degree is designed to provide a solid foundation in the liberal arts for cadets interested in pursuing a four-year or advanced degree in Humanities, Business, Social Science, or related fields.

*The requirements for the Associate in Arts Degree are:*

**Residency.** A college cadet must earn a minimum of 24 credit hours at NMMI and spend two semesters in residence.

**Semester Hours.** Minimum of 68 hours is required, no more than 12 (contract cadets only) in Military Science. Credit may be transferred from other accredited schools if the courses and grades are acceptable. Courses transferred from other schools do not affect the grade point average at NMMI.

**Required Subjects:** The core curriculum of required courses (46 hours Gen Ed requirements) is:

- English – 2 courses
- Communications – 1 course
- History – 2 courses
- Laboratory Sciences – 2 courses
- Social Science – 2 courses
- Health – HPER 1113
- Military Science – 4 courses
- Mathematics – 1 course
- Humanities or Language – 2 courses
- Electives - as required

Total 68 hours for graduation

English – Cr. 6 hrs. – two courses

ENGL 1113, plus three hours from either composition (ENGL 1123; ENGL 2113, Technical Writing; or BUS 204, Business Writing) or literature (ENG 211-212, Western World Literature I, II; ENG 221-222, English Literature I, II; ENG 235-236, American Literature I, II or any 2xxx level ENGL course).



Communications – Cr. 3 hrs – one course  
COMM 1123 – Public Speaking

History – Cr. 6 hrs. – two courses  
Any combination of courses with the HIS designation.

Humanities or Modern Language – Cr. 6 hrs.  
Non-language courses which satisfy this requirement are so labeled in the course description section.

Laboratory Science – Cr. 8 hrs.  
Any two lab sciences except CHM 101

Mathematics – Cr. 3 hrs.  
MTH 125 or higher.

Social Science – Cr. 6 hrs.  
Six hours from designated, non-history social science courses. (See course descriptions; courses meeting the Social Sciences requirement are so labeled.)

Health – Cr. 3 hrs  
Health and Wellness (HPER 1113) is a required course for the AA/AS degree.

Military Science. – Cr. 2 - 12 hrs.  
Military Science is required at NMMI. Only those cadets with three years of JROTC or who are in the contract program and do not contract are exempt. ROTC contract cadets must have taken American Military History by the time they get their bachelor's degree.

**Grade Point Average.** The minimum cumulative GPA for the associate in arts degree is 2.0.

### Associate in Science Degree

The Associate in Science Degree is designed to provide a solid foundation in mathematics and the sciences for cadets interested in pursuing a four-year or advanced degree in Mathematics, Sciences, Engineering, Premedical/dental/veterinarian, or related fields.

*The requirements for the Associate in Science Degree are:*

**Residency.** A college cadet must earn a minimum of 24 credit hours at NMMI and spend two semesters in residence.

**Semester Hours.** Minimum of 68 hours is required, no more than 12 (contract cadets only) in Military Science. Credit may be transferred from other accredited schools if the courses and grades are acceptable. Courses transferred from other schools do not affect the grade point average at NMMI.

**Required Subjects:** The core curriculum of required courses (40 hours Gen Ed requirements) is:

- English – 2 courses
- History – 1 course
- Laboratory Sciences – 3 courses. 2 are sequential.
- Social Science – 1 course
- Health – HPER 1113
- Military Science – 4 courses
- Mathematics – 2 courses
- Humanities or Language – 2 courses
- Electives – as required

Total of 68 hours for graduation

English – Cr. 6 hrs. – two courses

ENGL 1113, plus three hours from either composition writing (ENGL 1123; ENGL 2113, Technical Writing; or BUS 204, Business Writing) or literature (ENG 211-212, Western World Literature I, II; ENG 221-222, English Literature I, II; ENG 235-236, American Literature I, II or any 200/2xxx level ENG/ENGL course).

History – Cr. 3 hrs. – one course

Any course with the HIS designation except for HIS 110 – American Military History

Humanities or Modern Language – Cr. 6 hrs.

Humanities courses which satisfy this requirement are so labeled in the course description section.

Laboratory Science – Cr. 12 hrs.

Two semesters must be a science sequence CHM 101 and ENV 101 do not satisfy the Laboratory Science requirement.

Mathematics – Cr. 6 hrs.

MTH 136 (MATH 1113) or higher.

Social Science – Cr. 3 hrs.

Three hours from designated, non-history social science courses. (See Course Descriptions; courses meeting the Social Sciences requirement are so labeled.)

Health – Cr. 3 hrs

Health and Wellness(HPER 1113) is a required course for the AA/AS degree.

Military Science. – Cr. 2 - 12 hrs.

Military Science is required at NMMI. Only those cadets with three years of JROTC or who are in the contract program and do not contract are exempt. ROTC contract cadets must have taken American Military History by the time they get their bachelor's degree.

**Grade Point Average.** The minimum cumulative GPA for the associate in science degree is 2.0.

### Service Academy Preparatory Program Certificate

This is a one-year program designed to prepare the service academy preparatory cadet seeking admission to a service academy.

**Residency.** A college cadet must earn a minimum of 32 credit hours at NMMI and spend two semesters in residence. Completion does not guarantee admission to a service academy.

**Semester Hours.** Minimum of 32 hours is required over two semesters.

- English – 2 courses (ENGL 1113 and one higher English course)
- Laboratory Sciences – 2 physical science courses
- Physical Education – 2 courses in Prep PE
- Military Science – 2 courses
- Mathematics – 2 courses MTH 136/MATH 1113 or higher
- Electives – as necessary for the 32 hour minimum requirement

**Transfer Credit.** Academic credit to meet graduation requirements may be acquired elsewhere and entered on the NMMI transcript. Cadets who contemplate this action should check with the concerned academic department chair to assure that the course taken elsewhere does indeed meet Institute academic criteria. For college cadets a maximum of two college courses from an accredited school may be transferred back to NMMI to meet graduation requirements after leaving the Institute in good standing. Equivalent Institute courses must be identified and a grade of "C" or better is required. Transferred courses do not affect the NMMI grade point average.

New Mexico Military Institute accepts credits transferred from other accredited colleges and universities as long as a satisfactory grade is earned for the course or courses that are similar to the NMMI college curriculum. New Mexico Military Institute reserves the right to determine whether courses earned else-

Transfer grades are not used to compute cumulative grade point averages.

With the exception of some remedial courses, NMMI credits generally are transferable to any university in the nation.

New Mexico Higher Education Department routinely prepares a chart showing comparable courses, which meet basic requirements and transfer between colleges in New Mexico. This matrix is on the NM HED web site.

**Transfer credit appeals.** Any cadet who wishes to appeal the transfer must file a written appeal to the Registrar providing a course syllabus and description. Within 30 days, the file will be reviewed by the Registrar and Division Head and the cadet will receive the result in writing. If the cadet wishes to continue the appeal on denied courses, they must appeal to the Academic Dean in writing. This appeal must be within 30 days. If denied and the course is a NM General Education course, the student has the right to appeal to the Higher Education Department in Santa Fe.

### NMMI Degree

The core curriculum requirements generate essentially a liberal arts associate degree, but by careful selection of elective courses, a cadet can build a course sequence, which parallels those in other institutions that lead to the bachelor's degree. Cadets' academic advisors will counsel their advisees on other institutions' requirements for undergraduate degrees and suggest NMMI courses which parallel those sequences. Except at four-year institutions that do not sponsor ROTC programs, virtually all NMMI credit producing courses may count towards the 128-140 semester graduation total which most colleges require for the bachelor's degree. However, as is increasingly becoming common, many bachelor's degrees require 10 semesters to complete. All graduates are required to complete the CAAP assessment in the last semester.

Working with their academic advisors, NMMI college cadets can currently, within the A.A. degree, complete concentrations in the following:

Art

Communications

English

German

Spanish

Business

    Business Administration

    Computer Information Systems

Criminal Justice  
Government  
Political Science  
    Business emphasis  
    Social science emphasis  
Pre-law  
History  
Service Academy Preparation

Working with their academic advisors, NMMI college cadets can currently, within the A.S. degree, complete concentrations in the following:

Mathematics/Science  
    Construction Engineering  
    Life Sciences  
    Mathematics  
    Physical Sciences  
    Pre-Engineering  
    Pre-med/Pre-dental/Pre-vet  
Service Academy Preparation  
Health, Physical Education and Recreation  
    Exercise Science  
    Health  
    Sports Science and Management  
    Parks and Recreation  
    Athletic Training  
    Performance Leadership and Psychology

The completed concentrations will be listed on the student's transcript. In all cases, ROTC contract cadets must meet additional requirements. Those students who do not complete one of those listed will be awarded the concentration in Liberal Arts.

### Normal Class Loads

The normal academic load for college cadets is 17 semester credit hours. The minimum load is 12 semester credit hours.

### Overloads

Cadets with a 3.0 GPA or above from the previous grading period may take more than 19 credit hours. The advisor may authorize a course load of up to 19 hours,

and the Division Advisor/Chair may authorize a course load of 20-21 hours. Only the Academic Dean may authorize a course load of 22 or more hours. Overloads are not recommended for a cadet with a GPA of less than 3.0 from the previous semester grading period. Upon the cadet's request and with the recommendation of the academic advisor, an overload may be authorized if the cadet's schedule (academic, athletic, extra-curricular) suggests that there is reasonable probability that the cadet can successfully handle the overload.

### College Distance Learning Courses

Correspondence/online/distance courses must meet the following criteria:

- Cadet must take the course at NMMI if offered
- If the cadet cannot schedule the required class in the last semester of the graduation year, the cadet can request a correspondence or online course
- A cadet may take a correspondence/online course if the course is not offered in the curriculum, and must receive the Dean's permission prior to enrolling in the course
- Online courses must have a mandatory valid login.

### College Level Examination Program (CLEP)

College credit is allowed for successfully completing the various CLEP tests. CLEP credit may be transferred to the Institute to meet graduation requirements, although the Institute does not use CLEP scores in computing a cadet's grade point average. A cadet must attain a CLEP mean scale score equivalent to a final course grade of "A" or "B" on a scale published by the College Entrance Board. Credit for CLEP General Examinations will be awarded if the cadet attains a "B" grade. English Composition with Essay is the only CLEP General Examination that will generate credit for the NMMI courses English 1113 and/or English 1123.

**CLEP SCORES** As posted on the College Board web site. Some courses NMMI does not accept for transfer credit. See the CLEP administrator or Registrar for current passing scores and transfer.

<i>CLEP EXAMINATION</i>	<i>CREDIT</i>	<i>EQUIVALENT</i>
American Literature	6.0	ENG235/236
Analyzing & Interpreting Literature	6.0	HUM CREDIT
English Comp with essay	6.0	ENGL 1113/1123
English Literature	6.0	ENG221/222
Humanities	3.0-6.0	1 OR 2 HUM

### SCIENCE & MATHEMATICS

Algebra	3.0	MTH136
Algebra-Trigonometry	3.0	MATH ELECTIVE
Biology		NO LAB SCIENCE
Chemistry		NO LAB SCIENCE
calculus with elem functions	6.0	MTH195 AND 2.0 ELECTIVE
College Mathematics		NONE
Natural Science		NONE
Trigonometry	3.0	MTH186

### FOREIGN LANGUAGES

French Level 1	8.0	FRN 111, 112
French Level 2	6.0	NA
German Level 1	8.0	GER 111, 112
German Level 2	6.0	GER 211, 212
Spanish Level 1	8.0	SPN111,112
Spanish Level 2	6.0	SPN211,212

### HISTORY & SOCIAL SCIENCE

American Government	3.0	POL111
Educational Psychology	3.0	PSY199
History of the US I	3.0	HIS211
History of the US II	3.0	HIS212
Human Growth & Development	3.0	SOC SCI REQUIREMENT
Macroeconomics	3.0	ECN211
Microeconomics	3.0	ECN212
Psychology, Intro	3.0	PSY101
Social Sciences & History		TBD
Sociology, Intro	3.0	SOC101
Western Civilization I	3.0	HIS101
Western Civilization II	3.0	HIS102

### BUSINESS

Accounting, Principles	6.0	BUS213/214
Business Law, Intro	3.0	BUS202
Info Systems & Applications	3.0	CIS117
Management, Principles of	3.0	BUS201
Marketing, Principles of	3.0	BUS ELECTIVE

Credit by Advanced Placement Examination

NMMI grants credit on the AP Exam as specified in the following table.

<i>AP EXAM</i>	<i>SCORE</i>	<i>COURSE CREDIT</i>	<i>CREDIT HOURS</i>
Art History	3-5	ART131	3.00
Biology	3 OR 4	BIOL 1114/1214	4.00
	5	BIOL 1214 & 1224	8.00
Calculus AB	3-5	MTH195	4.00
Calculus BC	3 OR 4	MTH196	4.00
	5	MTH195 & MTH196	8.00
Computer Science A			
Computer Science AB			
Chemistry	3 OR 4	CHEM 1214	4.00
	5	CHEM 1214 & 1224	8.00
Economics Macro	3-5	ECN211	3.00
Economics Micro	3-5	ECN212	3.00
Eng Lang/Lit			
Composition	3	ENG103	3.00
	4	ENGL 1113	3.00
	5	ENGL 1113 & 1123	6.00
Environmental Science			
European History	3 OR 4	HIS101	3.00
	5	HIS101 & HIS102	6.00
French Language	3	FRN111 & FRN 112	8.00
	4	FRN 111, 112, 211	11.00
	5	FRN 112,112, 211,212	14.00
French Literature			
German Literature	3	GER111, 112	8.00
	4	GER 111,112,211	11.00
	5	GER 111,112,211,212	14.00
Government & Politics,			
Comparative	3-5	POL111	3.00
Government & Politics,			
Comparative	3-5	POL214	3.00
Human Geography			
International English			
Language			
Latin Literature			
Latin: Vergil			
Music Theory			
Physics B	3 OR 4	PHY111	4.00
	5	PHY111 & PHY112	8.00
Physics C - Electrical			



Physics C - Mech	4 OR 5	PHY213	5.00
Psychology	3-5	PSY101	3.00
Spanish Literature	3	SPN111, 112	8.00
	4	SPN 111, 112,211	11.00
	5	SPN 111,112, 211, 212	14.00
Spanish Literature			
Statistics			
Studio Art	3-5	ART105	3.00
Studio Art: 2D Design	3	ART101	3.00
Studio Art: 3D Design	4 OR 5	ART 101 & ART110	6.00
US History	3 OR 4	HIS211	3.00
	5	HIS211 & HIS212	6.00
World History	3 OR 4	HIS105	3.00
	5	HIS105 & HIS106	6.00

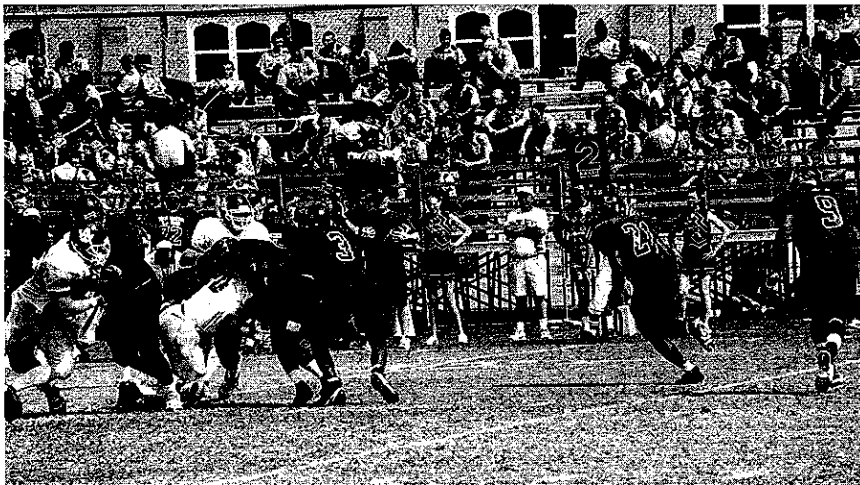
### Challenge Examinations

With the Academic Dean's approval, a cadet may challenge a course offered at NMMI. If successfully challenged, usually by passing a test prepared by the academic department concerned, credit for the course will be shown on the transcript. Challenge actions are initiated by the cadet with the approval of the head of the appropriate academic department.

A \$35.00 fee for the challenge examination will be required in accordance with current Board of Regents' policies. Challenge examination results are reported on a "Credit" or "No Credit" basis on the transcript. Challenge credits do not affect grade point averages. Neither challenge nor CLEP credits satisfy minimum load requirements to maintain cadet status. A challenge exam may not be attempted if the cadet has already received a grade for the attempted course, nor during the last three weeks of a semester without special permission.

### Honor Code/Academic Forgiveness

The normal repeat policy for NMMI is to grant credit only for the highest grade. However, if a cadet taking a college course is found in violation of the honor code by cheating, the cadet will receive a grade awarded by the instructor (normally an "F" grade) for that course. Any repeat of that course will be assigned both grades (no academic forgiveness) for the GPA. Thus a cadet may receive both the "F" and any subsequent letter grade earned.



## COLLEGE COURSES

### DIVISION OF HUMANITIES

#### ENGLISH

#### **ENG 100**

**BASIC WRITING. – CR. 3 HRS\***

Provides the fundamentals of composition in standard English, with an emphasis on the sentence and short writing tasks. A required course for students with TOEFL scores of 500-550, ACT English scores of 16 or lower, or SAT verbal scores of 330 or lower, or COMPASS placement score at or below 39. Students enrolled in ENG 100 must be co-enrolled in RDG 100.

*\*Courses numbered 100 are remedial level and do not generate graduation credit hours. This course may be used to meet residency and eligibility requirements, but may not be used to fulfill the 68 hour graduation requirement.*

#### **ENG 103**

**WRITING WORKSHOP. – CR. 3 HRS\***

Develops skills in grammar, spelling, vocabulary, and composition in a workshop

atmosphere. Required for students who need to strengthen basics before enrolling in Freshman Composition as determined by COMPASS scores from 40-69. Prerequisite: Minimum grade of C in ENG 100 or ACT English minimum score of 17 or SAT verbal minimum score of 340. \* This course may be used to meet residency and eligibility requirements, and may be used to fulfill the 68-hour graduation requirement. However, it does not fulfill the English graduation requirement.

#### **ENGL 1113**

**FRESHMAN COMPOSITION. – CR. 3 HRS  
(Area I ENGL 1113 NMCCN)**

Includes expository composition, the study of rhetoric, vocabulary, grammar and usage, spelling, and models for writing. Requires library paper. Mandatory core requirement. Prerequisite: ACT English score of 18 or SAT verbal of 490 minimum or successful completion of ENG 103. Placement for those scoring 17 or less on the ACT and 490 or less SAT verbal score will be determined by a COMPASS test. The minimum COMPASS score is 70. (This course is a prerequisite for ENGL 1123 and all 200-level English courses.)

**ENGL 1123****FRESHMAN COMPOSITION. – CR. 3 HRS  
(AREA I ENGL 1123 NMCCN)**

Continues ENGL 1113, focusing on expressive, expository, and critical writing about literature and film. Satisfies the English graduation requirement. Recommended for all students who transfer to four-year colleges. Prerequisite: ENGL 1113.

**ENG 140****THE BIBLE AS LITERATURE. – CR. 3 HRS  
(SATISFIES HUMANITIES REQUIREMENT)  
(AREA V)**

Considers selected portions of the Bible to represent its various genres (hortatory, prophetic, poetic, gospels, epistolary, and apocalyptic). Closely reads representative passages in order to capture the historical, literary, and theological aspects. Briefly notes the relation of the Bible's influence on other literature.

**ENG 211****WESTERN WORLD LITERATURE I.  
CR. 3 HRS (SATISFIES HUMANITIES  
REQUIREMENT) (AREA V)**

Offers reading in the major literature of the Western world from Greco-Roman times to the Renaissance. The readings will reflect intellectual, cultural, historical, and literary changes. Composition required. May apply toward the English graduation requirement. Prerequisite: ENGL 1113.

**ENG 212****WESTERN WORLD LITERATURE II.  
CR. 3 HRS (SATISFIES HUMANITIES  
REQUIREMENT) (AREA V)**

Continues readings of the major literature of the West that reflect social and literary developments from the Neoclassical period to the Twentieth Century. Composition required. May apply toward the English graduation requirement. Prerequisite: ENGL 1113.

**ENGL 2113****TECHNICAL WRITING. – CR. 3 HRS  
(AREA I ENGL 2113 NMCCN)**

Emphasizes the theory and practice of writing in technical fields. Stresses efficient writing processes and effective written products, including correspondence, resumes, and reports. Students successfully completing this course may not enroll in BUS 204. Prerequisite: ENGL 1113. May apply toward the English graduation requirement.

**ENG 221****ENGLISH LITERATURE I. – CR. 3 HRS  
(SATISFIES HUMANITIES REQUIREMENT)  
(AREA V)**

Surveys major writers of English literature with some attention to minor authors and to trends and backgrounds. One oral report and one paper. Major authors studied: Chaucer, Spenser, Shakespeare, Donne, Johnson, Milton, Dryden, Swift, Pope, Johnson. May apply toward the English graduation requirement. Prerequisite: ENGL 1113.

**ENG 222****ENGLISH LITERATURE II. – CR. 3 HRS  
(SATISFIES HUMANITIES REQUIREMENT)  
(AREA V)**

Continues ENG 221 with the following main authors studied: Wordsworth, Coleridge, Byron, Shelly, Keats, Tennyson, Browning, Arnold, Yeats, Eliot. May apply toward the English graduation requirement. Prerequisite: ENGL 1113.

**ENG 235****AMERICAN LITERATURE I. – CR. 3 HRS  
(SATISFIES HUMANITIES REQUIREMENT)  
(AREA V)**

Covers American writing from the colonial period to the Civil War with emphasis upon the chief figures. Historical and literary developments are studied, along with literary types, both prose and poetry. A critical

review is required. May apply toward the English graduation requirement. Prerequisite: ENGL 1113.

### **ENG 236**

**AMERICAN LITERATURE II. – Cr. 3 HRS**  
(SATISFIES HUMANITIES REQUIREMENT)  
(AREA V)

Continues ENG 235 and carries the student into modern American writers and movements. A critical review is required. May apply toward the English graduation requirement. Prerequisite: ENGL 1113.

### **ENGL 2453**

**THE RISE OF THE NOVEL IN THE**  
**EIGHTEENTH CENTURY. – Cr. 3 HRS**  
(SATISFIES HUMANITIES REQUIREMENT)  
(AREA V)

This elective humanities course combines the events of the eighteenth century with the emergence of the novel in England. May not apply toward the English graduation requirement, but does meet a humanities credit. Prerequisite: ENGL 1113.

### **RDG 100**

**READING/STUDY SKILLS. – Cr. 3 HRS\***

Develops college level reading and study strategies via individualized diagnosis and work assignments. A required course for all students concurrently enrolled in ENG 100. Students who pass an initial screening examination may be excused.

*\*Courses numbered 100 are remedial level and do not generate graduation credit hours. This course may be used to meet residency and eligibility requirements, but may not be used to fulfill the 68 hour graduation requirement.*

## COMMUNICATIONS

### **COM 101**

**TV PRODUCTION – Cr. 3 HRS**

Introduces the elements of television production. Students will learn the basics of video production, use and maintenance of video and studio cameras; basics of framing and elements of audio, lighting and linear editing. Through field exercises and use of equipment, students will learn basic concepts relevant to the history of broadcasting and its influence on American culture.

### **COM 102**

**BROADCAST JOURNALISM. – Cr. 3 HRS**

Course builds upon TV Production but with emphasis on the work of the television studio. Students will learn elements of newscast writing, different formats and various production positions. Field exercises. Prerequisite: COM 101 and instructor's permission.

### **COM 110**

**INTRODUCTION TO MASS**  
**COMMUNICATIONS. – Cr. 3 HRS**

Focuses on mass communications and its effects on society. Covers the history, theories, development and impact of various forms of mass communications on popular culture and society.

### **COM 111**

**JOURNALISM. – Cr. 3 HRS**

Builds upon composition skills learned in previous courses and applies those skills to journalistic writing with a focus on newspaper work. Students should possess basic word processing skills. Prerequisite: ENGL 1113, or ENGL 1113 co-enrollment.

### **COM 112**

**NEWSPAPER PRACTICUM – Cr. 1 HR**

Builds upon the skills learned in COM 111.

Repeatable for a total of 3 credits.  
Prerequisites: ENGL 1113, COM 111, or permission of instructor.

### **COMM 1113**

**PUBLIC SPEAKING. – Cr. 3 HRS**  
**(AREA 1 COMM 1113 NMCCN)**

Delineates principles of public speaking and various types of public addresses. Emphasis on clear, competent expression through thorough preparation. Tape recordings for individual study.

### **COM 131/132**

**PRACTICUM IN YEARBOOK PRODUCTION**  
**CR. 1-1 HR**

Affords opportunity for individually directed study and practice in the processes of yearbook preparation and print plant procedures; develops knowledge of production techniques of the printing and publishing industries through hands-on work resulting in the production of the NMMI yearbook, the Bronco. Each course may be repeated once.

### **COM 198**

**TELEVISION PRODUCTION INTERNSHIP. –**  
**CR. 1 HR**

Provides both theoretical knowledge and hands-on experience in the process of television production. May be repeated up to a total of three (3) semester hours. Prerequisite: Permission of instructor.

## MODERN LANGUAGES

Students with up to two years of high school language should enroll in the 1xxx/100 series. Students with three years or more of high school language should enroll in the 2xxx/200 series.

Students should enroll sequentially in language courses.

## LANGUAGE LABORATORY:

Each student enrolled in the 100/1xxx (beginning) series will have a language laboratory each week. A lab fee is required.

### **ARBC 1114-1124**

**ELEMENTARY ARABIC – Cr. 4-4 HRS**  
**(SATISFIES HUMANITIES REQUIREMENT)**

Introduces the Arabic alphabet and pronunciation. Stresses basic skills; listening, speaking, reading and writing. Develops an awareness of multiple Arabic-speaking cultures. Classroom and lab for the non-native speaker.

### **ARBC 2113-2123**

**INTERMEDIATE ARABIC. – Cr. 3-3 HRS**  
**(SATISFIES HUMANITIES REQUIREMENT)**

Continues the study of grammar and language and stresses effective communication. Prerequisite: ARBC 1114/1124.

### **GER 111-112**

**ELEMENTARY GERMAN. – Cr. 4-4 HRS**  
**(SATISFIES HUMANITIES REQUIREMENT)**

Stresses grammar and basic skills; listening, speaking, reading and writing; the class meets daily, with three hours of lecture and two periods of lab each week.

### **GER 211-212**

**INTERMEDIATE GERMAN. – Cr. 3-3 HRS**  
**(SATISFIES HUMANITIES REQUIREMENT)**

Continues the study of grammar and language, and stresses effective reading. Prerequisite: GER 112, two years of high school German, or permission of the instructor.

### **SPN 111-112**

**ELEMENTARY SPANISH. – Cr. 4-4 HRS**  
**(SATISFIES HUMANITIES REQUIREMENT)**

Stresses grammar and basic skills; listening, speaking, reading and writing. The

class meets daily with three hours of lecture and two periods of lab each week.

### **SPN 211-212**

**INTERMEDIATE SPANISH. – Cr. 3-3 HRS**  
**(SATISFIES HUMANITIES REQUIREMENT)**

Continues the study of grammar and language, and stresses effective reading. Prerequisite: SPN 112, two years of high school Spanish, or permission of the instructor.

## **HUMANITIES**

### **HUM 110**

**ETHICS IN LEADERSHIP. – Cr. 3 HRS**  
**(SATISFIES HUMANITIES REQUIREMENT)**

Integrates character education and moral development theory within the context of leadership. Stresses critical thinking through readings and films on fictional, historic, and contemporary leaders dealing with moral and ethical issues.

## **FINE ARTS**

### **ART**

#### **ART 101**

**BASIC DESIGN. – Cr. 3 HRS**

Introduces elements and principles of two dimensional design. Requires completion of projects for individual portfolios. (Material cost: approx. \$35.00) (Fall semester)

#### **ART 105**

**DRAWING. - Cr. 3 HRS**

Develops basic approaches to drawing. Emphasizes learning to see natural and manmade objects in contour, gesture, direction, proportion, shading. (Fall semester)

#### **ART 110**

**COLOR AND COMPOSITION – Cr. 3 HRS**

Introduces color theory and its uses. Explores color composition combinations and resulting outcomes. Prerequisite: ART 101 and permission of instructor (Spring semester).

#### **ART 131**

**ART HISTORY. – Cr. 3 HRS (SATISFIES HUMANITIES REQUIREMENT)**  
**(AREA V ARTS 2113 NMCCN)**

Surveys painting, sculpture, architecture from Paleolithic to Renaissance. Research paper required. (Fall semester)

#### **ART 132**

**ART HISTORY. – Cr. 3 HRS (SATISFIES HUMANITIES REQUIREMENT)**  
**(AREA V ARTS 2123 NMCCN)**

Surveys painting, sculpture, architecture from Renaissance to Modern. Research paper required. (Spring semester)

#### **ART 140**

**COMPUTER GRAPHIC DESIGN. – Cr. 3 HRS**

Introduction to the basic elements of design on the computer. Coverage raster, vector, and layout based programs. Requires completion of projects for student portfolio review. Primary software to be introduced includes Photoshop, Illustrator and Indesign. Lab fee required.

#### **ART 199**

**PORTFOLIO ENHANCEMENT. – Cr. 1-3 HRS**

Develops portfolio of student work to focus on drawing, painting, basic design, and color theory. Prerequisite: Permission of instructor.

#### **ART 202**

**PAINTING. - Cr. 3 HRS**

Introduces painting. Emphasizes color theory and mixing, developing technique, and control of media. Prerequisite: ART 101, 105, and 110 or permission of instructor. (Material cost: approximately \$35.00)

## DRAMA

### **DRA 101**

**DRAMA AS LITERATURE. – Cr. 3 HRS**  
**(SATISFIES HUMANITIES REQUIREMENT)**

This course surveys drama as literature and includes selections from the ancient Greeks to the present. (Satisfies Humanities requirement)

### **DRA 103-104**

**THEATER PRODUCTION. – Cr. 1-1 HRS**

Provides exercises and workshops in theater skills, stagecraft and technical support or production. May repeat one time.

## MUSIC

**NOTE:** A maximum of eight (8) semester credit hours of ensemble courses (band, choir, etc.) may be applied toward A.A. or A.S. degree requirements.

### **MUS 101-102**

**BAND I – Cr. 1 HR**

### **MUS 201-202**

**BAND II – Cr. 1 HR**

Provides marching and concert band performance experience. The marching band aspect begins in August and continues until the football season is completed. Emphasis on performance in a concert setting begins in November and continues through the remainder of the academic year. Admission is gained through audition or invitation of the Band Master.

### **MUS 103-104**

**JAZZ BAND I – Cr. 1 HR**

### **MUS 203-204**

**JAZZ BAND II – Cr. 1 HR**

Provides opportunities for those qualified students who are interested in jazz, popular, and "big band" music. Admission is gained

by audition or invitation of the Band Master.

### **MUS 105-106**

**CONCERT CHOIR. I – Cr. 1 HR**

### **MUS 205-206**

**CONCERT CHOIR. II – Cr. 1 HR**

Provides opportunities for those interested in singing and performing vocal music of numerous periods and styles. Admission is gained by audition or invitation of the choral director.

### **MUS 107-108**

**CATHOLIC CHAPEL CHOIR I – Cr. 1 HR**

### **MUS 109-110**

**PROTESTANT CHAPEL CHOIR I – Cr. 1 HR**

### **MUS 207-208**

**CATHOLIC CHAPEL CHOIR II – Cr. 1 HR**

### **MUS 209-210**

**PROTESTANT CHAPEL CHOIR II – Cr. 1 HR**

Provides opportunities for those interested in singing and performing sacred music.

### **MUS 111-112**

**APPLIED MUD-SIC LESSONS. – Cr. 1 HR**

### **MUS 211-212**

**APPLIED MUD-SIC LESSONS. – Cr. 1 HR**

Provides private music instruction on piano, voice, and various instruments. Prerequisite: Permission of instructor.

### **MUS 113-114**

**VOCAL ENSEMBLE – Cr. 1 HR**

### **MUS 213-214**

**VOCAL ENSEMBLE – Cr. 1 HR**

Provides opportunities for those qualified students who are interested in small vocal ensemble participation and its related musical genres (jazz, popular, madrigal, barber-shop, etc.) Admission by audition or invitation of Choral Director.

**MUS 115****SMALL ENSEMBLE – CR. 1 HR**

Provides a small ensemble performance experience as well as an expansion of instrument techniques. Prerequisite: permission of instructor. (Can be repeated.)

**MUS 130**

**MUSIC APPRECIATION. – CR. 3 HRS**  
**(SATISFIES HUMANITIES REQUIREMENT)**  
**(AREA V MUSIC 1113 NMCCN)**

Delineates music listening and surveys music literature from the Renaissance period to the present. Open to all students. No previous training in music is required.

**MUS 140**

**FUNDAMENTALS OF MUSIC THEORY. – CR. 3 HRS**  
**(SATISFIES HUMANITIES REQUIREMENT)**

Studies include music notation, rhythms, scales, intervals, and chord structure. Critical listening skills and very basic piano knowledge will be developed and required. Designed for music students wanting to learn to write music and understand the intricacies of music. Previous training in music is required.

**MUS 199 OR 299**

**INDEPENDENT STUDY IN MUSIC. – CR. 1-3 HRS**

Prerequisite: Permission of instructor.

**PHILOSOPHY****PHL 111**

**INTRODUCTION TO PHILOSOPHY – CR. 3 HRS**  
**(SATISFIES HUMANITIES REQUIREMENT)**  
**(AREA V PHIL 1113 NMCCN)**

Considers philosophical problems of lasting significance. Includes critical study of works of important philosophers and representative philosophical areas, with emphasis on the process of formal analysis.

**PHL 120**

**WORLD RELIGIONS. – CR. 3 HRS**  
**(SATISFIES HUMANITIES REQUIREMENT)**  
**(AREA V)**

Surveys the great world religions with a rational analysis of the concepts of God, creation, man, scripture and ethics presented. Religious movements to be discussed include: Islamic, Hinduism, Buddhism, Taoism, Confucianism, Judaism and Christianity.

**PHL 181**

**CRITICAL THINKING – CR. 3 HR**  
**(SATISFIES HUMANITIES REQUIREMENT)**  
**(AREA V)**

Studies informal logic and critical thinking, using writing, debate and persuasive speaking to put theory into practice.

**PHL 201**

**ETHICS. – CR. 3 HRS**  
**(SATISFIES HUMANITIES REQUIREMENT)**  
**(AREA V)**

Introduces issues arising in the study of moral philosophy, the development of moral theory and its application to contemporary problems. Special consideration is given to the language and logic of arguments (meta-ethics).

**PHL 202**

**LOGIC – CR. 3 HRS**  
**(SATISFIES HUMANITIES REQUIREMENT)**  
**(AREA V)**

Introduces both deduction and induction. In the case of the former, consideration is given to both categorical and propositional logic. In the case of latter, consideration is given to analogy, causality and Mill's Methods, probability, statistical reasoning, and hypothetical generalization. Informal fallacies are considered as well.



**PHL 299****SPECIAL STUDIES IN PHILOSOPHY.- Cr. 1-3 HRS**

Prerequisite: permission of instructor.

**DIVISION  
NATURAL SCIENCES  
AND MATHEMATICS****BIOLOGY****BIOL 1154****GENERAL BIOLOGY. – Cr. 4 HRS (3-2L)  
(AREA III)**

Comprehensive survey course in general college biology. Studies the basis for and understanding of the current concepts of life and the structures and functions of living organisms. Includes the origin and evolution of life, genetics, metabolism, and the kingdoms of life. Recommended for non-science majors. Lab fee required.

**BIOL 1214-1224****PRINCIPLES OF BIOLOGY I, II. – Cr. 4-4 HRS (3-2L)  
(AREA III NMCCN BIOL 1214 -1224)**

Designed to prepare the student for further study in scientific and medical fields. The first semester includes biological chemistry, cell structure and function, basic metabolic pathways, genetics, biotechnology and evolution. The second semester includes: a survey of biological diversity, plant structure and function, animal structure and function and ecology. Credit from both classes will satisfy one lab science sequence for the AS degree. Recommended for science majors.

**BIO 190****CURRENT ISSUES IN LIFE SCIENCES,  
MEDICINE AND THE ENVIRONMENT – Cr.  
1 HR**

A weekly seminar for students, regardless

of major, who are interested in today's issues in the life sciences, the environment and medicine, and who wish to further understand and explore questions raised by these issues. Prerequisite: Enrollment limited to students who have completed a science course and one semester at NMMI. Permission required. (Does not meet AA or AS science requirement)

**BIO 199****SPECIAL PROBLEMS IN BIOLOGY. –  
Cr. 1-3 HRS**

Prerequisite: Permission of instructor.

**BIOL 2254****INSECTS AND MAN. Cr. 4 HRS (3-2L)**

Comprehensive general Entomology course with added emphasis on how insects, their activities and control, have influenced human lives, history and military operations. Prerequisite BIOL 1154 or 1214. Open to science majors or non-majors. Lab fee required.

**BIOL 2434****INTRODUCTION TO HUMAN ANATOMY  
WITH PHYSIOLOGY. Cr. 4 HRS. (3-2L)**

Details the structure and function of the human body. Prepares the student of pre-med, pre-dental, pre-vet and physical education curricula for advanced courses in the study of anatomy and physiology. Prerequisite: BIOL 1114 or 1214. Lab fee required.

**BIO 221****MICROBIOLOGY - Cr. 4 HRS (2-4L)**

Introduces the physiology, morphology and activities of microorganisms. Labs involve practice in the techniques of isolation, culture and identification of microorganisms. Prerequisite: BIOL 1154 or 1214 Lab fee required.

**BIOL 2554****AGRICULTURAL AND PUBLIC HEALTH BIO-SECURITY – CR. 4 HR. (3-2L)**

Comprehensive course concerning the agricultural and public health infrastructures, their impacts, possible biological threats, detection and safeguarding against introduction of disease, vector and pest agents. Avenues of introduction, response systems, and remedial treatments are emphasized. An intensive, one week, field exercise is mandatory. Prerequisite: BIO 221 Microbiology

**ENV 101****ENVIRONMENTAL SCIENCE. – CR. 4 HRS. (3-2L) (DOES NOT MEET AS SCIENCE REQUIREMENT)**

Applies basic ideas of biology, chemistry, and physics to the study of our environment, and how humans depend on a healthy environment. Some examples of topics covered are: biological communities, population biology, food and agriculture, pest control, air and water pollution, and energy resources. About half the weekly labs are field trips. Open to all students.

**PHYSICS****PHY 111-112****GENERAL PHYSICS. – CR. 4-4 HRS (3-3L) (AREA III NMCCN PHYS 1114 – 1124)**

Classical physics with emphasis on physical principles as applied in mechanics, heat, sound, electricity, optics and atomic structure. Assumes facility with trigonometry and algebraic manipulations, including solving two equations in two unknowns. Lab fee required. Prerequisite: - high school algebra 2 or higher math. Must pass PHY 111 to enroll in PHY 112.

**PHY 199****SPECIAL PROBLEMS IN PHYSICS. – CR. 1-3 HRS**

Prerequisite: Permission of instructor.

**PHY 213-214****ENGINEERING PHYSICS – CR. 5-5 HRS (4-2L) (AREA III NMCCN PHYS 1214 - 1224)**

Fundamental for engineers, science students, and pre-meds. First semester: mechanics, waves, thermodynamics. Second semester: electricity, optics, modern physics. Extensive problem solving. Lab fee required. Prerequisite: Calculus, MTH 195-196. Must pass PHY 213 to enroll in PHY 214.

**PHY 222****ENGINEERING STATICS.- CR. 3 HRS**

Studies engineering mechanics using vector methods. Includes study of rigid bodies in equilibrium, center of gravity, beams, flexible cables and trusses. Prerequisite: high school or college physics. Calculus co-requisite or consent of instructor required.

**CHEMISTRY****CHM 101****INTRODUCTION TO CHEMISTRY. – CR. 3 HRS (3-1L) (DOES NOT SATISFY AA/AS SCIENCE REQUIREMENT)**

Provides an overview of the significance of chemistry in many areas of life, such as nutrition, life, fertilizers and medicine. Topics include matter, periodic table, nomenclature, reaction types, water, air, and nuclear chemistry. Lab fee required.

**CHEM 1214-1224****GENERAL CHEMISTRY. – 4-4 HRS (3-3L) (AREA III NMCCN CHEM 1214 - 1224)**

Introduces the fundamental theories and principles of chemistry. Transfers as main-

stream (general) chemistry for all majors. No previous chemistry course work is required. Prerequisite: MTH 111, high school Algebra 2 or higher math. Lab fee required. Must pass CHEM 1214 to enroll in CHEM 1224.

### **CHM 115**

**ALLIED HEALTH CHEMISTRY. – 4 HRS  
(3-3L)**

Integrates general chemistry, organic chemistry, and biochemistry with biological and health applications. Selected topics focus on chemical understanding and explanation of life-important processes that occur in living organisms. Lab fee required.

### **CHM 213-214**

**ORGANIC CHEMISTRY – CR. 4-4HRS  
(3-3L)**

Studies nomenclature, uses, basic reactions, and preparation methods of the most important classes of aliphatic and aromatic compounds. Laboratory develops techniques, preparative and analytical methods in organic chemistry. Prerequisite: C or better in CHM 112.

### **CHM 199**

**SPECIAL PROBLEMS IN CHEMISTRY. –  
CR. 1-3 HRS**

Prerequisite: permission of instructor.

## **GEOLOGY**

### **ESC 111**

**PHYSICAL GEOLOGY. – CR. 4 HRS (3-2L)  
(AREA III NMCCN GEOL 1114)**

Surveys the geological processes in the light of the concept of plate tectonics. Laboratory work includes the identification of rocks and minerals and the use of geologic maps to study physical processes. Lab fee required.

### **ESC 112**

**HISTORICAL GEOLOGY. CR. – 4 HRS  
(3-2L) (AREA III NMCCN GEOL 1214)**

Constructs the history of an evolving earth, with special reference to North America. Laboratory exercises in correlation by use of fossils and physical evidence. Lab fee required.

### **ESC 199**

**SPECIAL PROBLEMS IN GEOLOGY. –  
CR. 1-3 HRS**

Prerequisite: permission of instructor.

## **MATHEMATICS**

### **MTH 111**

**INTERMEDIATE ALGEBRA. – CR. 3 HRS\***

Studies topics in exponents, radicals, factoring, linear, and quadratic equations and inequalities, polynomials, systems of linear equations and problem solving. \* This course may be used to meet residency and eligibility. However, it can not be used to fulfill the math requirement.

### **MTH 125**

**INTRODUCTION TO CONTEMPORARY  
MATHEMATICS – CR. 3 HRS (AREA II)**

Includes topics with modern applications such as networks and circuits, scheduling, probability and statistics, voting methods and apportionment, game theory, patterns and tilings, fractals, growth, and consumer mathematics.

### **MATH 1113**

**COLLEGE ALGEBRA – CR. 3 HRS  
(AREA II NMCCN MATH 1113)**

Presents the typical course in college algebra. Topics include functions, graphs, polynomials, rational, exponential, and logarithmic functions, conic sections, linear systems, and inequalities. Includes use of graphing calculators as a math tool. Prerequisite: MTH 111 or equivalent experience.

**MTH 137****MATHEMATICS FOR BUSINESS AND SOCIAL SCIENCE – Cr. 3 HRS (AREA II)**

Studies finite math topics used in business, biology, and social science including systems of linear equations, matrices, linear programming, counting techniques, probability, and math of finance. Prerequisite: MTH 111 or equivalent.

**MTH 138****CALCULUS FOR BUSINESS AND SOCIAL SCIENCE. – Cr. 3 HRS (AREA II)**

Introduces differential and integral calculus with application to business, economics, the behavioral and life sciences. Prerequisite: MTH 136 or MTH 137 or equivalent.

**MATH 1213****TRIGONOMETRY. – Cr. 3 HRS (AREA II NMCCN MATH 1213)**

Covers trigonometric functions, trigonometric identities and equations, radian measures, inverse trigonometric functions, complex numbers, vectors, and applications. Students may enroll concurrently in College Algebra (MTH 136).

**MTH 190****PRE-CALCULUS. – Cr. 4 HRS (AREA II)**

Studies functions necessary for students planning to take calculus. Topics include polynomial functions, exponential functions, logarithmic functions, trigonometric functions, inverse functions, with emphasis on concepts on graphical and algebraic properties of these functions. Also included are systems of equations and an introduction to sequences and series. Graphing calculators are used extensively. Prerequisite: College Algebra or an advanced math course beyond Algebra II in high school, concurrent enrollment or completion of Trigonometry.

**MATH 1614****CALCULUS I. – Cr. 4 HRS (AREA II NMCCN MATH 1614)**

Presents materials in the first of a three-semester sequence designed for students majoring in engineering, mathematics, computer science, or the physical sciences. The sequence approaches the topics in a graphical and numerical interpretation as well as the standard symbolic method. Topics covered include a review of basic algebraic functions, exponential functions, logarithmic functions, trigonometric functions, and function inverses, then limits, the derivative, analysis using the derivative and applications of the derivative. Prerequisite: a minimum grade of "C" in MTH 136 - 186 or in MTH 190 or equivalent experience.

**MATH 1624****CALCULUS II. – Cr. 4 HRS (AREA II NMCCN MATH 1624)**

Presents materials in second component of the three-semester sequence that covers the antiderivative, definite integral, applications of the definite integral, methods of integration, elementary differential equations, Taylor-polynomials, infinite series, power series, indeterminate forms. Prerequisite: a minimum grade of "C" in MTH 195.

**MTH 199****SPECIAL PROBLEMS IN MATHEMATICS. – Cr. 1-3 HRS**

Involves courses in such areas as programmable calculators, advanced computer programming, and advanced mathematics. Prerequisite: permission of instructor.

**MTH 241****INTRODUCTION TO STATISTICS. – Cr. 3 HRS**

Introduces beginning topics in statistics, including random samples, organizing data, measures of central tendency and dispersion, probability theory, binomial and normal distributions, estimation, hypotheses

testing, regression and correlation. Prerequisite: MTH 136 or MTH 111 with a grade of "B" or better.

### **MTH 295**

**MULTI-VARIABLE CALCULUS. – Cr. 4 HRS**  
(NMCCN 2614)

Covers geometry in the plane and in space, conic sections, polar coordinates, parametric equations, vectors, functions, partial differentiation, multiple integration with applications, vector calculus. Prerequisite: a minimum grade of "C" in MTH 196.

### **MEN 145**

**ENGINEERING GRAPHICS. – Cr. 3 HRS**

Introduces engineering graphical methods and disciplines with emphasis on basic principles and applications. Topics include technical drawing and design, orthographic projection, free hand sketching, and descriptive geometry. The student is required to learn AUTOCAD. Lab fee required. Does not meet mathematics graduation requirements.

### **MEN 146**

**ENGINEERING GRAPHICS II – Cr. 3 HRS**

Advanced Engineering graphical methods with emphasis on 3D modeling and applications. Topics include solids and surfaces, rendering, lighting, perspective, and descriptive geometry. The student is required to learn AutoCAD. Prerequisite: MEN 145. Lab fee required. Does not meet mathematics graduation requirements.

### **CIS 181**

**PROGRAMMING IN C++ - Cr. 3 HRS**

Introduces structured programming and software engineering in C. The course emphasizes the systematic development of algorithms and programs, programming style, techniques for testing, debugging, and documenting. File structures, software design principles and practices are dis-

cussed. Prerequisite: MTH 136. Lab fee required.

### **CIS 199**

**SPECIAL PROBLEMS – Cr. 1-3 HRS**

Prerequisite: permission of instructor.

## **DIVISION OF SOCIAL SCIENCE, BUSINESS ADMINISTRATION AND SECURITY STUDIES**

### HISTORY

#### **HIS 101-102**

**DEVELOPMENT OF WESTERN  
CIVILIZATION. – Cr. 3-3 HRS**

(SATISFIES EITHER HUMANITIES OR  
HISTORY REQUIREMENTS, BUT CANNOT BE  
USED FOR BOTH.)

(AREA V – NMCCN HIST 1053 – 1063)

Studies the social, economic, political, philosophical, and aesthetic development of humans from antiquity to the end of the Medieval period. Second semester studies human history from 1500 AD to modern times. This course sequence attempts to have students understand the parallels between past and contemporary history to better comprehend the political and social realities of the contemporary world

#### **HIS 105**

**EARLY WORLD HISTORY – Cr. 3 HRS.**

(SATISFIES EITHER HUMANITIES OR  
HISTORY REQUIREMENT, BUT CANNOT BE  
USED FOR BOTH.) (AREA V)

Surveys major civilizations of the world from their origins to 1500. Course examines contributions of Asian, African, Islamic, Western and American civilizations while highlighting the interrelationships between them. Course is both thematic and chronological.

**HIS 106**

**MODERN WORLD HISTORY – Cr. 3 HRS**  
(SATISFIES EITHER HUMANITIES OR  
HISTORY REQUIREMENT, BUT CANNOT BE  
USED FOR BOTH.) (AREA V)

Surveys major civilizations of the world from 1500 to the present. Course examines development and diffusion of modern culture throughout the world in the 19th and 20th centuries. Emphasis is on the interaction of the West on traditional cultures.

**HIS 110**

**AMERICAN MILITARY HISTORY. – Cr. 3 HRS**  
(SATISFIES EITHER HUMANITIES OR  
HISTORY REQUIREMENT, BUT CANNOT BE  
USED FOR BOTH. CANNOT BE USED FOR AS  
HISTORY)

Surveys the development of American military institutions, policies, experiences, and traditions in peace and war from colonial times to the present. Emphasizes the relationship between military and other aspects of American society and the role of the military in the establishment, expansion, preservation, and development of the nation.

**HIS 170**

**ASIAN CIVILIZATIONS TO 1600. – Cr. 3 HRS**  
(SATISFIES EITHER HUMANITIES OR  
HISTORY REQUIREMENT, BUT CANNOT BE  
USED FOR BOTH.)

Introduces the study of Asian civilizations including India, China, and Japan. Emphasizes the development of civilizations in Asia before the arrival of Europeans and the Age of Imperialism. Special emphasis is placed on general traits and historical events that underlie the values of Asian people.

**HIS 171**

**MODERN ASIAN CIVILIZATION - Cr. 3 HRS**  
(SATISFIES EITHER HUMANITIES OR  
HISTORY REQUIREMENT, BUT CANNOT BE  
USED FOR BOTH.)

Traces the impact of the European arrival in Asia and the Age of Imperialism. Emphasizes the interaction of China, India, and Japan with Europeans as well as the growth of the modern nation states after independence from colonial rule. Korea, Vietnam, Indonesia, Malaya, Singapore, Burma, Thailand, and Pakistan are also considered.

**HIS 211-212**

**HISTORY OF THE UNITED STATES. – Cr. 3-3 HRS**  
(SATISFIES EITHER  
HUMANITIES OR HISTORY REQUIREMENTS,  
BUT CANNOT BE USED FOR BOTH.)  
(AREA V NMCCN 1113 – 1123)

History 211 surveys the political, economic, social, and cultural development of the United States from colonial beginnings through 1877. History 211 studies the history of the United States from the end of Reconstruction to the present. Particular attention is also given to various political, social, and economic movements, as well as the place of the U.S. in world affairs. Can satisfy the 6-hour history graduation requirement.

**HIS 280**

**LATIN AMERICA: A HISTORICAL SURVEY. – Cr. 3 HRS**  
(SATISFIES EITHER HUMANITIES OR  
HISTORY REQUIREMENT, BUT CANNOT BE  
USED FOR BOTH.)

Examines the political, economic, social, and cultural development of Latin America from its Indian origins to the present. Special attention is given to the twentieth century interaction of the region with the United States and the rest of the world.

## POLITICAL SCIENCE

### **POL 111**

**UNITED STATES POLITICS AND GOVERNMENT. – Cr. 3 HRS**  
(SATISFIES SOCIAL SCIENCE REQUIREMENT)  
(AREA IV NMCCN POLS 1113)

Analyzes the national constitution, federalism, political process, presidency, congress, judiciary, civil rights and liberties, economic policy and formation of foreign policy.

### **POL 201**

**INTERNATIONAL RELATIONS – Cr. 3 HRS**  
(SATISFIES SOCIAL SCIENCE REQUIREMENT)

Introduces the student to world politics and international conflict with consideration of trade and economic transactions as well as treaties, alliances, and international organizations.

### **POL 214**

**COMPARATIVE WORLD POLITICS. – Cr. 3 HRS**  
(SATISFIES SOCIAL SCIENCE REQUIREMENT)

Overviews the contemporary spectrum of world politics and government. Concepts emphasized include both the principles and structures of government. Comparative analysis is the basic approach to this course.

### **POL 220**

**STATE AND LOCAL POLITICS AND GOVERNMENT. – Cr. 3 HRS (SATISFIES SOCIAL SCIENCE REQUIREMENT)**  
(NMCCN POLS 1213)

Explores the process of conflict resolution at the state and local level. Emphasis is on the changes brought about by urbanization, sub urbanization, the growth of the sunbelt, and changes accompanying the legislative reapportionment of the recent past. The abstract principles of political science are applied to the real world of politics and government in New Mexico.

## PSYCHOLOGY

### **PSYC 1113**

**GENERAL PSYCHOLOGY. – Cr. 3 HRS**  
(SATISFIES SOCIAL SCIENCE REQUIREMENT)  
(AREA IV NMCCN PSYC 1113)

Studies the physiological, biological, and psychological factors which influence human behavior. Students are introduced to classic theorists and theories which attempt to explain human behavior and personality development. Human emotions, motivation, stress, anxiety, neurotic, and psychotic behavior are studied in this course. Emphasizes effective life adjustment in a complex, paradoxical social environment.

### **PSY 211**

**THE PSYCHOLOGY OF ADJUSTMENT,**  
(SATISFIES SOCIAL SCIENCE REQUIREMENT)  
– Cr. 3 HRS

Explores concepts of mental health and illness, adjustment problems and processes. Prerequisite: PSY101.

### **PSY 222**

**DEVELOPMENTAL PSYCHOLOGY – Cr. 3 HRS**  
(SATISFIES SOCIAL SCIENCE REQUIREMENT)

Psychological, biological, and social aspects of human development. Special emphasis is given to the physical cognitive, personality, social and moral characteristics of infancy, childhood, adolescence, and adulthood. Prerequisite: PSY 101 or permission of instructor.

### **PSY 299**

**SPECIAL PROBLEMS IN PSYCHOLOGY. – Cr. 3 HRS**

Prerequisite: permission of instructor.

## SOCIOLOGY

### **SOCI 1113**

**INTRODUCTION TO SOCIOLOGY. –  
CR. 3 HRS**

**(SATISFIES SOCIAL SCIENCE REQUIREMENT)  
(AREA IV NMCCN SOCI 1113)**

Studies the nature and structure of human societies. Stresses sociological methodology, terminology, key concepts, such as culture, socialization, social stratification, collective behavior and social instructions. Designed to give the student a sociological understanding of contemporary American society in a rapidly changing world.

### **SOC 201**

**CONTEMPORARY SOCIAL PROBLEMS. –  
CR. 3 HRS**

**(SATISFIES SOCIAL SCIENCE REQUIREMENT)**

Analyzes and studies contemporary social problems, their causes, possible solutions, and how they affect human behavior. The problem areas of crime, population, the ecological crises, racism, alienation, poverty, urbanization, and mass media are studied from the various sociological models or social problems. Prerequisite: SOC 101 or permission of instructor.

### **SOC 210**

**CONTEMPORARY MARRIAGE AND FAMILY.  
– CR. 3 HRS**

**(SATISFIES SOCIAL SCIENCE REQUIREMENT)  
(AREA IV NMCCN 2213)**

Studies the nature and the forces that are influencing contemporary family life. Many of the aspects of marriage covered are: male and female role socialization, courtship, mate selection, legal aspects, practical economic considerations, sexual development and adjustment, conflict and adjustment in marriage, divorce, child rearing, and the nature of love. Prerequisite: SOC 101 or permission of instructor.

### **SOC 299**

**SPECIAL STUDIES IN SOCIOLOGY. –  
CR. 1-3 HRS**

Prerequisite: permission of instructor.

## GEOGRAPHY

### **GEO 122**

**ECONOMIC GEOGRAPHY – CR. 3 HRS  
(SATISFIES SOCIAL SCIENCE REQUIREMENT)  
(AREA IV )**

Concentrates on economic patterns. The course introduces several theories of economic activity: general theory of land use, agricultural location theory, plant location theory, central place theory; cultural-economic relationships are stressed. Recommended for Business majors. No prerequisite.

### **GEO 150**

**HUMANS AND THE ENVIRONMENT. –  
CR. 3 HRS**

**(SATISFIES SOCIAL SCIENCE REQUIREMENT)  
(AREA IV NMCCN 1213)**

Studies the natural environment and its transformation by human activities. An interdisciplinary study, combining principles and information from the natural sciences (Physical Geography), and from Human Geography to present a general understanding of how nature functions and how humans are a modifying force. No prerequisite.

### **GEO 250**

**GEOGRAPHY OF SOUTH AMERICA. –  
CR. 3 HRS**

**(SATISFIES SOCIAL SCIENCE REQUIREMENT)**

Surveys the principal geographic regions of South America. The physical and cultural landscapes are emphasized along with contemporary social, political, and economic issues. Prerequisite: GEO 122, 150 or permission of instructor.



## ANTHROPOLOGY

### **ANT 150**

#### **INTRODUCTION TO CULTURAL**

#### **ANTHROPOLOGY. – Cr. 3 HRS**

**(SATISFIES SOCIAL SCIENCE REQUIREMENT)  
(AREA IV NMCCN ANTH 2113)**

Explores the basic principles of cultural anthropology from the origin through the evolution of culture, with special emphasis on the nature of kinship, religious, economic, and political systems.

## BUSINESS ADMINISTRATION

### **BUS 111**

#### **INTRODUCTION TO BUSINESS. – Cr. 3 HRS**

Surveys the entire field of business, intended for first-year college students. Concepts of business organization, structure, and decision-making processes. Explores areas of specialization and career opportunities in the business world.

### **BUS 201**

#### **PRINCIPLES OF MANAGEMENT. – Cr. 3 HRS**

Presents managerial functions as they apply to business. Planning, organizing, staffing, directing, and controlling the functions of management are examined in depth.

### **BUS 202**

#### **BUSINESS LAW – Cr. 3 HRS**

Investigates the basic principles of tort law and their application to business problems. Includes: court system, legal procedures, law of contracts, agency, employment, negotiable instruments, personal property, and sale of goods.

### **BUS 204**

#### **BUSINESS WRITING. – Cr. 3 HRS**

Explores the theory and practice of business writing emphasizing style, structure,

and format in letters, memoranda, resumes, and reports. Students successfully completing this course may not enroll in ENG 218. Prerequisite: ENGL 1113. This course can satisfy three of the six semester hour core English requirements.

### **BUS 213**

#### **PRINCIPLES OF ACCOUNTING I. – Cr. 3 HRS**

Introduces fundamental accounting principles and procedures. Examines present accounting theory and practices with applications to the sole proprietorship.

### **BUS 214**

#### **PRINCIPLES OF ACCOUNTING II. – Cr. 3 HRS**

Continues BUS213. Application of theory and practice to partnership and corporations, manufacturing operations, cost determination, financial statement analysis and Federal tax considerations. Prerequisite: BUS 213.

### **CIS 101**

#### **COMPUTER CONCEPTS I. – Cr. 3 HRS**

Introduces the keyboard and principle components of the word processing application on the microcomputer. Emphasis is on typing using the touch typing method through typing letters, classroom assignments and term papers. It is a self-paced course. Lab fee required.

### **CIS 117**

#### **COMPUTER CONCEPTS II – Cr. 3 HRS**

Studies the impact of computers on society, including the development of information processing and program development. Microcomputers are used for the teaching of various productivity applications such as word processing, database management, spreadsheets, desktop publishing and the Internet. Lab fee required.

## **CIS 217**

### **INTRODUCTION TO PROGRAMMING, WEB DESIGN AND MULTIMEDIA. – Cr. 3 HRS**

Introduces basic programming concepts and applications. Introduces the role of the microcomputer in a business setting. Applications will be used to enhance the development, promotion and marketing of business activities and information exchange. Prerequisite: CIS117 or instructor approval.

## **ECON 2113**

### **PRINCIPLES AND PROBLEMS OF MACROECONOMICS. – Cr. 3 HRS (SATISFIES SOCIAL SCIENCE REQUIREMENT) (AREA IV NMCCN ECON 2113)**

Describes the economic system governing the productive apparatus; while identifying underlying social and economic goals, measuring and determining national income, employment, and inflation; and introducing fiscal and monetary policy analysis. No prerequisite.

## **ECON 2123**

### **PRINCIPLES AND PROBLEMS OF MICROECONOMICS. – Cr. 3 HRS (SATISFIES SOCIAL SCIENCE REQUIREMENT) (AREA IV NMCCN ECON 2123)**

Introduces microeconomic theory. Emphasizes consumer behavior, production decisions, theories of value, price determination, and demand and supply relationships in the marketplace. No prerequisite.

## **MKT 201**

### **PRINCIPLES OF MARKETING – Cr. 3 HRS**

Introduction to basic concepts and principles of marketing management. Topics include market identification and analysis, product planning and development; and pricing, promotion, and distribution strategies.

## **CRIMINAL JUSTICE**

## **CJU 101**

### **INTRODUCTION TO CRIMINAL JUSTICE. – Cr. 3 HRS (SATISFIES SOCIAL SCIENCE REQUIREMENT)**

Reviews and examines the history and contemporary issues in all aspects of the criminal justice system. Areas examined include crime causation, constitutional law, administration of justice, policing and police issues, court procedures and certain elements involving corrections. NOTE: CJU 101 or instructor's permission is prerequisite for all higher level CJU courses. Not open to high school students.

## **CJU 102**

### **CRIMINAL INVESTIGATION. – Cr. 3 HRS**

Introduces the student to the principles of scientific crime detection, identification and management of evidence, interviewing, report writing and crime scene management. Begins with an historical overview of criminal investigation and examines specific methods of investigation for most felonious offenses. Prerequisite: CJU 101 or instructor's permission. Note: not open to high school students. (Does not satisfy social science requirement.)

## **CJU 201**

### **CORRECTIONS – Cr. 3 HRS**

Introduces the student to an overview of the correctional system. Begins with an historical review and includes an analysis of contemporary correctional systems. Includes sentencing, probation and parole, incarceration, prison issues, and community corrections. Prerequisite: CJU 101 or instructor's permission. Note: not open to high school students. (Does not satisfy social science requirement.)

## **CJU 202**

### **AMERICAN POLICING. – Cr. 3 HRS**

A review and analysis of contemporary methods of policing and current issues and problems associated with law enforcement at all levels of government. Subjects will include: community policing, police ethics, police supervision, specialized policing, and job testing and interviewing. Prerequisite: CJU 101 or instructor's permission. Note: Not open to high school students. (Does not satisfy social science requirement.)

## **CRIJ 2253**

### **INTRODUCTION TO TERRORISM – Cr. 3 HRS**

An introduction to the forces and processes of terrorism. Studies the use of terror in history; understanding the behavioral characteristics and motivations of a terrorist and an examination of the root causes of terrorism. Prerequisite: CJU 101 or instructor's permission. Not open to high school students (Does not satisfy social science requirement.)

## **LEADERSHIP DIVISION**

### *Daniels Distinguished Speakers Series*

The Leadership Division hosts speakers of national acclaim to address the Corps of Cadets on topics. Typically, these presentations are mandatory, but are not credit bearing.

## **HUM 110**

### **(SEE HUMANITIES DIVISION) – Cr. 3 HRS (SATISFIES HUMANITIES REQUIREMENT)**

Integrates character education and moral development theory within the context of leadership. Stresses critical thinking through readings and films on fictional, historic, and contemporary leaders dealing with moral and ethical issues.

## **LEAD 2813**

### **ROPES COURSE – Cr. 3 HRS**

This course is designed to provide the basic skills and knowledge required to facilitate a ropes course as part of an outdoor education facility. The course will also help develop skills in instructional techniques, group debriefing skills, safety and rescue and equipment maintenance

## **LIBRARY DIVISION**

## **DEPARTMENT OF ACADEMIC ADVISING AND COLLEGE PLACEMENT**

### **ACT 500 ACT REVIEW Cr. 0 HR**

Prepares students Scholastic Aptitude Test (SAT) or the American College Test (ACT). Program is designed to gain through practice experience with the testing approaches. Covers verbal areas of synonyms, antonyms, analogies, vocabulary, syntax, and grammar as well as reading in social sciences and natural science. Includes a complete series of problems in mathematics, including algebra and geometry. Grade: P/F for transcript, not included in GPA.

## **DIVISION OF HEALTH, PHYSICAL EDUCATION AND RECREATION**

The Health, Physical Education, and Recreation Department offers academic major preparations in six lower division concentrations. These concentrations include Health, Exercise Science, Athletic

Training, Sport Science, Parks and Recreation, and Performance Psychology.

### **HPER 1113**

#### **HEALTH AND WELLNESS – Cr. 3 HRS**

Students will develop a theoretical and practical knowledge of all components of health and wellness as related to mental, emotional, physical, social, environmental and consumer health.

### **HPER 1213**

#### **INTRODUCTION AND FOUNDATIONS OF PHYSICAL EDUCATION – Cr. 3 HRS**

Introduction to the foundations of the discipline of physical education while exploring personal career choices.

### **HPER 1233**

#### **INTRODUCTION TO PHYSICAL THERAPY – Cr. 3 HRS.**

Introductory course exploring the foundations of the profession of physical therapy. Course consists of four modules appropriate for prephysical therapy students.

### **HPER 1253**

#### **SPORTS SAFETY, FIRST AID AND EMERGENCY CARE – Cr. 3 HRS**

This course will cover policies, practices, and issues related to safety in sports, first aid and emergency care.

### **HPER 1313**

#### **PERFORMANCE NUTRITION – Cr. 3 HRS**

This course is designed to provide physically active people and competitors with factual information. Information on essential nutrients, metabolism during exercise and specific problems experienced by athletes or highly active people.

### **HPER 1322**

#### **MEDICAL TERMINOLOGY IN ATHLETIC TRAINING – Cr. 2 HRS**

This course is intended to assist those studying in the fields of medicine and

health care by learning a word building system for defining, using, spelling and pronouncing medical words. Course designed for those interested in athletic training.

### **HPER 1413**

#### **PERFORMANCE PSYCHOLOGY – Cr. 3 HRS**

This is a “hands-on” course oriented toward helping an individual develop the psychological skills necessary to become the best you can be. Student will develop a mental skills training program.

### **HPER 1513**

#### **INTRODUCTION TO ATHLETIC TRAINING – Cr. 3 HRS**

Covers the evaluation and treatment of athletic injuries with athletic training techniques and uses of support materials to prevent athletic injuries. Covers the evaluation, treatment, and prevention of these injuries, including use of supporting apparatus, hydrotherapy, physiotherapy, bandaging, and massage. This course is an entry level class for Athletic Training Education.

### **HPER 1613**

#### **FITNESS FOR HEALTH AND SPORTS – Cr. 3 HRS**

Lecture course with selected activity and learning experiences regarding principles and methods for developing and maintaining physical fitness.

### **HPER 1813**

#### **INTRODUCTION TO PARKS AND RECREATION. – Cr. 3 HRS**

Gives the fundamentals involved in the development of the field of recreation, designed to provide students with a knowledge of Federal, State, and local recreation programs and practices in the activities included. Presents information on the history, philosophy, scope and value of parks and recreation services.

**HPER 1913****INTRODUCTION TO SPORTS MANAGEMENT –  
CR. 3 HRS**

This course will provide the student with an understanding of the conceptual frameworks used in sport management and acquaint the student with the sports industry.

**HPER 2323****GENERAL MEDICAL CONDITIONS –  
CR. 3 HRS**

This course will provide the prospective athletic trainer with the knowledge and skill necessary to recognize, manage, and refer the general medical conditions and disabilities in athletes and physically active individuals.

**HPER 2413****MOTIVATION & LEADERSHIP PSYCHOLOGY –  
CR. 3 HRS**

Designed to help physical educators, coaches, recreation specialists, and others interested in human motivation to more effectively understand this complex topic and to use that knowledge to help enhance the performance of themselves, their students, athletes or clients/consumers.

**HPER 2353****SPORTS INJURIES – CR. 3 HRS**

This course provides students with an intensive, thorough study of orthopedic evaluation techniques used within the clinical and on-field environments to assess athletic related injuries. Normal joint kinematics and subsequent pathomechanics are also discussed.

**HPER 2513****THEORY OF LEADERSHIP AND COACHING –  
CR. 3 HRS**

Comprehensive introduction to the art and science of coaching and leadership. Introduction to positive coaching philosophy: principles of coaching; and sport ped-

agogy, physiology, medicine and management.

**HPER 2521****COACHING AND LEADERSHIP PRACTICUM –  
CR. 1 HR**

Course provides the resources for leadership and coaching development. Time management, analytical skills, leadership, physical fitness and performance psychology are topics in the course.

**HPER 2542****THEORY AND TECHNIQUES OF ATHLETICS –  
CR. 3 HRS**

Course is designed to expose students to the fundamental motor skills involved in running, jumping, tumbling and throwing.

**HPER 2552****SPORTS OFFICIATING – CR. 2 HRS**

This course provides a working knowledge of team sports rules. The course includes a familiarization of the rules, regulations and proper protocol to follow as an athletic official. State certification will be available.

**HPER 2712****THEORY AND TECHNIQUE OF AQUATICS –  
CR 2 HRS**

This course is designed to expose students to the fundamental skills involved in swimming, diving, and water survival.

**HPER 2733****WATER SAFETY INSTRUCTION – CR 3 HRS**

Gives the student the skills and knowledge necessary to teach Red Cross Swimming courses. Students who satisfactorily complete the course are certified as Red Cross Water Swimming Instructors. They will learn today's lifeguard and CPR techniques. All students must satisfactorily pass prerequisite water test.

**HPER 2913**  
**ATHLETIC CLINICAL PRACTICUM –**  
**CR. 3 HRS**

Instruction, practice, and application of clinical proficiencies as established by the NATA Education council. Prerequisite

**ACTIVITY CLASSES**  
**CR 1 HR EACH**

These courses are designed to provide a technical based for developing the skills and strategies that provide a life long participation in the specified sport or activity. A student may take up to four 1.0 credit classes for graduation credit, credit beyond 4.0 hours does not count for graduation or graduation honors/awards.

**PHEA 1051**  
**STRENGTH AND CONDITIONING I**

**PHEA 1111**  
**RACQUET SPORTS**

**PHEA 1121**  
**GOLF**

**PHEA 1131**  
**SERVICE ACADEMY PREPARATION**  
**PHYSICAL TRAINING**

**PHEA 1141**  
**SERVICE ACADEMY PREPARATION**  
**PHYSICAL TRAINING II**

**PHEA 1151**  
**BOWLING**

**PHEA 1171**  
**TENNIS**

**PHEA 1211**  
**SWIMMING**

**PHEA 1311**  
**SELF DEFENSE I**

**PHEA 1351**  
**FENCING**

**PHEA 1411**  
**DYNAMIC FIT-NESS I**

**PHEA 1511**  
**VARSITY SPORTS (REPEATABLE)**

- PHEA 1511B – BASEBALL;**
- PHEA 1511F - FOOTBALL;**
- PHEA 1511G – GOLF;**
- PHEA 1511K - BASKETBALL;**
- PHEA 1511T – TENNIS;**
- PHEA 1511V - VOLLEYBALL**

**PHEA 1911**  
**METHODS OF SPORT**

**PHEA 2051**  
**STRENGTH AND CONDITIONING II**

**PHEA 2311**  
**SELF DEFENSE II**

**PHEA 2411**  
**DYNAMIC FITNESS II**

**MILITARY SCIENCE**

**ROTC PROGRAM**

New Mexico Military Institute offers a two-year Basic Course or Advanced Course of Senior ROTC in the college. The curriculum of the college program is administered by the Military Science Department as prescribed by the Department of the Army. Credit for each course of instruction is transferable among the institutions offering Army ROTC. All cadets are required to participate in the ROTC program, in drills, parades, reviews, ceremonies, inspections, and practical training

exercises germane to the ROTC program. Cadets are required to enroll in the appropriate ROTC class (MS 1/3) in their first year of attendance.

In addition to Military Science (MSL) courses, requirements for the Army commission include completion of an undergraduate course in military history. This has to be taken prior to accessing on active duty at the completion of the four-year degree. Military Junior Colleges (MJC) are not required to finish this prior to commissioning. The Professor of Military Science (PMS) would prefer that ROTC contract cadets finish military history at NMMI if possible. Should scheduling conflicts arise or academic workload be such that taking one of these will head a cadet toward academic failure, then certainly using the exception allowed for MJC's is in order.

### ADVANCED COURSE ARMY ROTC

*General:* The Early Commissioning Program (ECP) offered at NMMI is one of only five ECP options in the nation. Officer training and ROTC curriculum is comprised of three phases. The Basic Officer Leadership Course (BOLC), Phase I includes Pre-Commissioning Training (ROTC). BOLC II is a six-week course conducted at one of two US Army posts that occurs after lieutenants' graduate from their four-year university. The final phase (Phase III) is the Officer Basic Course where lieutenants learn their specific military skill before additional training opportunities or before joining

their units. The Advanced Course at New Mexico Military Institute permits a junior college graduate to complete all the requirements for a U.S. Army commission and, unique to the MJC program, be commissioned in only two years. The program consists of the following major phases:

**Leader's Training Course (LTC):** LTC is a 28 day course operated by the U.S. Army at Fort Knox, Kentucky, during the summer preceding entrance at NMMI as a college freshman. Applications for attendance must be made to the PMS prior to April 15 to permit adequate time for processing. Graduation from LTC qualifies cadets to enter the Advanced Course (MSL III)

In accordance with Army regulations and with the specific approval of the PMS, it is possible to waive the LTC requirement for participation in the Advanced Course program based on three or more years of prior accredited JROTC training or for completion of basic training with any branch of the Armed Forces.

**The Leader Development and Assessment Course (LDAC) (Warrior Forge):** Warrior Forge is a 33-day course operated by the U.S. Army at Fort Lewis, Washington. Attendance is scheduled for advanced course cadets during the summer between the cadet's freshman and sophomore years. Cadets may also request airborne, air assault, or other Army special courses, to include two/three weeks with an

active Army unit for leadership training.

**Eligibility:** The program is open to all cadets who meet the following qualifications:

**Academics:** Have an acceptable score on either the ACT or SAT college entrance exam per ROTC guidelines, and be a high school graduate with a minimum GPA of 2.50 on the 4.0 scale or equivalent (C average).

**Age:** Be at least 17 years and able to complete the program before reaching age 30.

**Physical:** Pass a Department of Defense Medical Review Board (DODMERB) physical and successfully pass the US Army physical fitness test (APFT) consisting of push-ups/sit-ups and a two-mile run. To contract into the SROTC program, a cadet must score a minimum of 60 points each in all three events of the APFT.

**Loyalty:** Be an American citizen and pass a National Security Agency check.

**Obligation:** A cadet who desires to pursue a U.S. Army commission is required to sign a contract which guarantees the cadet a commission in the Army Reserve, provided he or she satisfactorily completes the prescribed

course of ROTC instruction. In turn, the cadet agrees to serve on active duty as a commissioned officer for four years plus four years with the Army Reserve. The cadet may also request the option of only three to six months of active duty and the remainder of the eight years with a reserve component.

**Monetary Considerations:** A contract cadet receives the following allowances: (Current dollar values are available from the NMMI Military Science Department).

**Stipend:** \$450 per month while enrolled in college during the cadet's freshman and \$500 in the sophomore years at NMMI (nine-month school year). Ten months/ year \$4500 /5000 total.

**Uniform Commutation:** Approximately \$2724 males/ \$3063 females.

**LTC:** Transportation is provided or travel expenses are reimbursed; food, clothing, and housing are provided, and the cadet is paid approximately \$800 for the four-week course.

**Warrior Forge:** Transportation is provided or travel expenses are reimbursed; food, clothing, and housing are provided, and the cadet is paid at the same rate (Approximately \$950) as a cadet at the U.S. Military Academy for the four-week period of summer training.



**Simultaneous Membership Program (SMP):** Cadets who are members of the National Guard or Army Reserve may be eligible for cadet status in pay grade E5 (242 per month) with the National Guard or Army Reserve while in the Advanced Course. These cadets attend monthly drills with their units or another unit at a time that does not interfere with ROTC or LDAC.

**Commissioning options:** Upon completion of MSIII and MSIV instruction (end of sophomore year), cadets will receive their commissions as second lieutenants in the U.S. Army Reserve. They then have up to three years to obtain their baccalaureate degree. During these three years, they are required to affiliate with National Guard or Army Reserve units as second lieutenants (earning time in service benefits and approximately \$5000 per year). They may apply for active duty when they receive their baccalaureate degree.

**Baccalaureate Degree:** Upon receipt of the baccalaureate degree, a reserve officer from the ECP program may enter active duty for four years or may request duty for training (three to six months) and subsequent reserve force duty. Though granted on a very limited basis, they may also apply for an educational delay to attend graduate school.

**Regular Army Commission:** Advance ROTC cadets in the upper half of their academic class and in the

upper third of their military class, possessing the required outstanding traits of leadership, character, and general military aptitude, may be designated a Distinguished Military Cadet (DMS). If they retain superior ratings until obtaining a baccalaureate degree, they can be designated a Distinguished Military Graduate (DMG).

### ARMY ROTC BASIC COURSE

College cadets not qualified for participation in the advanced course program (MSIII, MSIV) will be enrolled in the non-contract ROTC Basic Course (MSI, MSII). This program prepares cadets for advanced ROTC participation in their final two years of college. They take MSI and MSII at NMMI and MSIII and MSIV at a college of their choice. These cadets participate at NMMI in classroom instruction and may participate in practical field training exercises. There is no military obligation incurred by taking the basic course. (MSL 1 or 2)

### SERVICE ACADEMIES

The above programs may be taken by Service Academy aspirants while at the same time continuing Service Academy applications. The Army may release contract cadets from the ROTC program to enter any Service Academy. Senior ROTC cadets (college) are also eligible for nomination to the U.S. Military Academy without regard to quotas.

## ARMY ROTC SCHOLARSHIPS

The U.S. Army has authorized the PMS to process two-year Army ROTC scholarships. Competition for two-year scholarships is based upon academic performance, extracurricular and athletic activities and a telephonic or personal interview conducted by the ROTC Recruiting Operations Officer. The applicant must complete LTC in order to validate the two-year scholarship. Additionally, the PMS has scholarships that can be awarded based upon participation in Junior ROTC (PMS discretion) or completion of basic training. The scholarships provide for the payment of all tuition, most books and all fixed school laboratory fees for the scholarship period, or room and board. Scholarship winners must enroll in MS III and sign a contract (see obligations) if they desire to use their two-year ROTC scholarship.

### **MSL 101-102**

#### **MILITARY SCIENCE I. – Cr. 1-1 HR**

Introduces the organization and mission of the U.S. Army, leadership values, attributes, skills, and actions, map reading, communication, Small Unit tactics, customs and courtesies of the service.

### **MSL 151-152**

#### **MILITARY SCIENCE II. – Cr. 2-2 HRS**

Builds on the basics introduced in the MIL 111-112. Provides instruction in leadership, small unit tactics, and history of the U.S. Army, military briefings, and mission orders. Also includes problem solving, decision-making, and practical exercises.

### **MSL 201**

#### **MILITARY SCIENCE III. – Cr. 3 HRS**

##### **ADAPTIVE TEAM LEADERSHIP**

Challenges cadets to study, practice, and evaluate adaptive leadership skills as they are presented with challenging scenarios related to squad tactical operations. Cadets receive systematic and specific feedback on their leadership attributes and actions. Based on such feedback, as well as their own self-evaluations, cadets continue to develop their leadership and critical thinking abilities.

The focus is developing cadets' tactical leadership abilities to enable them to succeed at ROTC's summer Leadership Development and Assessment Course (LDAC). (ROTC Faculty Handbook, Feb 2006)

### **MSL 202**

#### **MILITARY SCIENCE III. – Cr. 3 HRS**

##### **LEADERSHIP UNDER FIRE**

Increasingly intense situational leadership challenges to build cadet awareness and skills in leading small units. Skills in decision-making, persuading and motivating team members when "under fire" are explored, evaluated, and developed. Aspects of military operations are reviewed as a means of preparing for the ROTC Leader Development and Assessment Course (LDAC). Cadets are expected to apply basic principles of the Law of Land Warfare, Army training, and motivation to troop leading procedures. Emphasis is also placed on conducting military briefings and developing proficiency in Garrison operation orders. Cadets are evaluated on what they know and do as leaders. (ROTC Faculty Handbook, Feb 2006)

**MSL 251****MILITARY SCIENCE IV. – CR. 3 HRS  
DEVELOPING ADAPTIVE LEADERS**

Develops cadet proficiency in planning, executing, and assessing complex operations, functioning as a member of a staff, and providing performance feedback to subordinates. Cadets assess risk, make ethical decisions, and lead fellow ROTC cadets. Lessons on military justice and personnel processes prepare cadets to make the transition to Army officers. MSL IV cadets analyze, evaluate, and instruct cadets at lower levels. Both their classroom and battalion leadership experiences are designed to prepare cadets for their first unit of assignment. They identify responsibilities of key staff, coordinate staff roles, and use situational opportunities to teach, train, and develop subordinates. Cadet objectives include the following: Leadership Values and Ethics Personal Development Officership Tactics and Techniques (ROTC Faculty Handbook, Feb 2006)

**MSL 252****MILITARY SCIENCE IV.-CR. 3 HRS**

Leadership in a Complex World Explores the dynamics of leading in the complex situations of current military operations in the contemporary operating environment (COE). Cadets examine differences in customs and courtesies, military law, principles of war, and rules of engagement in the face of international terrorism. They also explore aspects of interacting with non-governmental organizations, civilians on the battlefield, and host nation support. The course places significant emphasis on preparing cadets for their first unit of assignment. It uses case studies, scenarios, and “What Now, Lieutenant?” exercises to prepare cadets to face the complex ethical and practical demands of leading as commissioned officers in the United States Army. (ROTC Faculty Handbook, Feb 2006)

**MSL 205/255****MILITARY SCIENCE PHYSICAL TRAINING -  
CR. 1 HR****HIS 110****AMERICAN MILITARY HISTORY. –****CR. 3 HRS****(SATISFIES HUMANITIES REQUIREMENT)**

Surveys the development of American military institutions, policies, experiences, and traditions in peace and war from colonial times to the present. Emphasizes the relationship between military and other aspects of American society and the role of the military in the establishment, expansion, preservation, and development of the nation. This course may be taken in place of one of the MS I/II courses.



## **HIGH SCHOOL PROGRAM**

## High School Admission

New cadets are admitted only at the beginning of the Fall and Spring semesters.

**Third Class (senior)** - Must have a 2.25 cumulative grade point average for high school work, meet minimums on NMMI math/writing tests and be interviewed.

**Fourth Class (junior)** - Must have a 2.25 cumulative grade point average for high school work, meet minimums on NMMI math/writing tests and be interviewed.

**Fifth Class (sophomore)** - Must have a 2.50 cumulative grade point average for ninth grade work, meet minimums on NMMI math/writing tests and be interviewed.

**Sixth Class (freshman)** - Must have a 2.50 cumulative grade point average for seventh grade and eighth grade work, meet minimums on NMMI math/writing tests and be interviewed.

Foreign cadets whose primary language is not English must have a score of 55 or better on the written Secondary Level English Proficiency (SLEP) exam. In addition a minimum score of 27 on Section 1 (listening) and a score of 26 on Section 2 (reading) are expected.

Accepted applicants are placed in classes at New Mexico Military Institute in accordance with the number of credits earned at the time of initial enrollment. Progress through the curricular requirements is performance rather than time based. Curricular requirements will not be waived.

Based on the counsel of the academic advisor and on demonstrated academic ability, a high school junior or senior may be permitted to take college courses concurrently with high school courses, either for high school and/or college credit (coenrolled for high school and college credit) with permission of the high school Principal or Academic Dean.

### TRANSFER OF HIGH SCHOOL CREDITS

High school cadets may transfer credits at the time of admission from accredited programs provided that a passing grade was attained in each course transferred. Credits shall be transferable with no loss of value between schools. A grade of "TR" for satisfactorily completed classes will be recorded for credits awarded by nonaccredited educational entities. All high school graduates must complete high school graduation requirements prescribed by NMMI .

Those entering 9th grade who meet requirements for ninth grade in the seventh or eighth grade will be awarded credit for those courses and a grade of "TR" will be

recorded on the NMMI record for those courses.

Home-school cadets transferring to the Institute from a program accredited by a national/regional recognized accrediting agency will have credits accepted as transfer credit (letter grade). Lab science credits will be validated to ensure those courses were taken in a true lab format. Cadets will take the admissions tests to assist in determining appropriate placement.

Cadets entering from nonaccredited programs will have all coursework validated by the appropriate department for credit and courses not validated will not be given credit.

### ADVANCED PLACEMENT COURSE CREDIT

NMMI grants credit via Advanced Placement as specified in the following table. Several NMMI college courses which meet guidelines have been designated as NMMI high school Advanced Placement classes. The high school cadet, if physically enrolled in a college course for coenrolled high school credit is enrolled in the following: However, AP programs are under review/evaluation.

<u>AP EXAM</u>	<u>NMMI COURSE</u>	<u>HS COURSE</u>
Art History	ART131/ ART132	ART 081/ART082
Biology	BIO101/BIO102	BIO081/BIO082
Calculus AB	MTH195	MTH081
Calculus BC	MTH196	MTH082
Computer Science A		
Computer Science AB		
Chemistry	CHM111/CHM112	CHM081/CHM082
Economics Macro	ECN211	ECN081
Economics Micro	ECN212	ECN082
ENG Lang/Lit Comp		
Enviromental Science		
European History	HIS101/HIS102	HIS081/HIS082
French Language		
French Literature		
German Language		
Government & Politics, US	POL111	GVT081
Government & Politics, Comparative	POL214	GVT082
Human Geography		
International English Language		

Latin Literature

Latin: Vergil

Music Theory

Physics B

Physics C - Electrical

Physics C - Mech

Psychology

Spanish Language

Spanish Literature

Statistics

Studio Art

Studio Art: 2D Design

Studio Art: 3D Design

US History

World History

MUS140

PHY111/PHY112

PHY213/PHY214

PSY101

MTH241

ART105

ART101

ART 101/ ART110

HIS211/HIS212

HIS105/HIS106

MUS082

PHY081/PHY082

PHY083/PHY084

PSY081

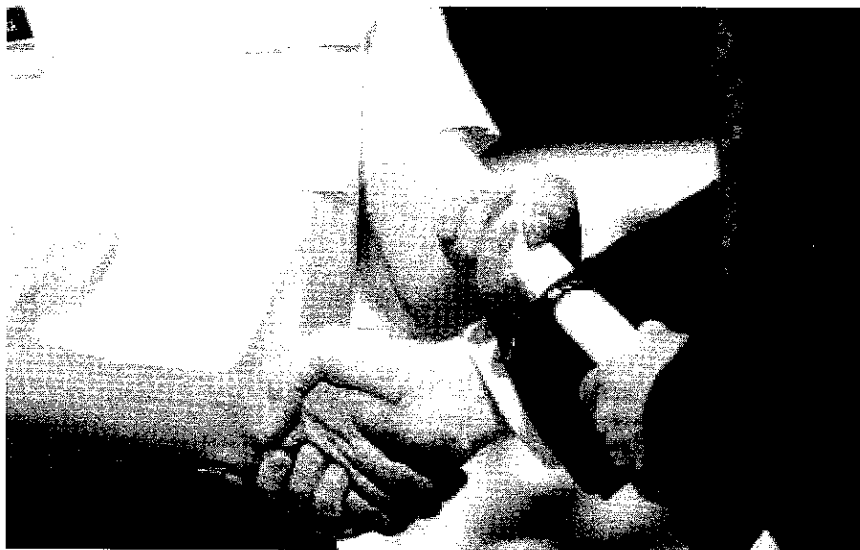
MTH083

ART085

ART083/ART084

HIS083/HIS084

HIS085/HIS086



## **GRADUATION REQUIREMENTS**

### **High School**

The NMMI high school curriculum is college preparatory in nature. Twenty-three units of credit are required for graduation. NMMI graduates must successfully pass NMMI English courses 4A and 4B and a minimum of one year of NMMI mathematics at the Algebra 2 level or above. Additionally, the American College Test (ACT) is a requirement for the high school diploma. A cadet whose clear intention is to attend a college or university, which requires the Scholastic Aptitude Test (SAT) for admission may elect to substitute that test for the ACT with the approval of the Academic Dean. A cadet who is not a citizen of the United States and whose primary language is not English may elect to substitute the Test of English as a Foreign Language (TOEFL) for the ACT with the approval of the high school Principal.

#### Communication Skills/Modern Language - Cr. 2 ½ units

Successfully completing a semester course generates ½ unit. Two and one-half units to include 2 units in one foreign language and ½ unit in communication skills. An entering 5th classman with a language not offered by NMMI will only be required to take one additional unit of a language and ½ unit communications. Speech, Myths and Folktales, Current Events, Introduction to Drama, and similar courses as well as the third year of a language meet this ½ unit requirement but do not substitute for the English requirements.



### English 1, 2, 3, and 4. - Cr. 4 units

Successfully completing a semester course generates  $\frac{1}{2}$  unit. Four units are required to include English 4A and 4B. Mass communication or similar English courses do not meet the English requirements.

### Mathematics. - Cr. 3 units

Successfully completing a semester course generates  $\frac{1}{2}$  unit. Three units are required; these are MTH 021-022 Algebra I; MTH 033-034 Algebra II; and any two semesters of the following: MTH 037-038 Geometry; one of MTH 042 Trigonometry or MTH 048 Precalculus; or MTH 043-044 Geometry/Trigonometry/Algebra III. Prospective NMMI graduates must successfully pass one year of NMMI mathematics at the Algebra 2 level or above. The one year requirement may be satisfied through a challenge exam.

### Science. - Cr. 3 units

Successfully completing a semester course generates  $\frac{1}{2}$  unit. Two Three full units of a laboratory science are required. Two of these units must be two-semester course sequences in biology, chemistry, physics, or earth science. The third unit may be one of the two-semester sequences or semester courses which have a science sequence as a prerequisite. General science or physical science do not meet NMMI's science requirement.

### Social Science. - Cr. 3 units

Successfully completing a semester course generates  $\frac{1}{2}$  unit. Three units are required. These include one unit of world history/geography; one unit of U.S. history;  $\frac{1}{2}$  unit of economics; and  $\frac{1}{2}$  unit of government. The semester course in government will meet the government requirement; this course is normally taken during the junior or senior year in high school.

### Leadership Education. - Cr $\frac{1}{4}$ unit per semester

Each LET course generates  $\frac{1}{4}$  unit. One-half unit is required to meet the overall 23-unit graduation requirement; however, enrollment in LET courses taught in the JROTC program is required in each semester of attendance at NMMI.

### Physical Education. - Cr. $\frac{1}{4}$ unit per semester

Completing one semester PHE activity generates  $\frac{1}{4}$  unit of credit. One-half unit is required for graduation; however, a cadet must enroll in a physical education activity each semester of attendance. One semester of Health Education is required.

### Computer Literacy. - Cr. $\frac{1}{2}$ unit

One-half unit is required. The course, Computer Concepts II (CC I does not meet this requirement), is recommended. Other computer science courses may be substituted for Computer Concepts with the approval of the high school Principal.

### Fine/Practical Arts. - Cr. ½ unit

One-half unit of a fine or a practical art is required.

### Electives. - (As needed)

In addition to the requirements listed above, elective courses may be taken to complete the 23-unit graduation requirement. Successful completion of one semester of band, PHE, LET, or chorus at New Mexico Military Institute generates ¼ unit.

## High School Residence/Course Completion Requirements

A third class new cadet must earn a minimum of four units credit at NMMI and spend two semesters in residence. (Note: Successful completion of NMMI English courses 4A & 4B and a minimum of one year of NMMI mathematics at the Algebra 2 level or above are required for high school graduation.)

A maximum of one unit credit earned after leaving the Institute in good standing may be submitted to fulfill graduation requirements. The appropriate academic division head and the Academic Dean must approve post-NMMI courses to meet graduation requirements.

## High School Correspondence/Summer School/Distance Learning Standards

Correspondence/online courses must meet the following criteria:

- Courses taken via correspondence/summer school/distance learning must be validated by the student and the advisor in the cadet's graduation plan with the high school principal and have written permission prior to enrollment. This will allow a cadet to take advanced courses to graduate early or make up failures. A cadet may not take a course to avoid taking an NMMI course.
- While enrolled at NMMI, a cadet must take the NMMI core course requirement to graduate from NMMI. If the cadet completes the NMMI course, the cadet may repeat the course (except for capstone courses) via distance learning/correspondence with permission to improve their grade. However, this may not take place during the academic year except for the last (senior) semester at NMMI.
- Cadet must take the course at NMMI if offered
- If the cadet cannot schedule the required class in the last semester of the graduation year, the cadet can request a correspondence or online course
- Online courses must have a mandatory valid login.
- The number of transfer courses from summer school and correspondence cannot exceed two (2) units earned while enrolled at NMMI.

- Correspondence courses may not be taken during the academic semester that a cadet is enrolled in or has withdrawn from a parallel NMMI course.
- Private tutoring or home schooling from a non-accredited source will not be recognized as a source for credit.

The length of time it will take an entering cadet to satisfy the requirements of the high school diploma will depend on the number of acceptable units submitted on entrance. An entering Fifth Classman (sophomore) will have three years to accumulate the required units, whereas an entering Third Classman (senior) may find that completion will take longer than a year's time. This fact must be recognized by all those admitted who expect to earn a high school diploma. However, a cadet in the Third Class may, with the Dean's approval, take a maximum of eleven semester hours credit at the college level.

Thus, a cadet may satisfy the requirement for the high school diploma while enrolled in college subjects.

Failure to earn a grade point average (GPA) of at least 2.00 for courses taken at NMMI may be considered by the Admissions Board as grounds for refusal to admit a cadet to the Second Class (college freshman).

### Normal Class Load

The academic load for a high school cadet is five academic solids plus leadership training and physical education. The minimum high school academic load is four academic solids plus leadership training and physical education. Cadets requesting a minimum load must have approval of the Associate Dean and written permission from their parents. Cadets carrying less than a full class load are not eligible for Superintendent's or Deans' List.

### Overloads

Cadets with a 3.0 GPA or above from the previous grading period may take more than five solids upon the recommendation of their academic advisor. The Vice Dean/High School Principal must authorize more than five solids for high school cadets. Overloads are not recommended for a cadet with a GPA of less than 3.0 from the previous semester grading period. Upon the cadet's request and with the recommendation of the academic advisor, an overload may be authorized if the cadet's schedule (academic, athletic, extra-curricular) suggests that there is reasonable probability that the cadet can successfully handle the overload.

## Scholastic Tests

All high school cadets are required to take the American College Testing examination (ACT) as a graduation requirement. A cadet who is not a citizen of the United States and whose primary language is not English may elect to substitute the Test of English as a Foreign Language (TOEFL) for the ACT with the approval of the high school Principal. These tests are administered by the Student Assistance Center on national test dates. The ACT should be taken in the second semester of the junior year and/or the first semester of the senior year. Colleges require not only a transcript of one's academic record, but also ACT or SAT scores. The Student Assistance Center also administers other academic and placement tests such as the PLAN Test required in the sophomore year; the PSAT (Preliminary Scholastic Aptitude Test) required in the fall of the junior year; the SAT, and reading and math placement tests for new cadets.

## College courses taken for High School credit

High school cadets who successfully complete college courses for high school credit will receive college credit for these courses. This credit carries a grade, which affects the Grade Point Average on the college transcript. A high school cadet may take college courses for college credit only, college credit and high school credit, or co-enrolled credit. However, the college course will always create a separate college transcript at NMML. An high school cadet should have at least a 3.00 GPA prior to enrolling.



## HIGH SCHOOL COURSES

The NMMI high school is accredited by the North Central Association Commission on Accreditation and School Improvement as a college preparatory high school. The following courses are the total courses offered, however, not all courses are offered each semester. With few exceptions, NMMI high school courses are college preparatory in nature. To better reflect the college preparatory nature of the high school classes, the following course definitions were adopted effective school year 1997-98:

**NMMI College Preparatory Courses (CP):** NMMI high school courses (primarily 1/2 credit courses) which meet the NMMI high school graduation requirements for their department and are approved as college preparatory by the Curriculum and Standards Committee and NMMI college courses

which are taken for high school credit and are approved for CP designation by the Curriculum and Standards Committee

**NMMI Honors Courses (H):** NMMI high school courses (1/2 credit) which exceed the NMMI high school graduation requirements in their particular division and which have been so designated by Curriculum and Standards, and NMMI college courses which are taken for high school credit and are approved for (H) designation by the Curriculum and Standards Committee

**Advanced Placement Courses (AP):** High school courses (co-enrolled college courses) which meet the nationally recognized Advanced Placement guidelines of the College Board and which have been so designated by Curriculum and Standards.

NMMI does not “weight” either Honors or Advanced Placement grades.

**DIVISION**  
**OF**  
**HUMANITIES**

**ENGLISH**

*NOTE: NMMI graduates must successfully pass NMMI English 4A and 4B*

**ENG 011**  
**ENGLISH 1A. (CP) - Cr. ½ UNIT**

Improves and develops the student’s skills in reading, writing, listening, speaking and critical thinking through the study of the language and its structure, composition, and literature. Includes the study of vocabulary, spelling, grammar, and composition in addition to reading from the literature book and two outside readings. Emphasizes the expression of ideas through oral discussion and writing.

**ENG 012**  
**ENGLISH 1B. (CP) - Cr. ½ UNIT**

Continues English 1A. Improves and develops the student skills in reading, writing, listening, speaking, and critical thinking through the study of the language and its structure, composition, and literature. Includes the study of vocabulary, spelling, grammar, and composition in addition to readings from the literature book and two outside sources. Emphasizes the expression of ideas through oral discussion and writing.

**ENG 021**  
**ENGLISH 2A. (CP) - Cr. ½ UNIT**

Provides the first half of an integrated program with emphasis on specific writing assignments and development of communication skills, vocabulary development, extensive writing practice.

**ENG 022**  
**ENGLISH 2B. (CP) - Cr. ½ UNIT**

Continues English 2A with emphasis on thematic approach to literature, critical writing, continued writing practice.

**ENG 025**  
**MYTHS AND FOLKTALES OF THE WORLD.**  
**(CP) - Cr. ½ UNIT**

A comparative study of myths and folktales from many cultures, with emphasis on critical thinking and on finding multicultural connections. Requirements include two narrative essays and one research project involving an oral presentation. Satisfies a Communication requirement. A high school elective.

**ENG 031**  
**ENGLISH 3A (CP) - Cr. ½ UNIT**

Provides the first half of an integrated program with specific emphasis on the development of the whole composition, library work, American literature, vocabulary development.

**ENG 032**  
**ENGLISH 3B. (CP) - Cr. ½ UNIT**

Continues English 3A with emphasis on American literary heritage and critical analysis of literary works, continued writing practice.

## **ENG 041**

### **ENGLISH 4A. (CP) - Cr. ½ UNIT**

Offers an integrated program with specific emphasis on English literature, language and logic, preparation for college entrance exams, refinement of writing skills through extensive writing practice, documented library paper, vocabulary development. NMMI graduates must successfully pass NMMI English 4A & 4B.

## **ENG 042**

### **ENGLISH 4B. (CP) - Cr. ½ UNIT**

Continues English 4A with specific emphasis on English literature, a critical paper, and continued writing practice. NMMI graduates must successfully pass NMMI English 4A & 4B.

## **ENG 053**

### **LITERARY MASTERPIECES (CP) – Cr ½ UNIT SUMMER PROGRAM.**

This course involves practice in reading, writing, and critical thinking. After reading select novels or dramas, students will compose critical essays to demonstrate their mastery of this literature. The critical essays must demonstrate command over grammar, usage, and vocabulary in the critical papers. Essays must be complete and corrections made before grade gets assigned.

## **ENG 055/056**

### **SPECIAL TOPICS IN BRITISH FANTASY (CP) – Cr ½ UNIT SUMMER PROGRAM.**

On-line course involving practice in reading, writing and critical thinking using popular British authors C.S. Lewis or J.R.R. Tolkien. After reading select novels, student will compose critical essays to demonstrate mastery

of the literature. Essays must show command over grammar, usage, and vocabulary in the critical papers. Essays must be complete and corrections made before grade is assigned.

## **COM 031**

### **SPEECH. (CP) - Cr. ½ UNIT**

Concentrates on the basic principles of speech, practical speech activities and group discussion.

## **COM 048 - 049**

### **PRACTICUM IN YEARBOOK PRODUCTION. - Cr. ¼ UNIT**

Produces through a workshop the school annual, the Bronco. Each may be repeated for a total of ½ unit. Prerequisite: permission of the instructor.

## **COM 068-069**

### **THEATER PRODUCTION (CP) - Cr. ¼ UNIT**

Provides exercises and workshops in theater skills, stagecraft and technical support or production. Each may be repeated for a total of ½ unit.

## **RDG 053-054**

### **READING/STUDY SKILLS.- Cr. ¼ - ¼ UNIT**

Required for students whose placement test scores fall below two grade levels. Course is one or two semesters, depending on progress, with emphasis on basic reading skills and study methods.

## **MODERN LANGUAGES**

For credit in high school foreign language courses offered at NMMI, cadets may substitute departmental challenge exams with scores of "B" or

higher, or they may substitute Foreign Language Subject Matter CLEP Tests (Level 1 with a mean scale score of "B" or higher for foreign language years 1 and 2 - and Level 2 with a mean scale score of "B" or higher for foreign language years 3 and 4.) Those successfully completing a departmental challenge or the appropriate CLEP test will be awarded a grade of "TR." Such credit will not affect grade point averages nor will it satisfy minimum course load requirements. High school foreign students may transfer their secondary level native language courses and be awarded up to 2.0 units of high school foreign language credit.

### LANGUAGE LABORATORY

Use of media equipment and software is integrated into each high school language course. A lab fee will be charged.

#### **GER 011-012**

**GERMAN 1A AND 1B. (CP) - Cr. ½ -½ UNIT**

Stresses the acquisition of basic skills, listening, speaking, reading, and writing, and introduces the culture of German speaking countries. The essentials of grammar are explained and practiced.

**GER 021-022 - GERMAN 2A AND 2B. (CP) - Cr. ½ -½ UNIT**

Continues the study of grammar, basic skills and culture. Introduces the development of skill in composition and conversation.

#### **GER 031-032**

**GERMAN 3A AND 3B. (HONORS) - Cr. ½ -½ UNIT**

Stresses intermediate reading and composition. Readings by authors in German serve as a basis for the study of culture and conversation. Prerequisite: successful completion of GER 022 (B or higher) or instructor permission.

#### **GER 041-042**

**GERMAN 4A AND 4B. (HONORS) - Cr. ½ - ½ UNIT**

Continues the study of advanced grammar. Offers reading and discussion of current events, geography, history, German literature, and culture which serve as the basis for discussion. Prerequisite: successful completion of GER 032 or instructor permission.

#### **SPN 011-012**

**SPANISH 1A AND 1B. (CP) - Cr. ½ - ½ UNIT**

Stresses the acquisition of basic skills, listening, speaking, reading, and writing and introduces culture of Spanish speaking countries. The essentials of grammar are explained and practiced.

#### **SPN 021-022**

**SPANISH 2A AND 2B. (CP) - Cr. ½ -½ UNIT**

Continues the study of grammar, basic skills, and culture. Introduces the development of skill in composition and conversation.

#### **SPN 031-032**

**SPANISH 3A AND 3B. (HONORS) - Cr. ½ -½ UNIT**

Stresses advanced grammar, reading and composition. Short stories by Spanish and Spanish-American



authors serve as a basis for the study of culture and conversation. . Prerequisite: successful completion of SPN 022 (B or higher) or instructor permission.

### **SPN 041-042**

**SPANISH 4A AND 4B. (HONORS) - CR. ½ -½ UNIT**

Continues the study of advanced grammar and language. Promotes knowledge and understanding of the Spanish speaking world through its language, geography, civilization, culture and literature. Prerequisite: successful completion of SPN 032 or instructor permission.

## ART

### **ART 011**

**ART 1A. (CP) - CR. ½ UNIT**

Introduces two dimensional art with an emphasis on basic design theory. Composition, color theory artistic techniques, computer basics and perspective will be covered. No prerequisite. Course is offered Fall and Spring semester.

### **ART 012**

**ART 1B. - (CP) - CR. ½ UNIT**

Continues ART 011. Perspective, lettering, color theory, and 3-D design will be covered. Various subjects, both natural and man-made, will be drawn and painted. Prerequisite ART 011 or permission of instructor. Spring semester.

## MUSIC

Performing/Activity music classes (1/4 credit) are now numbered from 011, 012, 021 etc. through 041, 042 with a suffix to show type of class as follows:

### **MUS 011B**

**042B - BAND. (CP) - CR. ¼ UNIT PER SEMESTER**

Designed to provide a marching and concert band performance experience. The marching band aspect begins in August and continues until the football season is completed. Emphasis on performance in a concert setting begins in November and continues through the remainder of the academic year. Admission is gained through audition or invitation of the Band Master.

### **MUS 011J-042J**

**JAZZ BAND. CR. ¼ UNIT PER SEMESTER**

Affords opportunities to all qualified students who are interested in jazz, popular, and "big band" music. Admission is gained by audition or invitation of the Band Master.

### **MUS 011S – 042S**

**CONCERT CHOIR. - (CP) - CR. ¼ UNIT PER SEMESTER**

Affords opportunities to all students who are interested in singing and performing vocal music of numerous periods and styles. Admission is gained by audition or invitation of the choral director.

**MUS 011C-042C**  
**CHAPEL CHOIR. CATHOLIC**

**MUS 011P- 042P**  
**CHAPEL CHOIR. PROTESTANT**  
**CR. ¼ UNIT PER SEMESTER**

Affords opportunities to all students who are interested in singing and performing sacred music. Admission is gained by audition or invitation of the choral director.

**MUS 011L-042L**  
**APPLIED MUSIC LESSONS. CR. ¼ UNIT PER SEMESTER**

Provides private music instruction on piano, voice, and various instruments. Prerequisite: Permission of instructor.

**MUS 011V-042V**  
**VOCAL ENSEMBLE CR. ¼ UNIT PER SEMESTER**

Provides opportunities for those students who are interested in small vocal ensemble participation and its related genres (jazz, popular, madrigal, barbershop, etc.). Admission is gained by audition or invitation of the Choral director.

**MUS 031**  
**INTRODUCTION TO MUSIC. (CP) CR. ½ UNIT PER SEMESTER**

Offers high school students an opportunity to explore the basic elements of music, composers, literature, and vocal and instrumental music from antiquity to the present day. A background in music is not a prerequisite for this course as it will be directed toward the non-musician.

**HUMANITIES HONORS (H)**  
**COURSES**

Courses designated (H) in the listing above are high school Honors courses. In addition, some, but not all, humanities college courses may be designated as Honors when taken by NMMI high school cadets for high school credit. A listing of these courses is available upon request.

**DIVISION OF**  
**NATURAL SCIENCES AND**  
**MATHEMATICS**

**BIOLOGY**

**BIO 021-022**  
**BIOLOGY. (CP) - CR. ½ -½ UNIT**

Surveys the five kingdoms of organisms, with emphasis on human biology. Molecular biology, nature of scientific data, and bio-terminology are emphasized. Laboratory work includes the metric system, compound microscope, plant and animal dissections, and teacher demonstrations. Lab fee required.

**PHYSICS**

**PHY 031-032**  
**PHYSICS.(CP) CR. ½ -½ UNIT**

Introduces the fundamental physical concepts of time, space, and matter, the development of the wave nature of light, the study of the dynamics of motion and electricity in a year sequence course. Includes demonstrations and outside reference readings.

Lab fee required. Prerequisite: MTH 033-034. Concurrent enrollment in MTH 043-044, 047-048 or 061-062 recommended. Must pass PHY 031 to enroll in PHY 032.

### EARTH SCIENCE

#### **ESC 031-032**

**EARTH SCIENCE.(CP) Cr. ½ -½ UNIT**

Involves a study of physical processes of the earth and universe in a year's course. The Fall semester is a survey of astronomy, meteorology, and oceanography. The Spring semester is a survey of geology with extensive laboratory work in geologic processes. Lab fee required.

### CHEMISTRY

**CHM 031-032 - CHEMISTRY. (CP) Cr. ½ -½ UNIT**

Helps the student see how chemical principles are developed from experimental observations and data. Concepts are first introduced in simplest terms and slowly developed until the student can deal with their quantitative aspects. Because of its scope and in-depth development of concepts, this course is a year sequence course. Lab fee required. Prerequisite: MTH 021-022 with a minimum grade of "C." Must pass CHM 031 to enroll in CHM 032.

### SCIENCE OF DESIGN

#### **SCI 031-032**

**SCIENCE OF DESIGN. (CP) Cr. ½ - ½ UNIT**

Introduces a study of the application of engineering design to real world problems/situations. Lab work consists of computer simulations and computer designed projects. Curriculum is developed by the Infinity Project, a consortium of engineering schools headed by Southern Methodist University, the National Science Foundation, and the Department of Education. Lab fee required.

### MATHEMATICS

*NOTE: Prospective NMMI graduates must successfully pass one year of NMMI mathematics at the Algebra 2 level or above.*

#### **MTH 015-016**

**PRE-ALGEBRA A AND B. Cr. ½ - ½ UNIT**

Covers operations on whole numbers, decimals, fractions, signed numbers, percents, ratios, word-problems, perimeter, area, volume, algebraic phrases, exponentials, algebraic equations. For elective credit only. Must pass MTH 015 to enroll in MTH 016.

#### **MTH 017**

**ALGEBRA 1/2 Cr. ½ UNIT**

Covers in an accelerated course of one semester the topics from MTH 015-016. Students who have completed MTH 016 should not enroll in this course. For elective credit only.

**MTH 021-022****ALGEBRA IA AND IB. (CP) Cr. ½ -½ UNIT**

Covers letters representing quantities, positive and negative numbers, percentages, word problems, polynomials, rational expressions, factoring, equations, lines, graphing, functions, radical and exponential forms, scientific notation, and the quadratic function.

**MTH 033-034****ALGEBRA IIA AND IIB.(CP) Cr. ½ -½ UNIT**

Reviews first-year algebra. Extends to numerical and literal equations, area, volume, surface area, uniform motion, complex numbers, similar triangles, right triangle trigonometry, applications to science-related problems, variation, graphs. Emphasizes systems of problem solving, concepts, and appropriate skills. Prerequisite: Successful completion of MTH 021-022. Must pass MTH 033 to enroll in MTH 034.

**MTH 037-038****GEOMETRY A AND B. (CP) Cr. ½ -½ UNIT**

Covers geometric forms and patterns in “real life” applications. Extends to observations for inductive reasoning and proofs. Geometric constructions and applications of geometry are introduced prior to proving the mathematics of geometry. This study of geometric building blocks includes area, volume, similarity, the Pythagorean Theorem and logic, with practical applications. Prerequisite: MTH 021-022.

**MTH 042****TRIGONOMETRY (CP) – Cr ½ UNIT**

Considers functions of acute angles, logarithms, solutions of right triangles, graphing of functions, identi-

ties, general triangles, applications of trigonometry to algebra. Stresses applied problems. Prerequisite: MTH 033-034.

**MTH 043-044****GEOMETRY-TRIGONOMETRY-ALGEBRA III A AND B. (H) Cr. ½ -½ UNIT**

Continues the development in Algebra I and II. Normal geometric concepts are studied, including column and paragraph proofs. Logarithms are covered extensively with emphasis on the algebra of logarithms. Emphasizes all phases of trigonometry including trigonometric equations, identities, and graphs. Other topics include matrices, determinants, arithmetic and geometric progressions, conic sections, roots of polynomial equations, and curve sketching. Prerequisite: MTH 033-034.

**MTH 047-048****PRE-CALCULUS A/B (H) Cr. ½ - ½ UNIT**

Provides a mathematical background necessary for calculus as a fourth year mathematics course for students with two years of algebra and a year of geometry. Covers advanced topics in mathematics to include algebra, functions, trigonometry, matrices and conic sections. Prerequisite: MTH 033-034, MTH 037-038 or MTH 043-044

**MTH 061****CALCULUS A. (H) Cr. ½ UNIT**

Reviews basic algebra, algebraic functions, trigonometric functions, and graphs. Covers limits, derivatives of algebraic and trigonometric functions, related rates, optimization, curve sketching. Prerequisite: MTH 043-044 or MTH 047-048

**MTH 062****CALCULUS B. (H) CR. ½ UNIT**

Covers antiderivatives, the definite and indefinite integral and applications of integration that include volumes of revolution, arc length, and surface area. Also covered are logarithms and exponential functions, inverse trigonometric functions, hyperbolic functions, techniques of integration, infinite series, power and Taylor series. Prerequisite: Minimum grade of "C" in MTH 061.

**MEN 051****TECHNICAL DRAWING. (CP) CR. ½ UNIT**

Introduces basic engineering graphical principles and applications. Topics include technical drawing and design, geometrical construction, drawing conventions, free hand sketching, orthographic projection, and descriptive geometry. The student is required to learn AUTOCAD. Does not meet mathematics requirements. Lab fee required. Prerequisite: MTH 037-038 and CIS017.

**MATH/SCIENCE HONORS (H)  
COURSES**

Courses designated (H) in the listing above are high school Honors courses. In addition, some, but not all, math/science college courses may be designated as Honors when taken by NMMI high school cadets for high school credit. A listing of these courses is available upon request.

*NOTE: Prospective NMMI graduates must successfully pass one year of NMMI mathematics at the Algebra 2 level or above.*

**DIVISION OF  
SOCIAL SCIENCE,  
BUSINESS ADMINISTRATION  
AND SECURITY STUDIES**

**SOCIAL SCIENCE**

**HISTORY**

**HIS 011-012****WORLD HISTORY/GEOGRAPHY (CP) CR. ½ -½ UNIT**

Surveys the economic, social, and political events and trends from ancient times to the seventeenth century. Second semester, seventeenth century to the present time.

**HIS 021-022****UNITED STATES HISTORY. (CP) CR. ½ -½ UNIT**

Surveys in depth the political, economic, social, and cultural development of the United States and its role in world affairs from the colonial era to 1865. Second semester, the course surveys United States history from the beginning to Reconstruction to the present.

**HIS 031****HISTORY OF THE SOUTHWEST.(CP) CR. ½ UNIT**

Surveys the political, economic, social and cultural development of the Southwestern states to include Texas, New Mexico, Arizona, California, Colorado and Utah.

**GVT 031****AMERICAN GOVERNMENT.(CP) Cr. ½ UNIT**

Introduces fundamental concepts of American government, political ideals and questions of current interest. Develops understanding to promote participation.

**PSY 041****PSYCHOLOGY.(CP) Cr. ½ UNIT**

Studies motivation and behavior patterns and the complex influences in our culture. Designed to encourage a scientific examination of human nature.

**SOC 041****SOCIOLOGY. (H) Cr. ½ UNIT**

Studies the structure and nature of contemporary American society, explains the behavior of humans as group members and includes a familiarization with society's technology, ideology, and social control system.

**COM 091****CURRENT EVENTS I (CP) Cr. ½ UNIT**

Provides an opportunity to develop or improve written and communicative skills through the examination of current issues, movements and influential people. Emphasis placed on research, writing, vocabulary, individual presentations and group discussions. Freshmen and Sophomores only. May not be repeated.

**COM 092****CURRENT EVENTS II (CP) Cr. ½ UNIT**

Provides an opportunity to develop or improve written and communicative skills through the examination of current issues, movements and influential people. Emphasis placed on research,

writing vocabulary, group presentations and discussions/debate. Juniors and Seniors only. Priority given to those without COM 091. COM 092 may be repeated with instructor and Associate Dean approval.

**BUSINESS ADMINISTRATION****BUS 035****GENERAL BUSINESS. (CP) Cr. ½ UNIT**

Provides a basic understanding of the functions of business organizations within our economic and social environment, specific emphasis upon the handling of one's personal business affairs, and an individual's relationship to the world of work. Limited to sophomores with freshmen on an individual basis.

**BUS 036****ADVANCED GENERAL BUSINESS (CP)**

– Cr. ½ UNIT

Provides a deep understanding of the functions of business organizations within a global economic and social environment. Specific emphasis upon business organizations, structure and decision-making processes. Explore career opportunities in the business world. Limited to juniors with seniors on an individual basis.

**BUS 041****TECHNICAL COMMUNICATION. (CP) Cr. ½ UNIT**

Introduces the theory and practice of business writing emphasizing style, structure, and format in letters, memoranda, resumes, and reports. Students successfully completing this course may not enroll in COM 041. Concurrent Enrollment with BUS 204.

## **BUS 042**

**BUSINESS LAW (CP) Cr. ½ UNIT.**

Investigates the basic principles of tort law and their application for business problems. Includes court systems, legal procedures, law of contracts, agency, employment, negotiable instruments, personal property and sale of goods. Limited to juniors with seniors on an individual basis.

## **CIS 015**

**COMPUTER CONCEPTS I (CP) Cr. ½ UNIT**

Introduces the keyboard and principle components of the word processing application on the microcomputer. Emphasis is on the development of typing using the touch typing method through typing letters, classroom assignments and term papers. It is a self-paced course and not for students who have received credits for a similar course. Lab fee required. Does not meet the computer science graduation requirements.

## **CIS 017**

**COMPUTER CONCEPTS II. (CP) Cr. ½ UNIT**

Studies the impact of computers on society, including the development of information processing and program development. Microcomputers are used for the teaching of various productivity applications such as word processing, database management, spreadsheets, desktop publishing and the Internet. Lab fee required.

## **ECN 051**

**ECONOMICS.(CP) Cr. ½ UNIT**

Introduces fundamental economic concepts and the study of the five main

divisions: consumption, production, exchange, distribution, and governmental functions. Limited to seniors.

## **SOCIAL SCIENCE/BUSINESS ADMINISTRATION HONORS (H) COURSES**

Courses designated (H) in the listing above are high school Honors courses. In addition, some, but not all, social science/business administration college courses may be designated as honors when taken by NMMI high school cadets for high school credit. A listing of these courses is available upon request.

## **DIVISION OF HEALTH, PHYSICAL EDUCATION AND RECREATION**

### **PHE 020**

**HEALTH AND FITNESS Cr. ¼ UNIT**

Addresses the development of a healthy life-style through physical fitness exercises and the study of such important topics as: decision making, First Aid, circulatory system, sense organs, personal hygiene, personality development, stress management, abuse and dependency, chemical substance abuse (alcohol drugs and tobacco), sexually transmitted diseases and other pertinent topics.

**PHE 001 - 099****HIGH SCHOOL PHYSICAL ACTIVITY. CR. ¼ UNIT EACH**

Introduces high school cadets to many individual sports with lifetime carry-over value.

No.	Course
007	Beginning Fitness
015	Lifetime Sports (pre-requisite course for sports activity courses)
023	Swimming
025	Dynamic Fitness
036	Strength and Conditioning
037	Golf
048	Tennis

**JUNIOR ROTC LEADERSHIP  
EDUCATION**

All high school cadets participate in the Junior ROTC program. Junior ROTC consists of leadership education courses 1 through 4 which coincide with the year the high school cadet enters the program and not the year the student is in high school.

Military training, offered through the Junior ROTC Program, is a cooperative effort contractually agreed to by the United States Army and NMMI as a means of providing high school cadets opportunities for leadership development in the interest of national security.

**LET 011-012****LEADERSHIP EDUCATION 1A/B.CR. ¼ - ¼ UNIT**

Consists of sub-courses in: Introduction to ROTC and the Army,

Introduction to Leadership Theory, Drill and Ceremonies, Hygiene and First Aid, Introduction to Maps and Map Reading, Introduction to Techniques of Oral Communications, Marksmanship and Safety, to include the New Mexico Hunter Safety Program, and Introduction to Leadership Development 2.

**LET 021-022****LEADERSHIP EDUCATION 2A/B. CR. ¼ - ¼ UNIT**

Consists of sub-courses in: Intermediate Leadership, Drill and Ceremonies, Intermediate First Aid, Intermediate Map Reading, Intermediate Techniques of Oral Communications, Intermediate Marksmanship and Safety. Also considered are the United States Army, People, Places, and Times, Service/ROTC Opportunities, the Role of the Army, and Introduction to Leadership Development 3.

**LET 031-032****LEADERSHIP EDUCATION 3A/B. CR. ¼ - ¼ UNIT**

Consists of sub-courses in: Development of the Army, Service Opportunities, Applied Marksmanship, Psychology of Leadership, Leadership and Small Unit Leaders' Problems, Seminar in Leadership and Management, Applied Methods of Instructions, Applied Map Reading, Leadership Development, and Drill, and Introduction to Leadership Development 4.



**LET 041-042**

**LEADERSHIP EDUCATION 4A/B.Cr. ¼**

**- ¼ UNIT**

Offers sub-courses in: Military Occupational Specialty (MOS) Study, Advanced Methods of Instruction, Staff Functions and Procedures, Army and Its Role in National Development, Review of Advanced Map Reading, and Leadership Development and Drill.

**DEPARTMENT OF  
ACADEMIC ADVISING AND  
COLLEGE PLACEMENT**

**ACT 011**

**ACT/SAT Review - Cr. ¼ hr**

Prepares students for the Scholastic Aptitude Test (SAT) or the American College Test (ACT). Program is designed to gain through practice experience with the testing approaches. Covers verbal areas of synonyms, antonyms, analogies, vocabulary, syntax, and grammar as well as reading in social sciences and natural science. Includes a complete series of problems in mathematics, including algebra and geometry. Course will replace a PE activity the one semester taken.



## FACULTY

### ISAAC ALEXIS

SFC, USA (2005)  
Central Texas College (AA),  
Military Instructor

### GILBERT ALVARADO

Lieutenant Colonel  
USA Ret. (1998) Criminal Justice,  
Department Chair Criminal  
Justice, M.S., Eastern New Mexico  
University

### MARY BETH ATWOOD

Lieutenant Colonel  
NMMI (1994) Biology, M.S., New  
Mexico State University

### PHILLIP BACA

Captain  
NMMI (2005) Business, M.S.,  
New Mexico State University 2004

### LEONA BACON

Major  
NMMI (2004), M.A. Library  
Science, University of Missouri

### JOSE BARRON

Captain  
NMMI (2001), Athletic Trainer,  
B.S. New Mexico State University

### FLOYD BELL

Sergeant First Class  
USA Ret. (1995), JROTC

### ELIZABETH L. BOESE

Major  
NMMI (1999), English, M.A.,  
Middlebury College

### WILL BOSTON

Captain  
NMMI (2002), Biology, M.S.,  
Texas Tech University Health  
Sciences Center

### JEFF BOYD

Major  
NMMI (2001) Department Chair  
Communications, M.A., Texas  
Tech University

### LEANNE V. BRATLAND

Lieutenant Colonel  
NMMI (1994) Spanish Language  
Department Chair, M.A., Eastern  
New Mexico University

### BRAD BRIMHALL

Major  
NMMI (2005), Associate Athletic  
Director for HPER and Human  
Performance, M.Ed., Utah State  
University

### J. DWIGHT BURNS

Lieutenant Colonel  
NMMI (1978) (1984) Assistant  
Athletic Director, Sports, B.S.,  
Angelo State University

### PAUL G. BURROW

Major  
NMMI (2005), Mathematics,  
M.Ed., Eastern New Mexico  
University

### JOHN CAMP

Colonel  
NMMI (1988) English, M.A.,  
Southern Methodist University

**PILAR CARRASCO**

Captain  
NMMI (2005) HPER Instructor,  
B.S., Eastern New Mexico  
University

**ROGER K. CASTILLO**

Captain  
NMMI (2005), Science &  
Mathematics, M.S.T., New Mexico  
Institute of Mining and  
Technology

**NANCY A. CAVIN**

Captain  
NMMI (2004), Mathematics &  
Computer Concepts, M.Ed.,  
Eastern New Mexico University

**CRESENCIO CORRAL**

Sergeant First Class  
USA Ret. (2005), JROTC  
Instructor

**MITCHEL L. COTTENOIR**

Captain  
NMMI (2005), Chemistry, M.S.,  
Texas Tech University

**MARIAN DES COGNETS**

Lieutenant Colonel  
NMMI (1992) History, M.A.,  
University of Maine

**SONIA S. COWEN**

Lieutenant Colonel  
NMMI (2003), Director Daniels  
Leadership Center, Ph.D., Gonzaga  
University

**JEFFRY E. CUNNINGHAM**

Lieutenant Colonel  
USA (2004), M.A. Chapman  
University, Professor of Military  
Science

**JOEL DYKSTRA**

Captain  
NMMI (2005) Arabic, Spanish,  
M.A., Michigan State University

**ERIC G. EVERTON**

Captain  
NMMI (2003), Manager YLCC  
Ropes Course, M.A., Western New  
Mexico University

**JOHN F. FARRELL**

Major  
USAF Ret., (2005) Character  
Development Officer, Ed.D.,  
University of Southern California

**REGINALD W. FRANKLIN**

Lieutenant Colonel  
NMMI (1991) Assistant Athletic  
Director External Affairs, B.S.,  
Southern Methodist University

**BILLY S. GALLAGHER**

Captain  
NMMI (2001) History, M.A.  
Eastern New Mexico University

**CLARE L. GALLOWAY**

Major  
NMMI (2000) Mathematics, M.A.,  
New Mexico State University,  
M.S., University of North Texas

**JERRY A. GARCIA**

Lieutenant Colonel  
NMMI (1978) Mathematics, M.S.,  
Eastern New Mexico University

**TERESA L. GARVEY**

Lieutenant Colonel  
NMMI (1989) Business  
Administration, Department Chair,  
M.B.A., Eastern New Mexico  
University

**SUSAN GLEN**

Major  
NMMI (1988) (2001) Computer  
Concepts, B.A., New Mexico  
Highlands University, M.Ed., West  
Texas A&M 2004

**MARK F. GONZALES**

Major  
USA Ret. (2005), Senior Army  
Instructor, BA, History, University  
of New Mexico

**MARIA CARMEN GONZALEZ**

Major  
NMMI (2005), MSW, New  
Mexico Highlands University

**GENE HARDMAN**

Major  
NMMI (1991), Assistant Athletic  
Director Internal Affairs, M.S.,  
University of Northern Colorado

**NANCY HEIN**

Major  
NMMI (2002), Biology, M.S.,  
University of Alaska, Anchorage

**MARLA HIGGINBOTHAM**

Colonel  
NMMI (1992) High School  
Advisor, M.S., Mankato State  
University

**W. THEODORE HITCHCOCK**

Lieutenant Colonel  
USAF Ret. (1993) History,  
Department Chair, Ph.D.,  
University of Mississippi

**HOLLY HUBER**

Major  
NMMI, (1998) Art, Department  
Chair, M.A.Ed., Eastern New  
Mexico University

**JAMES T. JESSUP**

Master Sergeant  
USA Ret., (2005), JROTC  
Instructor

**MELISSA JONES WITT**

Captain  
NMMI (2005), English, M.Ed.,  
Eastern New Mexico University

**CHARITY C. KELTER**

Captain  
NMMI (2005), Mathematics, M.S.,  
Texas Tech University

**SANDRA J. KENNEDY-LICON**

Lieutenant Colonel  
NMMI (1995) Spanish, M.A.,  
University of New Mexico

**RICHARD KITCHEN**

Major  
NMMI (2003) History and Social  
Science, Ph.D., Arizona State  
University

**JEROME J. KLOPFER**

Colonel  
NMMI (1984) Director, Learning  
Resource Center M.L.S.,  
University of Michigan

**KELLEY LEE**

Captain  
NMMI (2006), HPER Instructor,  
M.A., Eastern New Mexico  
University

**DIRK LEHMANN**

Lieutenant Colonel  
NMMI (1999) German, B.A.,  
Rheinische Friedrich Wilhelms  
Universitaet Bonn, M.A.,  
University of Missouri

**DARLENE L. LOGAN**

Colonel  
NMMI (1978) (1981). English.  
M.A., Texas Tech University

**DAVID LYNN**

Captain  
NMMI (2005), HPER Instructor,  
M.Ed., New Mexico State  
University

**JEFF LYNN**

Captain  
NMMI (2001) HPER Instructor,  
M.A., Eastern New Mexico  
University

**JOSH LYNN**

Captain  
NMMI (2005), HPER Instructor,  
M.A., Eastern New Mexico  
University

**CHERYL A. MARTINEZ**

Colonel  
NMMI (1986) Mathematics,  
M.S.T., New Mexico Institute of  
Mining and Technology

**JOHN R. MCVAY**

Lieutenant Colonel  
NMMI (2005), Biology, Ph.D.,  
Oklahoma State University

**DAVID A. MOELLER**

LTC USA (ret.) (2004)  
Western Illinois University (BS),  
Assistant Professor of Military  
Science

**DANIEL L. MUSGRAVE**

Chaplain, Major USA (ret) (1999)  
Philosophy and Chaplain M.Div.  
United Theological Seminary,  
M.A., Butler University.

**LYNN W. NEILL**

Lieutenant Colonel  
NMMI (1983), History and Social  
Science, Ed.S., University of New  
Mexico

**JAN OLESINSKI**

Captain  
NMMI (1988) HPER Instructor,  
M.A., Academy of P.E. Poland

**PARISH PALMER**

Major  
NMMI, (1998) Associate Dean  
Humanities , English M.Ed.,  
Northern Arizona University

**STANLEY S. PHIPPS**

Colonel  
NMMI (1983) Social Sciences,  
Ph.D., University of Idaho

**RHONDA REAGOR-JOHNSON**

Captain  
NMMI (1989-2000) (2001) High  
School Advisor, B.US., Eastern  
New Mexico University

**MICHAEL A. RYAN**

Colonel  
NMMI (1987) Mathematics, M.A.,  
Northern Arizona University

**CAROLYN SATTERLEE**

Lieutenant Colonel  
NMMI (1994) Director of Reading  
Programs, M.A., U.S. International  
University

**CHARITY SAVEDRA**

Captain  
NMMI (2001) HPER Instructor,  
B.A., Southern Methodist  
University

**SEAN SCHOOLEY**

Major  
NMMI (1987) HPER Instructor,  
B.A., McMurry University

**STEPHANIE SCHOOLEY**

Captain  
NMMI (2005), HPER Instructor,  
B.S., Eastern New Mexico  
University

**LINDA K. SCOTT**

Lieutenant Colonel  
NMMI (1999) English Ph.D.,  
University of Maine

**MARY E. SHEPARD**

Lieutenant Colonel  
NMMI (1989) Science Department  
Chair, Physical Sciences, M.A.,  
Indiana University

**LARRY C. SKOGEN**

Lieutenant Colonel  
USAF (ret) (2001), History and  
Philosophy, Ph.D., Arizona State  
University

**LESTER A. SMITH**

Colonel  
NMMI (1980) Associate Dean for  
Business Administration, Social  
Studies and Security Studies  
Associate Dean, M.B.A., New  
Mexico State University

**LEANDRO SOLIZ**

MSG, USA (2004)  
(AA), Military Instructor

**SUZANNE M. STEIL**

Colonel  
NMMI (1979), Service Academy  
Preparatory Advisor, M.Ed.,  
Eastern New Mexico University

**NATALIE STEWART-SMITH**

Lieutenant Colonel  
NMMI (1997) English M.Ed.,  
Edinboro University, M.A.,  
Washington State University

**JOHN C. SURGETT**

Captain  
NMMI (2004), Mathematics, B.S.  
M.E., University of New Mexico

**THOMAS TEKUT**

Major  
NMMI, (1998) Chemistry, Ph.D.,  
Texas Tech University

**STEVE THORP**

Lieutenant Colonel  
NMMI, (1997) Music, Department  
Chair, M.M., Eastern New Mexico  
University

**LEWIS TOLAND**

Colonel  
NMMI (1999) English, Ph.D.,  
University of Kansas

**IAN V. TUDLONG**

MAJ, USA (2004)  
 North Georgia College (BS),  
 Assistant Professor of Military  
 Science

**BETTY H. TUTTLE**

Major (2004)  
 High School Advisor, M.A.,  
 Western NM University, M.S.,  
 Northern Arizona University

**KENNETH G. TUTTLE**

Major (NMMI) (2003)  
 Bandmaster, Music, M.E., New  
 Mexico Highlands University

**JOHN K. UMBERGER**

Major, USA Ret. (2000)  
 Social Science, M.P.A., Golden  
 Gate University, M.A., Naval Post  
 Graduate School

**ELENA A. VILTCHINSKAIA**

Major  
 NMMI (2002) Chemistry, Ph.D.,  
 Ural Polytechnic Institute

**TERRY D. WAGGONER**

Major  
 NMMI (1984) (2001) Social  
 Science, Ed.M., Boston University

**GREGORY WASSIL**

Colonel  
 NMMI (1999) English Ph.D., City  
 University of New York

**RICKY WHEELER**

MSG, USA (2005)  
 Central Texas College (AA),  
 Senior Military Instructor

**ROBERT E. WILLIS, JR.**

Colonel  
 NMMI (1991) Physics, Ph.D.,  
 Duke University

**JAMES T. JESSUP**

Master Sergeant  
 USA Ret. (2005), JROTC  
 Instructor

**DAVID M. YOMES**

SFC, USA (2005)  
 Pierce College (Associates of Arts  
 and Science) Military Instructor

**MARTIN ZELLER**

Major  
 NMMI (1999) HPER Instructor,  
 B.S., Baylor University

**CADET COUNSELORS****DAVIS FEATHERSTONE**

Major  
 NMMI (1986-1991) (1993-1995)  
 (1999) Licensed Counselor,  
 Certificate. Institute for Reality  
 Therapy

**DANIEL L. MUSGRAVE**

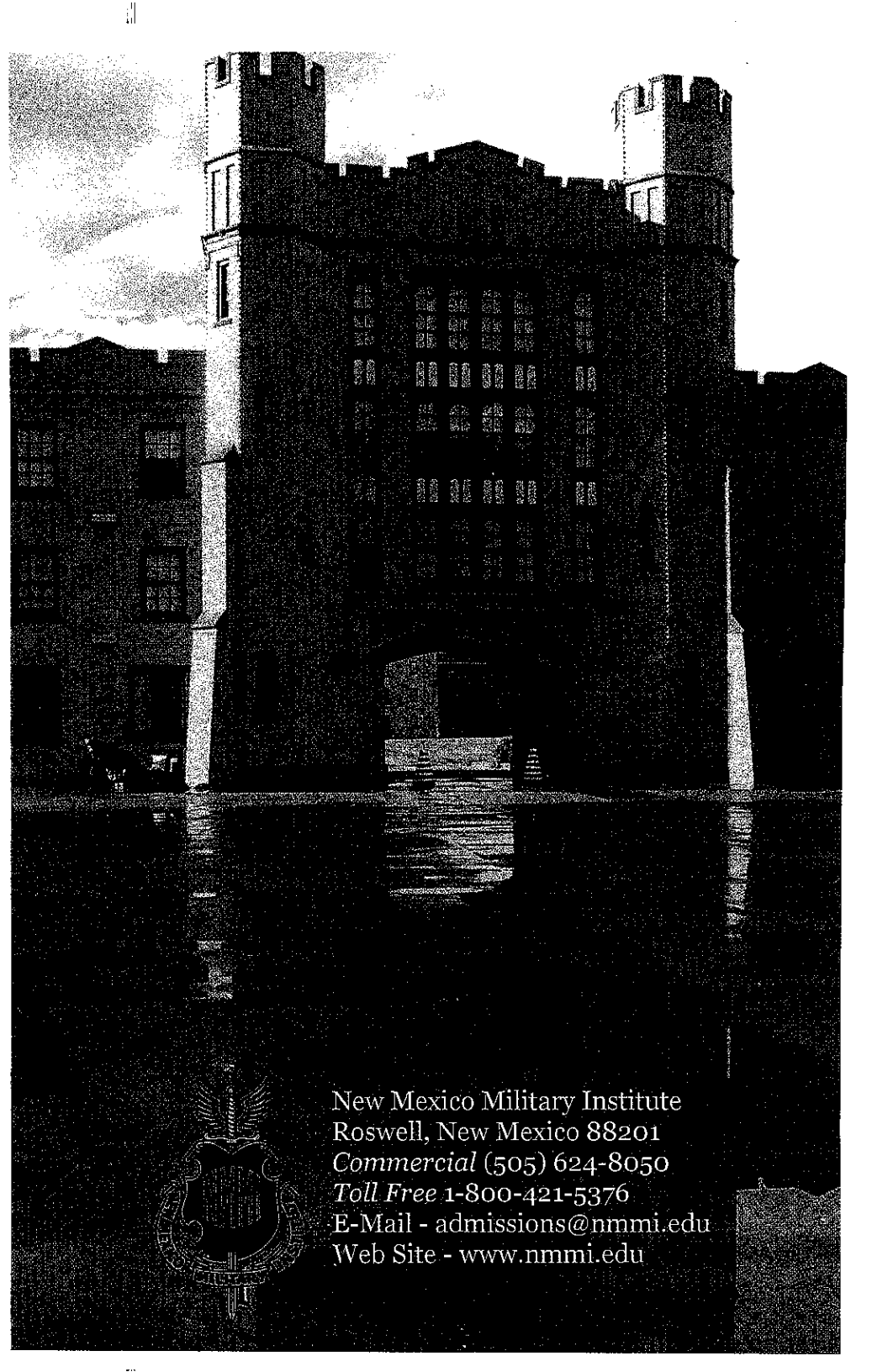
Chaplain, Major, USA Ret (1999)  
 Counselor, M.Div., United  
 Theological Seminary, M.A.,  
 Butler University

## INDEX

- ACADEMIC ACHIEVEMENT, 25
- Academic MISSION, 9
- Academic Outcomes, 15
- ADMISSION, 35
- Alumni Chapel, 43
- Assessment Statement, 16
- Associate in Arts, 50
- Associate in Science, 52
- Biology, 72
- Business Administration, 84
- Change summary, 2
- Chemistry, 74
- Class Designations, 19
- COLLEGE COURSES, 62
- College Distance Learning Courses, 57
- Communications, 65
- Criminal Justice, 86
- DROP-ADD, 22
- English, 62
- EQUAL OPPORTUNITY, 10
- Facilities, 42
- Faculty, 126
- FINANCIAL, 32
- FINANCIAL ASSISTANCE, 38
- Geography, 83
- Geology, 75
- Grades, 22
- GRADUATION, 24
- High School, 103
- GRADUATION REQUIREMENTS, 50
- High School, 101
- HIGH SCHOOL COURSES, 110
- Historical Sketch, 14
- History, 79
- HONOR SYSTEM, 19
- HPER, 88
- HUMANITIES, 62
- Courses, 67
- Key Personnel, 12
- Mathematics, 76
- MODERN LANGUAGES, 66
- New Mexico General Education Transfers, 48
- Night Study Hall, 22
- NMMI Degree
- College Degree, 55
- OFFICERS, 12
- Physics, 74
- Political Science, 81
- Psychology, 81
- Residency, 23
- Resources, 29
- ROTC PROGRAM, 92
- SCHOLARSHIPS, 39
- School Calendars, 10
- Services, 20
- Sociology, 82
- Toles Learning Center, 29
- Transcripts, 21
- TRANSFER
- High School credits, 101
- US Academy Preparation, 26
- VA, 41



## NOTES



New Mexico Military Institute  
Roswell, New Mexico 88201  
*Commercial* (505) 624-8050  
*Toll Free* 1-800-421-5376  
E-Mail - [admissions@nmmi.edu](mailto:admissions@nmmi.edu)  
Web Site - [www.nmmi.edu](http://www.nmmi.edu)